

HIGH FREQUENCY, LEADED, WASHABLE INDUSTRIAL GRADE CERAMIC RESONATORS HWZT Series

FEATURES:

- Industrial grade.
- High stability washable type.
- Small size, light weight
- Excellent environmental resistance.

APPLICATIONS:

- Remote control systems in vehicles.
- Telephones.
- Industrial electric appliances.
- Clock oscillation for microcontrollers.
- Household electric appliances.

STANDARD SPECIFICATIONS

Series	Frequency Range (MHz)	Frequency Tolerance (% at 25°C)	Stability (% at -40°C to 125°C)	Aging (10 yrs)	Total
HWZTX.XXM	2.00 ~ 6.00	±0.5% (see options)	±0.3% (see options)	±0.3% (see options)	±1.0%
HWZTX.XXM	6.01 ~ 8.00	±0.5% (see options)	±0.7% (see options)	±0.3% (see options)	±1.5%
HWZTX.XXM	8.01 ~ 13.49	±0.5% (see options)	±0.9% (see options)	±0.5% (see options)	±1.9%
HWZTX.XXM	13.50 ~ 50.00	±0.5% (see options)	±0.3% (see options)	±0.2% (see options)	±1.0%

Operating temperature: -40°C to 125°C

Storage temperature: -40°C to 125°C

(*) Stability vs. temperature: ±0.3% @ -20°C to +80°C

Packaging: Bulk: Plastic packing 500pcs.

Ammo pack (Taping): carton box packing: 1,500pcs.

We perform IC characterization to match your application.

Environmental and mechanical specification, Group 5A.

ORDERING OPTIONS

HWZT - Frequency - CXX - I0XX - S0XX - A0XX - Packaging

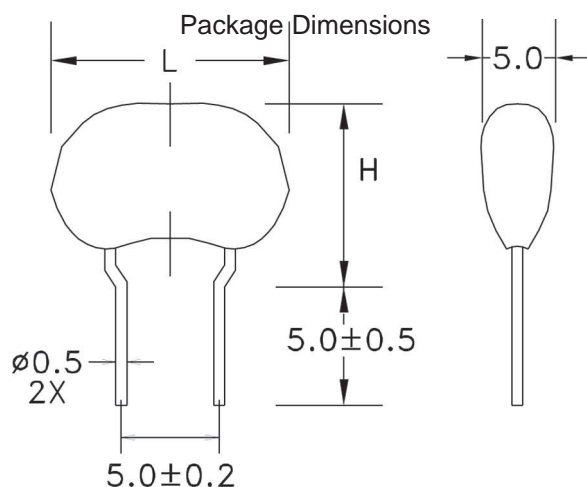
XX Cap Value

0XX: % Freq. Stability (**)

- Ammo (Ammo pack)

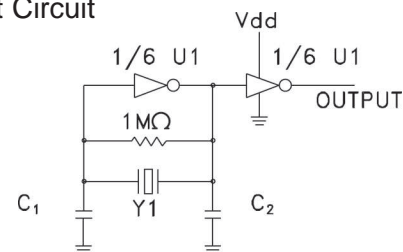
0XX: % Freq. Tolerance (**)

0XX: % Aging (**)



Dimensions: mm

Test Circuit



U1: CD4069UB
74HC04 (>8MHz)

Y1: RESONATOR

C₁ C₂: 30pF ± 20%

Freq. (MHz)	L (max.)	H (max.)
2.00 ~ 6.00	10.0	8.0
6.01 ~ 8.00	10.0	8.0
8.01 ~ 13.49	10.0	10.0
13.50 ~ 50.00	10.0	10.0

ex: HWZT - 2.44MHz - C05 - I015 - S03 - A01T

C₁ = C₂ = 5pF
±0.15% of tolerance
±0.3% of stability
±0.1% of aging



NOTE: Left blank if standard • All specifications and markings subject to change without notice

29 Journey • Aliso Viejo, CA 92656
(949) 448-7070 • Fax: (949) 448-8484

E-MAIL: abinfo@abracon.com • INTERNET ADDRESS: www.abracon.com

ABRACON IS
ISO 9001 / QS 9000
CERTIFIED