



## FEATURES

- Thermal Protection – Automatic Reset
- Remote Sense
- Remote ON/OFF
- Current Sharing
- Switching Frequency Synchronization
- Parallel Operation
- Series Operation
- Compact Footprint/Low Profile

## SPECIFICATIONS

### INPUT

Voltage Range See Model Selection Table

### OUTPUT

Output Voltage See Model Selection Table

Output Voltage Adjustment ± 10% – See Engineering Data for details

### Regulation

Total ± 5% max.

Set Point ± 3% max.

	<b>2V</b>	<b>5V</b>	<b>9V</b>	<b>12V</b>	<b>15V</b>	<b>24V</b>	
Regulation							
Line (typ.)		2 mV	2 mV	4 mV	4 mV	6 mV	8 mV
Load (typ.)		8 mV	8 mV	15 mV	15 mV	20 mV	25 mV
Temp Drift (typ.)		30 mV	30 mV	60 mV	60 mV	90 mV	120 mV
Noise & Ripple (peak-to-peak)		200 mV	200 mV	300 mV	300 mV	350 mV	400 mV
Overvoltage Protection (max.)		5V	7V	12.2V	15.5V	20V	32V

Output Current See Model Selection Table

Dielectric Strength 500 VDC for one minute

Insulation Resistance >100 MΩ (@ 500 VDC)

## ENVIRONMENTAL

Operating Ambient Temp. –10 to +80°C.  
(see Engineering Data for derating)

Storage Temp. –25 to +85°C

Cooling Convection; See Engineering Data for details.

## MECHANICAL

Shock 20G max., any side

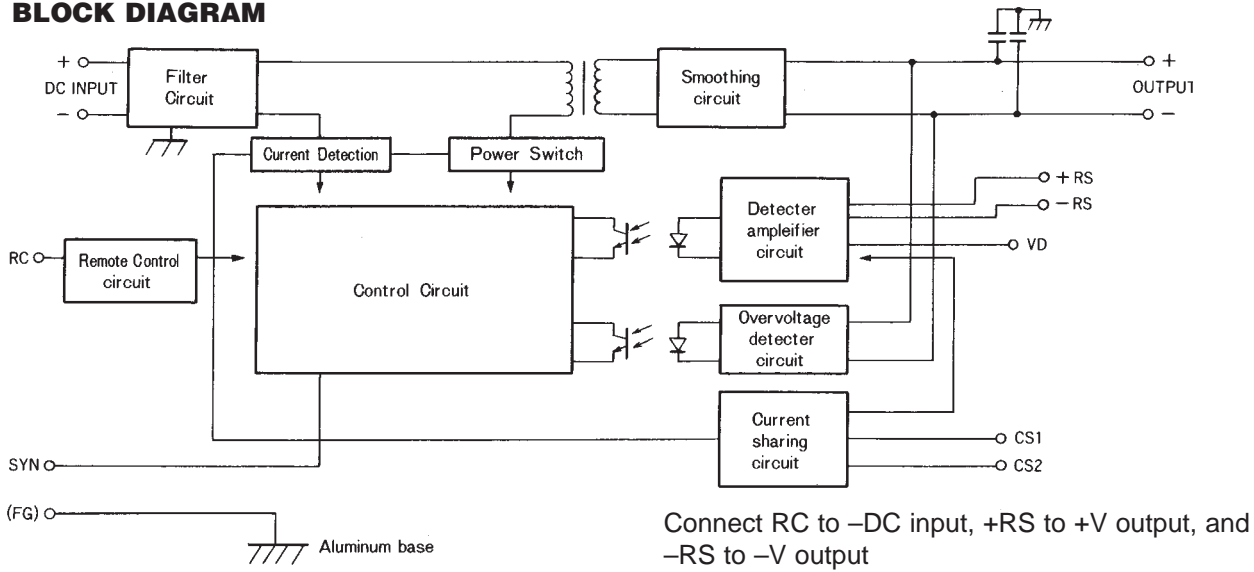
Vibration Amplitude 1.5 mm, 10 - 55 Hz scan in 1 minute;  
X, Y, Z direction for 2 hours each  
(non-operating).

Optional heatsinks are available – please consult factory

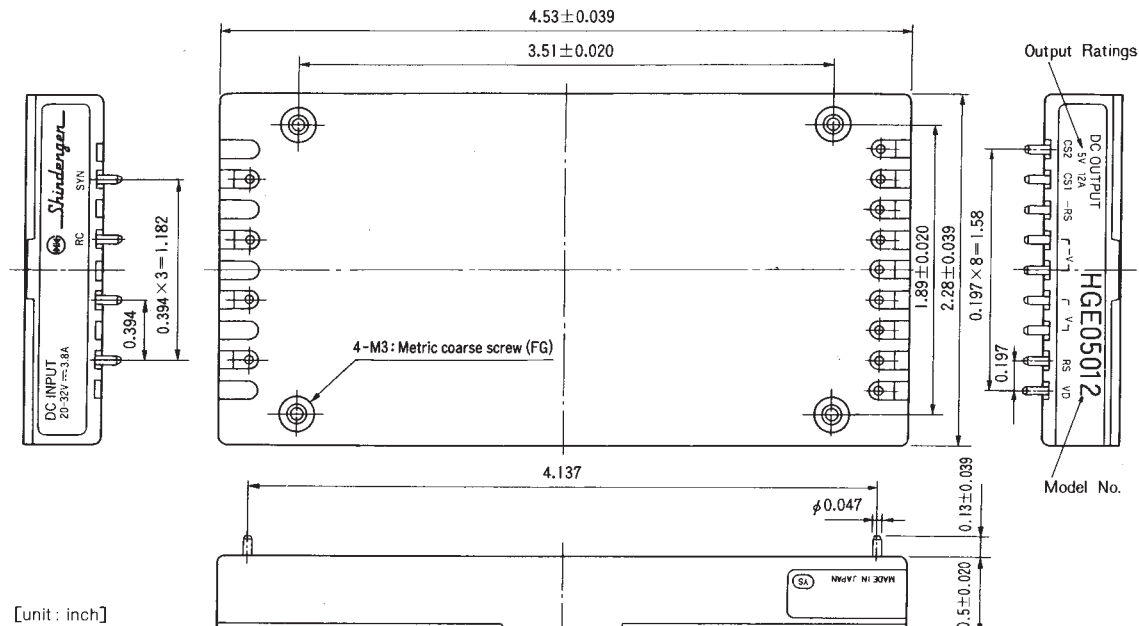
## MODEL SPECIFICATIONS

Output		24 (20-32)VDC		48 (40-60)VDC	
Volts	Amps	Model	Efficiency	Model	Efficiency
2	0-15.0	HGE02015	69%	HGG02015	69%
5	0-12.0	HGE05012	80%	HGG05012	82%
9	0-6.6	–	–	HGG096R6	83%
12	0-5.0	HGE12010	81%	HGG12005	83%
15	0-4.0	–	–	HGG15004	84%
24	0-2.5	HGE242R5	83%	HGG242R5	84%

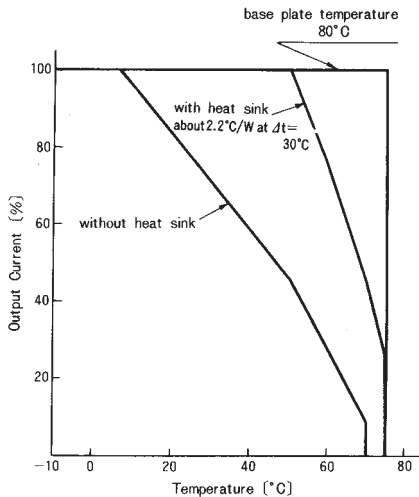
## BLOCK DIAGRAM



## EXTERNAL DIAGRAM

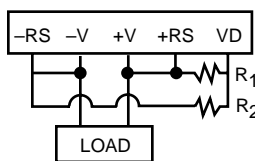


## DERATING CHART

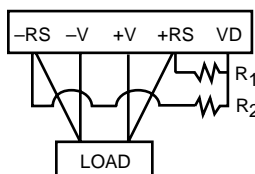


## VOLTAGE ADJUSTMENT

w/o remote sensing



w/ remote sensing



Connect either R1 to lower output voltage, or R2 to raise output voltage

## MECHANICAL SPECIFICATIONS

Size (W x D x H) 4.53 x 2.28 x 0.5 inches  
(115 x 58 x 12.7 mm)  
Weight 2.4 oz (67 g)

Dimensions in inches; ( ) Dimensions in mm.