

HT Series

**High Performance
RFI Power Line Filters
for Medical Equipment**



**UL Recognized
CSA Certified
VDE Approved**

HT Series

HT series power line filters provide superior common-mode and premium differential-mode attenuation to RFI noise on the frequency range from 10kHz to 30MHz, for IEC601 and UL544 patient-connected equipment, as well as all other electronic equipment that cannot tolerate any leakage current.

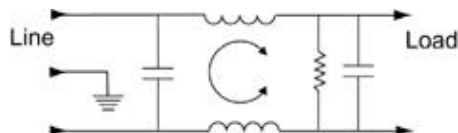
They are a size- and cost-effective solution to the problem of meeting both medical leakage current limits and conducted emissions limits in equipment with high noise sources (such as switching power supplies). HT series filters can ensure compliance to the following Conducted Emissions standards:

- German FTZ Decree #243/1991, Quasi-peak and Averaging limits.
- European Normalized Standards based on EN55022, Level A (in many cases, Level B also).
- FCC Part 15, Computing Devices, Class B.
- FCC Part 18, ISMEquipment, Industrial and Consumer.

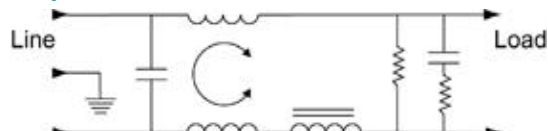
They also provide premium susceptibility protection to medical equipment, permitting error-free operation in noisy environments and enabling compliance to IEC801-6 and the FDA guidelines.

Electrical Schematics

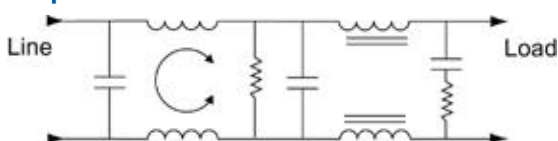
6 Amp



10 Amp



15 Amp



Resistor location for reference only.

corcom



Specifications

Maximum leakage current, each
line-to-ground @ 120 VAC 60 Hz: 2μA
@ 250 VAC 50 Hz: 5μA

Hipot rating (one minute):
line-to-ground 1500 VAC
line-to-line 1450 VDC

Operating frequency: 50/60 Hz

Rated voltage: 120/250 VAC

Rated current:	@120 VAC	@ 250 VAC
6EHT	6A	5A
10EHT	10A	8A
15EHT	15A	12A

Minimum insertion loss in dB:

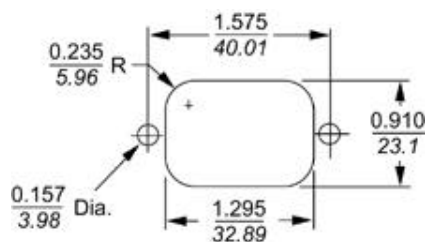
Line-to-ground in 50 ohm circuit

Current Rating	Frequency MHz											
	.01	.02	.05	.08	.15	.5	1	2	5	10	20	30
6A	16	23	32	41	46	41	33	26	15	9	6	2
10A	9	15	24	30	36	42	34	22	11	12	8	8
15A	4	9	18	22	27	41	34	22	12	15	5	2

Line-to-line in 50 ohm circuit

Current Rating	Frequency MHz											
	.01	.02	.05	.08	.15	.5	1	2	5	10	20	30
6A	4	1	14	45	51	70	70	65	55	47	37	37
10A	7	8	17	32	52	70	70	70	65	55	40	35
15A	12	16	15	10	51	70	70	70	70	70	65	55

Recommended Panel Cutout (HT7 & HT7M)



Panel Cutout (Back Mount)

Line Cord

Line Cord No. GA400

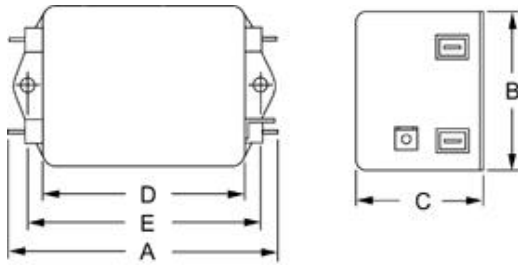
7 1/2 foot, 3-conductor line cord to mate with T7 models

Libertyville, IL (847) 680-7400

Case Styles

Metric shown in italics.

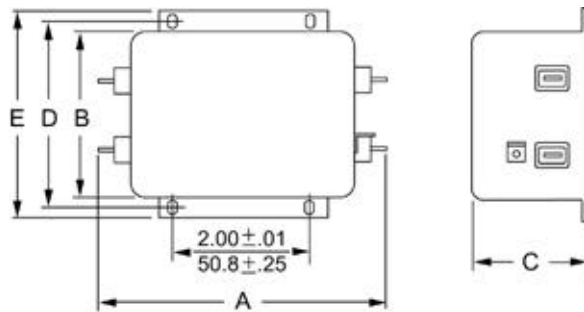
6EHT1 & 10EHT



Typical dimensions

Terminals: $\frac{.250}{6.35}$ (5) Holes: $\frac{.07}{1.8}$ Dia.(4) Slot: $\frac{.07 \times .16}{1.8 \times 4.1}$ Mounting holes: $\frac{.188}{4.78}$ Dia.(2)

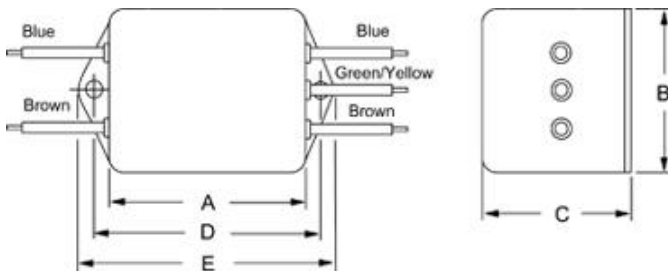
15EHT



Typical dimensions

Terminals: $\frac{.250}{6.35}$ (5) Holes: $\frac{.07}{1.8}$ Dia.(4) Slot: $\frac{.07 \times .16}{1.8 \times 4.1}$

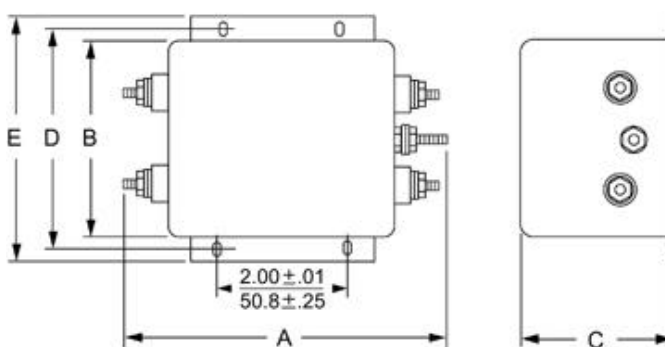
HT3



Typical dimensions

Wire leads: $\frac{4.0}{101.6}$ Min. Mounting holes: $\frac{.188}{4.78}$ Dia(2)

HT6



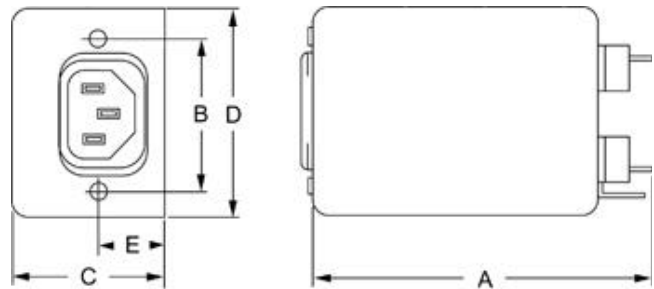
Typical dimensions

Terminals: No. 8-32 (5) Mounting slots: $\frac{.203 \times .156}{5.16 \times 3.96}$ (4) Torque 18±2 in. lb.

Case Styles

Metric shown in italics.

HT7 & HT7M



Tapped insert

No. 6-32 x 1-4 (2) - T7

No. M-3 x .5 (2) - T7M

Case Dimensions

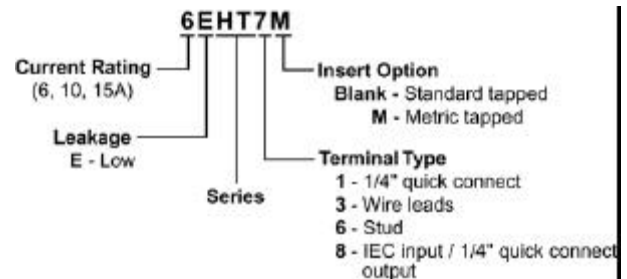
Metric shown in italics.

Part No.	A (max)	B (max)	C (max)	D $\pm .015$ $\pm .38$	E (max)
6EHT1	$\frac{3.56}{90.4}$	$\frac{2.15}{54.6}$	$\frac{1.81}{46.0}$	$\frac{2.938}{74.63}$	$\frac{3.38}{85.9}$
6EHT3	$\frac{2.55}{64.8}$	$\frac{2.15}{54.6}$	$\frac{1.81}{46.0}$	$\frac{2.938}{74.63}$	$\frac{3.38}{85.9}^{\dagger}$
6EHT7, 6EHT7M	$\frac{3.52}{89.4}$	$\frac{2.25}{57.2}$	$\frac{1.78}{45.2}$	$\frac{1.575}{40.01}$	$\frac{0.63}{16.0}$
10EHT1	$\frac{4.69}{119.1}$	$\frac{2.27}{57.7}$	$\frac{1.8}{45.7}$	$\frac{4.063}{103.2}$	$\frac{4.47}{113.5}$
10EHT3	$\frac{3.69}{93.7}$	$\frac{2.27}{57.7}$	$\frac{1.8}{45.7}$	$\frac{4.063}{103.2}$	$\frac{4.47}{113.5}$
15EHT1	$\frac{5.45}{138.4}$	$\frac{3.12}{79.2}$	$\frac{2.18}{55.4}$	$\frac{3.5}{88.9}$	$\frac{3.96}{100.6}$
15EHT6	$\frac{5.95}{151.1}$	$\frac{3.12}{79.2}$	$\frac{2.18}{55.4}$	$\frac{3.5}{88.9}$	$\frac{3.96}{100.6}$

$\dagger \pm .02$
 $\pm .5$

Ordering Information

Consult your local Corcom sales representative for pricing.



Available Part Numbers

6EHT1	10EHT1
6EHT3	10EHT3
6EHT7	15EHT1
6EHT7M	15EHT6