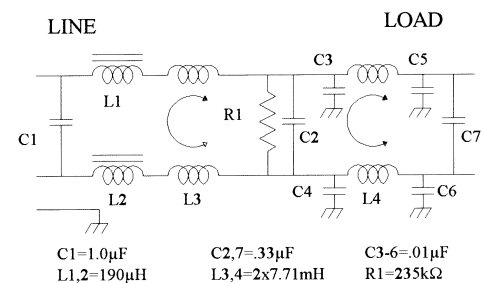


Model HH-1199-6, 250 VAC, 6A EMI Filter



The HH-1199-6 filter has been designed especially for the UniVerter™ Series of AC-DC converters with Power Factor Correction. This filter works well to meet the new European EN55022 emissions specification or for systems required to meet the FCC conducted emissions standards.

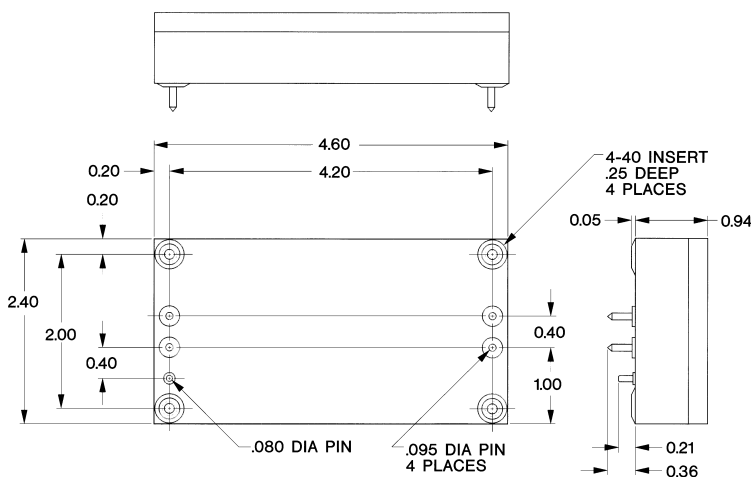
CIRCUIT DIAGRAM



SPECIFICATIONS

Operating Voltage	125 / 250 VAC
Operating Current (max)	6.0 A
Frequency	50 / 60 Hz
Temperature Range (storage)	-40 to 85°C
Temperature Range (operating)	-20 to 50°C
Diel. Withstanding Voltage (ph-case)	1500 VAC
Diel. Withstanding Voltage (ph-ph)	1500 VDC
Leakage Current at 250 VAC, 60 Hz	2.5 mA max
Discharge Voltage After 60 Seconds	34 V max

OUTLINE DIAGRAM



INSERTION LOSS

