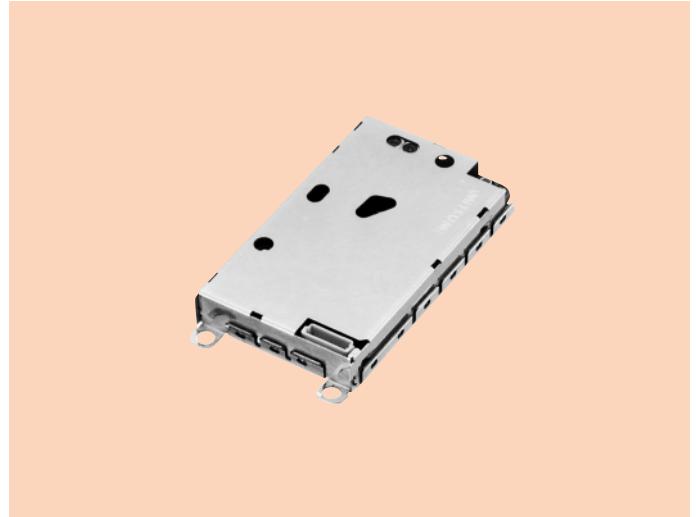


12 Channel GPS Receiver Unit GPS-C5005

Telecommunication component

OUTLINE

The GPS-C5005 is a GPS receiver unit developed for car navigation units and portable terminals and is compact and light weight with low current consumption. High accuracy and speed positioning are achieved with 12 channels (multi-channel)



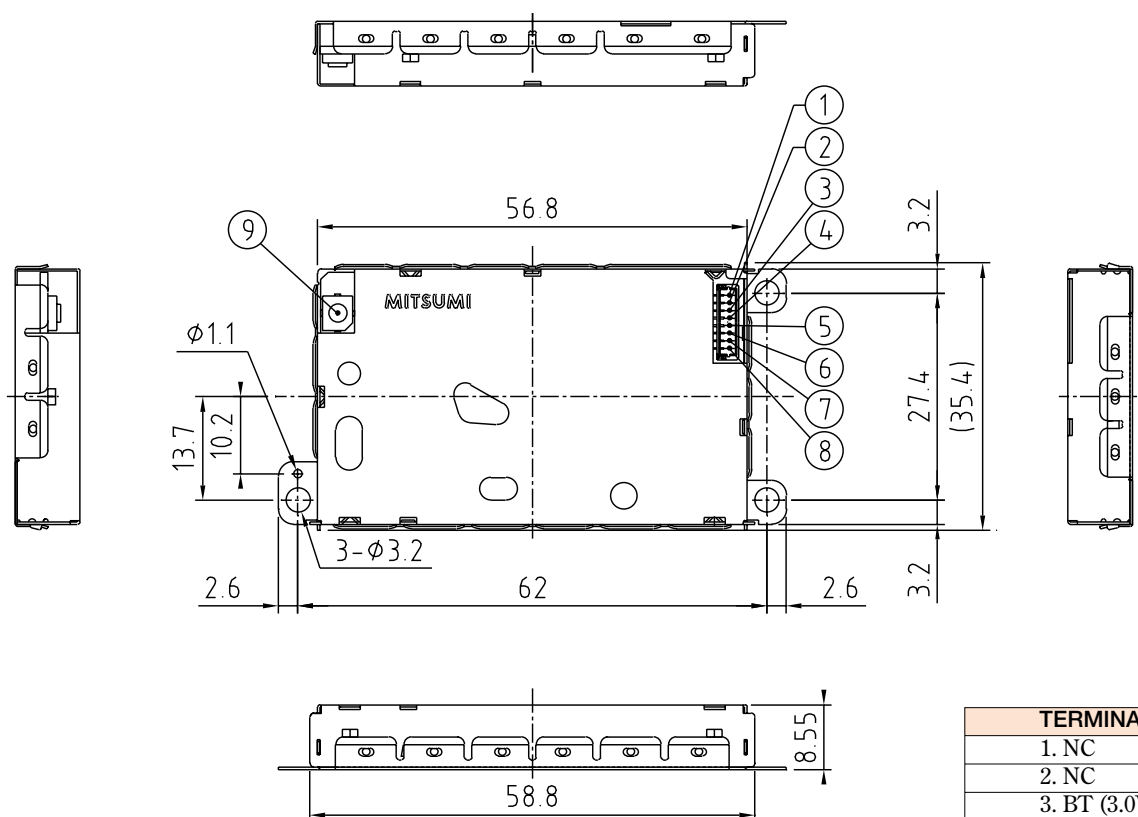
FEATURES

1. 12 channel (multi-channel) positioning.
3. Power source voltage of 5.0V/3.3V can be used.
3. Low current consumption is realized.
[Approx. 30% less than conventional models (provisional spec.)]
4. Handles differential GPS (RTCM SC-104/DARC)
5. The initial positioning time us greatly reduced.
6. Conformable to all formats.

SPECIFICATIONS

Item	Specifications
Receiving Method	Multi-Channels (12channels)
Receiving Frequency	1575.42MHz, C/Acode
Sensitivity	-130dBm at antenna
Positioning Accuracy	100m RMS (SA ON, DOP=2.5) 20m RMS (SA OFF, DOP=2.5)
Power Requirement	5.0V/3.3V±5%
Temperature Range	
Operating Temperature Range	-20°C~+75°C
Storage Temperature Range	-40°C~+85°C

DIMENSIONS



TERMINALS
1. NC
2. NC
3. BT (3.0V)
4. Tx
5. Rx
6. Vcc (3.3V)
7. D GPS
8. GND
9. ANT IN

Unit : mm
General tolerance : ±0.5mm