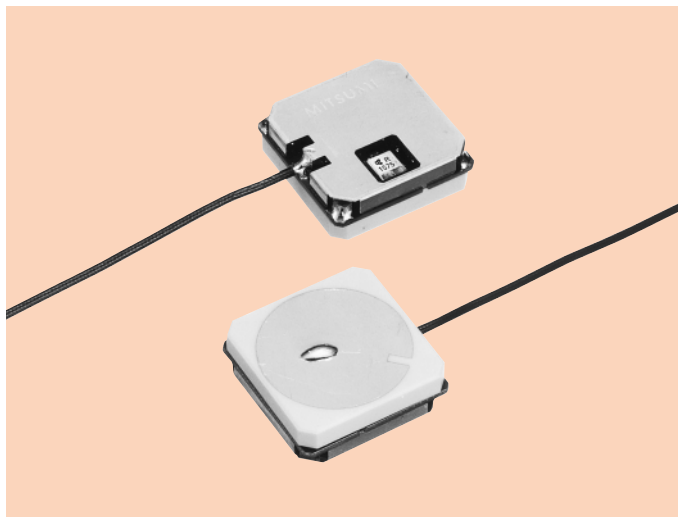


# GPS Antenna GPA-CG2B1

Telecommunication component

## OUTLINE

This antenna has high sensitivity for effective reception of GPS satellite waves. The antenna element + LNA (low noise amp) + cable are supplied as a package. Ideal for use with handy and portable sets.



## FEATURES

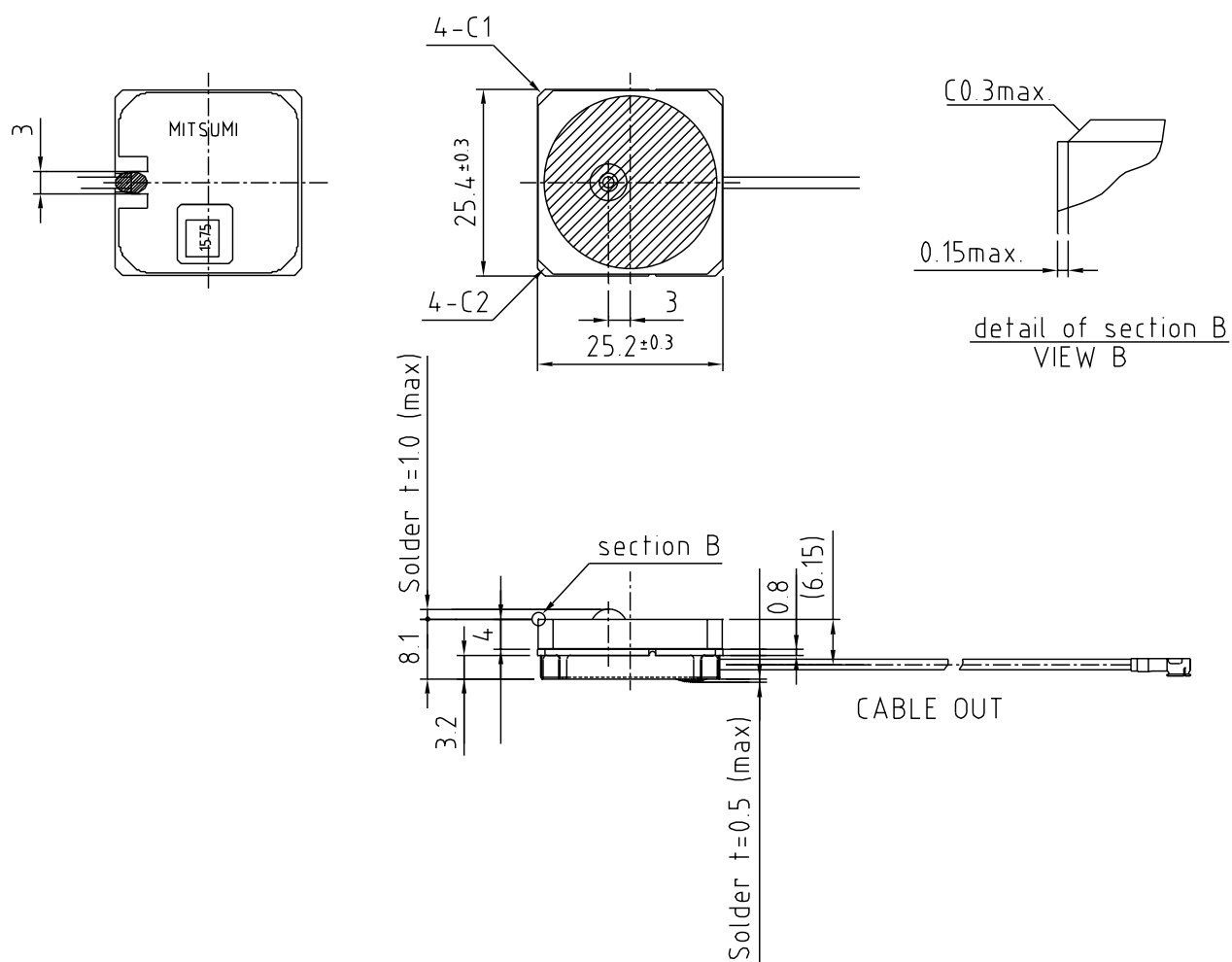
1. Can be supplied without housing.
2. Custom antenna pattern design for a specified housing.
3. Slim type.  $t=8$ . Imm (not including solders between power pin and cable)
4. Low power voltage, low current consumption type. Voltage: 2.5V min.
5. High gain, low noise (HEMTs used in LAN first-stage amp) <Gain : 26dBi, NF : 1.2dB>

## SPECIFICATIONS

Item		Specifications
Antenna Part	Receiving Frequency	1575.42±1.023MHz
	Receiving Polarization	Clockwise Circularly Polarized Wave
	Antenna Gain	0dBi min.
	Output Impedance	50Ω
LNA Part	Receiving Frequency	1575.42±1.023MHz
	Noise Figure	1.2dB typ.
	Gain	24dB typ. *
	Gain Flatness	1dB max.
Overall	Gain Rejection	23dB typ,
	Overall Gain	6dBi typ. (Elevation angle 90°)
	Power Supply	2.5V~6.0V
	Current Consumption	6mA typ., 8mA max.

\*Conditions: For cable length 100mm, HFL connector, incorporated in MITSUMI's standard case

## DIMENSIONS



\* We will comply with customer requests regarding connector type and cable length.

Unit : mm