

G Series

High Performance RFI Filters for Switching Power Supply



**UL Recognized
CSA Certified
VDE Approved**

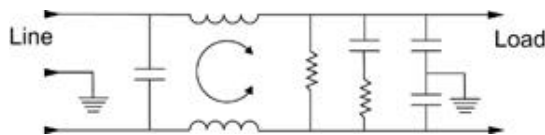
G Series

The G series RFI filters are designed to provide excellent common-mode and differential-mode attenuation for most digital electronic equipment (particularly switching power supplies) over the frequency range of 20kHz to 30MHz.

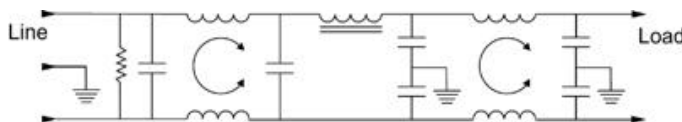
These filters are a size- and cost-effective solution for equipment that must meet the conducted emission limits of EN55022 Level A requirements, as well as FCC Part 15J, Class B.

The EG models also meet the very low leakage current requirements of SEV and VDE portable equipment as well as (120 volt) UL 544 nonpatient medical equipment.

Electrical Schematics 6EG & 6VG Models



10EG & 10VG Models



Resistor location for reference only.



Specifications

	EG Models	VG Models
Maximum leakage current, each line-to-ground		
@ 120 VAC 60 Hz:	.30 mA	1.2 mA
@ 250 VAC 50 Hz:	.50 mA	2.0 mA
Hipot rating (one minute):		
line-to-ground	2250 VDC	
line-to-line	1450 VDC	
Operating frequency:	50/60 Hz	
Rated voltage:	120/250 VAC	
Rated current:	@120 VAC	@ 250 VAC
6EG1/6VG1	6A	5A
10EG1/10VG1	10A	8A

Minimum insertion loss in dB:

Line-to-ground in 50 ohm circuit

Current Rating	Frequency-Mhz									
	.01	.05	.07	.1	.15	.5	1	5	10	30
EG Models										
6A	6	19	23	25	29	48	44	43	40	40
10A	8	10	15	18	42	64	65	65	60	60
VG Models										
6A	4	18	21	25	30	56	55	53	45	45
10A	5	10	24	37	50	72	70	70	60	60

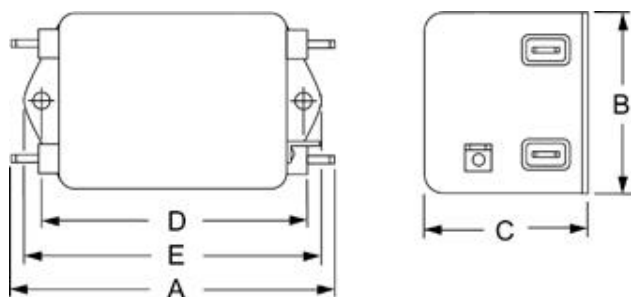
Line-to-line in 50 ohm circuit

Current Rating	Frequency-Mhz									
	.01	.05	.07	.1	.15	.5	1	5	10	30
EG Models										
6A	4	6	10	24	37	66	75	72	50	50
10A	5	5	5	26	40	65	65	60	70	70
VG Models										
6A	4	7	7	26	39	67	75	68	55	55
10A	5	5	7	26	39	65	60	60	70	70

Case Style

Metric shown in italics.

EG1 & VG1



Typical dimensions

Terminals: $\frac{.250}{6.35}$ (5) Holes: $\frac{.07}{1.8}$ Dia. (4) Slot: $\frac{.07 \times .16}{1.8 \times 4.1}$

Mounting holes: $\frac{.188}{4.78}$ Dia. (2)

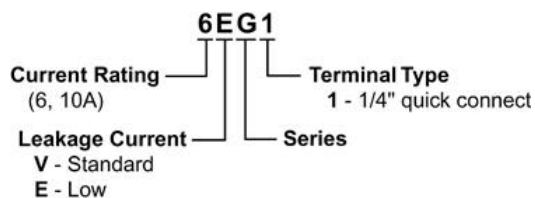
Case Dimensions

Metric shown in italics.

Part No.	A (max)	B (max)	C (max)	D $\pm .015$ $\pm .38$	E (max)
6EG1	$\frac{3.56}{90.4}$	$\frac{2.15}{54.6}$	$\frac{1.56}{39.6}$	$\frac{2.938}{74.63}$	$\frac{3.38}{85.8}$
6VG1	$\frac{3.56}{90.4}$	$\frac{2.15}{54.6}$	$\frac{1.56}{39.6}$	$\frac{2.938}{74.63}$	$\frac{3.38}{85.8}$
10EG1	$\frac{4.69}{119.1}$	$\frac{2.27}{57.7}$	$\frac{1.8}{45.7}$	$\frac{4.063}{103.2}$	$\frac{4.47}{113.5}$
10VG1	$\frac{4.69}{119.1}$	$\frac{2.27}{57.7}$	$\frac{1.8}{45.7}$	$\frac{4.063}{103.2}$	$\frac{4.47}{113.5}$

Ordering Information

Consult your local Corcom sales representative for pricing.



Available Part Numbers

6EG1	6VG1
10EG1	10VG1