

*Using breakthrough technology,
we aim for products that will create new markets.*

New Product News

Wider product range

It is the optimal to control ABS, a side air bag system.



Car Electronics Sensor

Angular Rate Sensor for driving control

Industry/Field: Car electronics

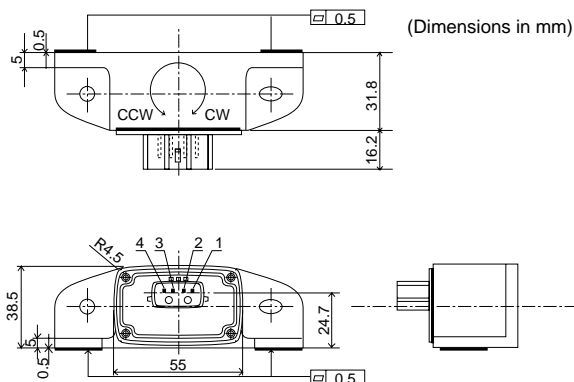
• Development goals:

As the business of the control of suddenly expanding advanced ABS, the side air bag system and so on. It developed the sensor of the high degree of accuracy and the high reliability.

• Features:

- ①** It is the optimal with the high degree of accuracy, the high reliability to control a automobile.
- ②** It has a self examination function.
- ③** The low cost, it is smaller than the present part.

• Construction:



• Characteristics/specifications:

Operating Temperature Range	Storage -40 to 85°C Operation -30 to 85°C
Supply Voltage Range	5 ± 0.25V (Output Ratiometric)
Zero Point Voltage (-30 to 85°C)	0.5 ± 0.048Vcc
Sensitivity (-30 to 85°C)	0.004Vcc ± 5% (/deg/sec)
Axis Sensitivity of Output Linearity	0.5% F.S
Frequency Characteristic	20Hz
Cross axis sensitivity	± 5%
Diagnosis	In case of the failure: Low

• Applications/usage examples:

- Advanced ABS
- Four wheel steering
- Side air bag system

• Explanation of part numbers:

1	2	3	4	5	6	7	8	9	10	11	12
E	W	T	S	5							
Product code				Series	Custom code				Reference		

Circuit

