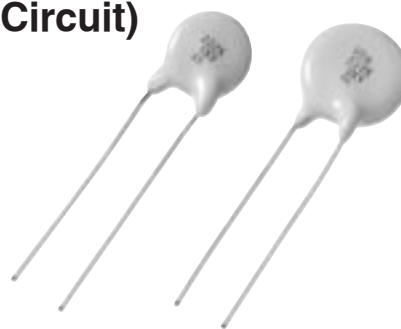


High Voltage Ceramic Disc Capacitors (For DC Circuit)

Series: **S Char. B/Y5P, 1 to 3 kVDC**

Series: **MEH Char. E/Y5U, 1 to 3 kVDC**



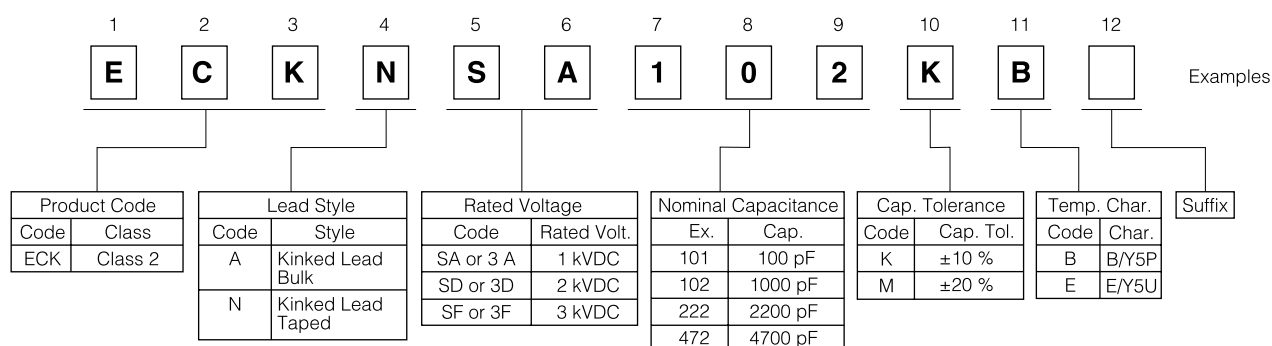
■ Features

- Miniature type for applications to high voltage DC circuits
- Flame-retardant insulation coating applied
- Easy mounting through kinked Lead and Radial Taping

■ Recommended Applications

- DC or Low frequency High Voltage circuits.
(Please use series KBP or series KRP to High frequency or pulse circuit such as Snubber circuit of switching power supply or Horizontal resonance circuit of TV and CRT display)

■ Explanation of Part Numbers



■ Specifications

Characteristics	Specifications			
Operating Temperature Range	-25 to 105 °C			
Rated Voltage	1 kVDC to 3 kVDC			
Dielectric Withstanding Voltage	200 % of Rated Voltage for 1 to 5 seconds			
Capacitance	Within specified tolerance, when measured at 1 kHz±20 %, 1 to 5 Vrms, and 20 °C			
Dissipation Factor (tanδ)	tan δ ≤ 0.025 at 1 kHz ± 20 %, 1 to 5 Vrms, and 20 °C			
Insulation Resistance	10000 M Ω min. at 500 VDC 1 minute electrification			
Temperature Characteristics	Siriese	Char.	max.Cap.Change	Temp.Range
	S	B	±10 %	-25 to 85 °C
	MEH	E	+20, -55 %	-25 to 85 °C

■ Precautions for Handling

See Page 93 to 95

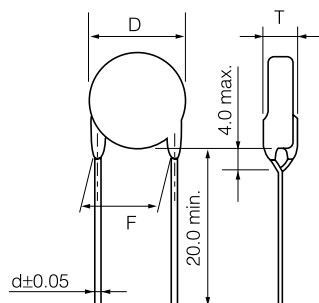
■ Packaging Information

See Page 96 to 97

■ Dimensions in mm (not to scale)

Standard lead style are kinked Lead and Kinked Lead Taping as below.
As usual style as Straight Lead, Straight Lead Taping and Crimped Lead Taping are available on special order.

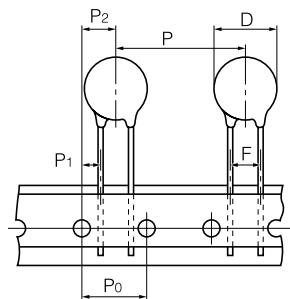
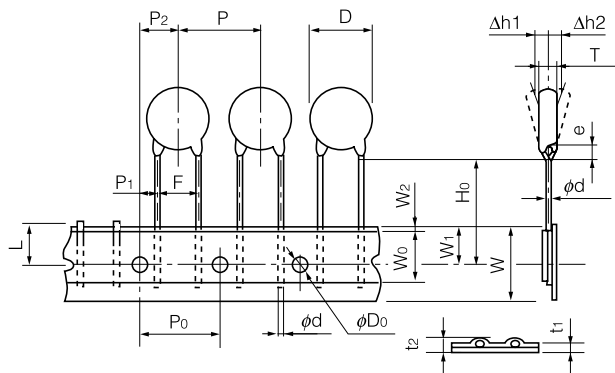
● Kinked Leaf Type



Note:Tolerance of Lead Space

Dim. F (Nominal)	Tolerance of Dim. F
5.0	±1.0
7.5	±1.5
10.0	±1.5

● Kinked Lead Taping type



Taping Type Symbol	N0	N1	N2
P	12.7±1.0	15.0±2.0	30.0±2.0
P ₀	12.7±0.3	15.0±0.3	
F	5.0±0.8	7.5±1.0	
P ₁	3.85±0.70	3.75±0.80	
P ₂	6.35±1.30	7.5±1.5	
D	To comply with each individual specification		
W	18.0 ^{+1.0} _{-0.5}		
W ₀	10.0 min.		
W ₁	9.0±0.5		
W ₂	3.0 max.		
H ₀	18.0 ^{-2.0} ₀		
e	4.0 max.		
ϕD ₀	4.0±0.2		
ϕd	0.60±0.05	0.65±0.05	
t ₁	0.6±0.3		
t ₂	1.5 max.		
T	To comply with each individual specification		
Δh ₁ , Δh ₂	2.0 max.		
L	11.0 max.		

Same dimensions as Type N0, N1 except for special dimensions.

■ Rating and Characteristics

● Series KB (Class 2, Temp. Char. B/Y5P, 1 to 3 kVDC)

Rated Volt.	Cap. in pF	Cap. Tol. (%)	Dimensions in mm		Kinked Lead Type (Bulk)			Kinked Lead Taping Type			
			D max.	T max.	Part Number	Dimensions in mm		Part Number	Taped Type	Dimensions in mm	
						F	d			F	d
1 kVDC	100	±10	6.0	5.5	ECKASA101KB	5.0	0.60	ECKNSA101KB	N0	5.0	0.60
	150	±10	6.0	5.5	ECKASA151KB	5.0	0.60	ECKNSA151KB	N0	5.0	0.60
	220	±10	6.0	5.5	ECKASA221KB	5.0	0.60	ECKNSA221KB	N0	5.0	0.60
	330	±10	6.0	5.5	ECKASA331KB	5.0	0.60	ECKNSA331KB	N0	5.0	0.60
	470	±10	6.0	5.5	ECKASA471KB	5.0	0.60	ECKNSA471KB	N0	5.0	0.60
	680	±10	6.0	5.5	ECKASA681KB	5.0	0.60	ECKNSA681KB	N0	5.0	0.60
	1000	±10	6.5	5.5	ECKASA102KB	5.0	0.60	ECKNSA102KB	N0	5.0	0.60
	1500	±10	7.5	5.5	ECKASA152KB	5.0	0.60	ECKNSA152KB	N0	5.0	0.60
	2200	±10	9.0	5.5	ECKASA222KB	5.0	0.60	ECKNSA222KB	N0	5.0	0.60
	3300	±10	10.0	5.5	ECKASA332KB	5.0	0.60	ECKNSA332KB	N0	5.0	0.60
2 kVDC	4700	±10	12.0	5.5	ECKASA472KB	5.0	0.60	ECKNSA472KB	N0	5.0	0.60
	100	±10	6.0	5.5	ECKASD101KB	5.0	0.60	ECKNSD101KB	N0	5.0	0.60
	150	±10	6.0	5.5	ECKASD151KB	5.0	0.60	ECKNSD151KB	N0	5.0	0.60
	220	±10	6.0	5.5	ECKASD221KB	5.0	0.60	ECKNSD221KB	N0	5.0	0.60
	330	±10	6.0	5.5	ECKASD331KB	5.0	0.60	ECKNSD331KB	N0	5.0	0.60
	470	±10	6.0	5.5	ECKASD471KB	5.0	0.60	ECKNSD471KB	N0	5.0	0.60
	680	±10	6.5	5.5	ECKASD681KB	5.0	0.60	ECKNSD681KB	N0	5.0	0.60
	1000	±10	7.5	5.5	ECKASD102KB	5.0	0.60	ECKNSD102KB	N0	5.0	0.60
	1500	±10	9.0	5.5	ECKASD152KB	5.0	0.60	ECKNSD152KB	N0	5.0	0.60
	2200	±10	10.5	5.5	ECKASD222KB	5.0	0.60	ECKNSD222KB	N0	5.0	0.60
3 kVDC	3300	±10	12.0	5.5	ECKASD332KB	5.0	0.60	ECKNSD332KB	N0	5.0	0.60
	4700	±10	14.5	5.5	ECKASD472KB	10.0	0.65	ECKNSD472KB	N2	7.5	0.65
	100	±10	6.0	5.5	ECKASF101KB	7.5	0.65	ECKNSF101KB	N1	7.5	0.65
	150	±10	6.0	5.5	ECKASF151KB	7.5	0.65	ECKNSF151KB	N1	7.5	0.65
	220	±10	6.0	5.5	ECKASF221KB	7.5	0.65	ECKNSF221KB	N1	7.5	0.65
	330	±10	6.0	5.5	ECKASF331KB	7.5	0.65	ECKNSF331KB	N1	7.5	0.65
	470	±10	7.0	5.5	ECKASF471KB	7.5	0.65	ECKNSF471KB	N1	7.5	0.65
	680	±10	8.0	5.5	ECKASF681KB	7.5	0.65	ECKNSF681KB	N1	7.5	0.65
	1000	±10	9.0	5.5	ECKASF102KB	7.5	0.65	ECKNSF102KB	N1	7.5	0.65
	1500	±10	11.0	5.5	ECKASF152KB	7.5	0.65	ECKNSF152KB	N1	7.5	0.65
	2200	±10	13.0	5.5	ECKASF222KB	7.5	0.65	ECKNSF222KB	N1	7.5	0.65

Note: Lead spacing (Dim. F) of 5.0 mm is available for rated voltage 3 kVDC capacitors that are 11.0 mm or less in the body diameter (Dim. D) by special order.

Rating and Characteristics

Series MEH (Class 2, Temp. Char. E/Y5U, 1 to 3 kVDC)

Rated Volt.	Cap. in pF	Cap. Tol. (%)	Dimensions in mm		Kinked Lead Type (Bulk)			Kinked Lead Taping Type			
			D max.	T max.	Part Number	Dimensions in mm		Part Number	Taped Type	Dimensions in mm	
						F	d			F	d
1 kVDC	680	±20	7.0	5.0	ECKA3A681MEH	5.0	0.60	ECKN3A681MEH	N0	5.0	0.60
	1000	±20	7.0	5.0	ECKA3A102MEH	5.0	0.60	ECKN3A102MEH	N0	5.0	0.60
	1500	±20	7.0	5.0	ECKA3A152MEH	5.0	0.60	ECKN3A152MEH	N0	5.0	0.60
	2200	±20	8.0	5.0	ECKA3A222MEH	5.0	0.60	ECKN3A222MEH	N0	5.0	0.60
	3300	±20	9.0	5.0	ECKA3A332MEH	5.0	0.60	ECKN3A332MEH	N0	5.0	0.60
	4700	±20	10.5	5.0	ECKA3A472MEH	5.0	0.60	ECKN3A472MEH	N0	5.0	0.60
	6800	±20	12.5	5.0	ECKA3A682MEH	5.0	0.60	ECKN3A682MEH	N1	7.5	0.65
	10000	±20	15.0	5.0	ECKA3A103MEH	10.0	0.65	ECKN3A103MEH	N2	7.5	0.65
2 kVDC	1000	±20	8.0	6.0	ECKA3D102MEH	7.5	0.65	ECKN3D102MEH	N1	7.5	0.65
	1500	±20	9.5	6.0	ECKA3D152MEH	7.5	0.65	ECKN3D152MEH	N1	7.5	0.65
	2200	±20	10.0	6.0	ECKA3D222MEH	7.5	0.65	ECKN3D222MEH	N1	7.5	0.65
	3300	±20	12.5	6.0	ECKA3D332MEH	7.5	0.65	ECKN3D332MEH	N1	7.5	0.65
	4700	±20	14.5	6.0	ECKA3D472MEH	10.0	0.65	ECKN3D472MEH	N2	7.5	0.65
	6800	±20	15.5	6.0	ECKA3D682MEH	10.0	0.65	ECKN3D682MEH	N2	7.5	0.65
3 kVDC	1000	±20	9.0	7.0	ECKA3F102MEH	7.5	0.65	ECKN3F102MEH	N1	7.5	0.65
	1500	±20	11.0	7.0	ECKA3F152MEH	7.5	0.65	ECKN3F152MEH	N1	7.5	0.65
	2200	±20	12.0	7.0	ECKA3F222MEH	7.5	0.65	ECKN3F222MEH	N1	7.5	0.65
	3300	±20	14.5	7.0	ECKA3F332MEH	10.0	0.65	ECKN3F332MEH	N2	7.5	0.65
	4700	±20	16.5	7.0	ECKA3F472MEH	10.0	0.65	ECKN3F472MEH	N2	7.5	0.65

Note:Lead spacing (Dim. F) of 5.0 mm is available for rated voltage 2 kVDC and 3 kVDC capacitors that are 11.0 mm or less in the body diameter (Dim. D) by special order.

Typical Temperature Characteristics

