



3.3V Single-Mode LC SFF 2x5 Transceiver For Fibre Channel

ES106-L3Tw-x-y-z Preliminary Data Sheet



Features

- 1300nm Fabry Perot or DFB Lasers
- Available for 10 and 25 km Distances
- Temperature Ranges: 0 to 70°C or -40 to 85°C
- Conforms to ANSI specifications for Fibre Channel applications at 1.06 Gbps
- Class 1 Laser Safety Conformance (FDA & IEC 60825)
- EMI meets FCC Class B Limit
- Single +3.3V Power Supply
- LV-PECL Data Input and Receiver Output Levels
- TTL Signal Detect (PECL can be special ordered)
- Industry Standard Duplex LC Optical Connector
- Operates with 9/125 μ m single mode optical fibers
- MSA conforming 2x5 SFF package
- Meets Mezzanine Height Standard of 9.8 mm
- Wave Solderable / Aqueous Washable

Product Description

The ES106-L3T from E2O Communications is a duplex-LC transceiver designed for use in Fibre Channel applications. It operates with a single +3.3V power supply. The transceiver conforms to the industry standard 2x5 footprint and meets the mezzanine height requirement of 9.8 mm. Each transceiver consists of an optical subassembly housing both the transmitter and the receiver, and an electrical subassembly. All are packaged together with a top metal cover and bottom shield.

The optical subassembly consists of 2 parts. The transmitter side has a high-performance 1300-nm FP laser and back facet monitor. The receiver side has an InGaAs PIN and a preamplifier.

All ES106-L3T transceivers also include a Signal Detect circuit, which provides a TTL logic high output when a usable input optical signal level is detected. If a PECL SD version is required, please contact your local representative.

Electromagnetic Interference (EMI) & Immunity

Most equipment designs utilizing high-speed transceivers will be required to meet the requirements of FCC in the United States, CENELEC EN55022 (CISPR 22) in Europe and VCCI in Japan.

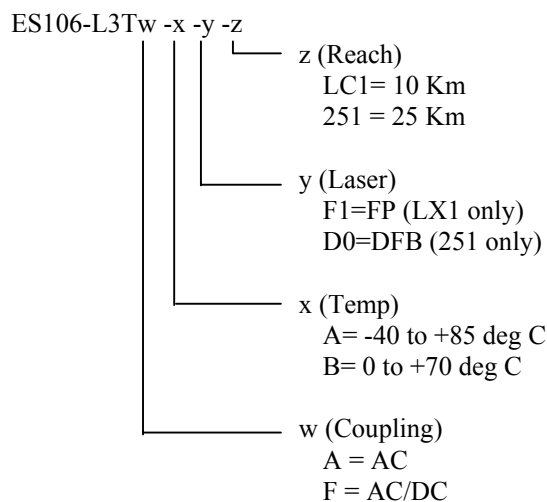
The ES106-L3T transceivers, with their shielded design, perform to the specified limits to assist the designer in the management of the overall equipment EMI performance. They meet the FCC Class B limits.

The ES106-L3T transceiver has been designed to provide good immunity to radio-frequency electromagnetic fields. Key components to achieve the good electromagnetic performance (EMC) are the metal cover, and chassis, internal, and bottom shields.

Eye Safety

The ES106-L3T 1300-nm laser-based transceivers have been designed to meet Class 1 eye safety. They conform to FDA 21CFR1040.10 and 1040.11 and IEC 60825-1.

Ordering Information





3.3V Single-Mode LC SFF 2x5 Transceiver For Fibre Channel

ABSOLUTE MAXIMUM RATINGS

PARAMETER	SYMBOL	MIN.	TYP.	MAX.	UNITS	NOTES
Storage Temperature	T _S	-40		+85	°C	
Soldering Temperature				260	°C	6 sec. on leads
Supply Voltage	V _{CC}			3.5	V	

RECOMMENDED OPERATING CONDITIONS

PARAMETER	SYMBOL	MIN.	TYP.	MAX.	UNITS	NOTES
Ambient Operating Temperature	T _A	0		+70	°C	Version "B"
		-40		+85	°C	Version "A"
Supply Voltage	V _{CC}	3.1		3.5	V	
Transmitter Differential Input Voltage	V _D	0.6		2.0	V	
Transmit Disable Input Volt - Lo	TD _{Lo}			0.3	V	
Transmit Disable Input Volt - Hi	TD _{Hi}	2.3			V	

ELECTRICAL CHARACTERISTICS (Over Specified T_{op} Range, V_{CC} = +3.1V to +3.5V)

PARAMETER	SYMBOL	MIN.	TYP.	MAX.	UNITS	NOTES
TRANSMITTER						
Supply Current	I _{CCT}			150	mA	
RECEIVER						
Supply Current	I _{CCR}			130	mA	
Data Output Voltage Swing (Differential)	V _{diff}	0.5		1.9	V	
Data Output Rise & Fall Times	t _r , t _f			0.4	ns	20% - 80%
TTL Signal Detect Output - High	V _{oh} , TTL	2.0		V _{cc}	V	
TTL Signal Detect Output - Low	V _{ol} , TTL	0.0		0.8	V	



3.3V Single-Mode LC SFF 2x5 Transceiver For Fibre Channel

OPTICAL CHARACTERISTICS (Over Specified T_{op} Range, $V_{CC} = +3.1V$ to $+3.5V$)

PARAMETER	SYMBOL	MIN.	TYP.	MAX.	UNITS	NOTES
TRANSMITTER						
Output Optical Power 9/125 μm , NA = 0.10 fiber	P_{OUT}	-9.5		-3	dBm avg.	For FP option
Output Optical Power 9/125 μm , NA = 0.10 fiber	P_{OUT}	-4		+1	dBm avg.	For DFB option
Optical Extinction Ratio		9			dB	
Center Wavelength	λ_c	1270		1355	nm	
Spectral Width – rms	σ			4	nm	For FP option
Spectral Width – rms	σ			0.1	nm	For DFB option
Side Mode Suppression Ratio	SMSR	30			dB	Applies to DFB option only
Optical Rise/Fall Time	t_r / t_f			0.26	ns	20-80%
Optical Modulation Amplitude	OMA	160			μW	Pk to Pk
Relative Intensity Noise	RIN		-122	-117	dB/Hz	
Transmitter Optical Contributed Jitter (TOTAL)	TJ			225	ps	
RECEIVER						
Minimum Optical Input Power (Sensitivity)	P_{IN}			-19	dBm avg.	
Maximum Optical Input Power (Saturation)	P_{IN}	-3			dBm avg.	
Operating Center Wavelength	λ_c	1270		1380	nm	
Optical Modulation Amplitude	OMA	15			μW	Pk to Pk
Return Loss		12			dB	
Signal Detect – Asserted	P_A			-19	dBm avg.	
Signal Detect – Deasserted	P_D	-30			dBm avg.	
Signal Detect – Hysteresis	$P_A - P_D$	1.0		5.0	dB	



3.3V Single-Mode LC SFF 2x5 Transceiver For Fibre Channel

TABLE 1. PINOUT TABLE

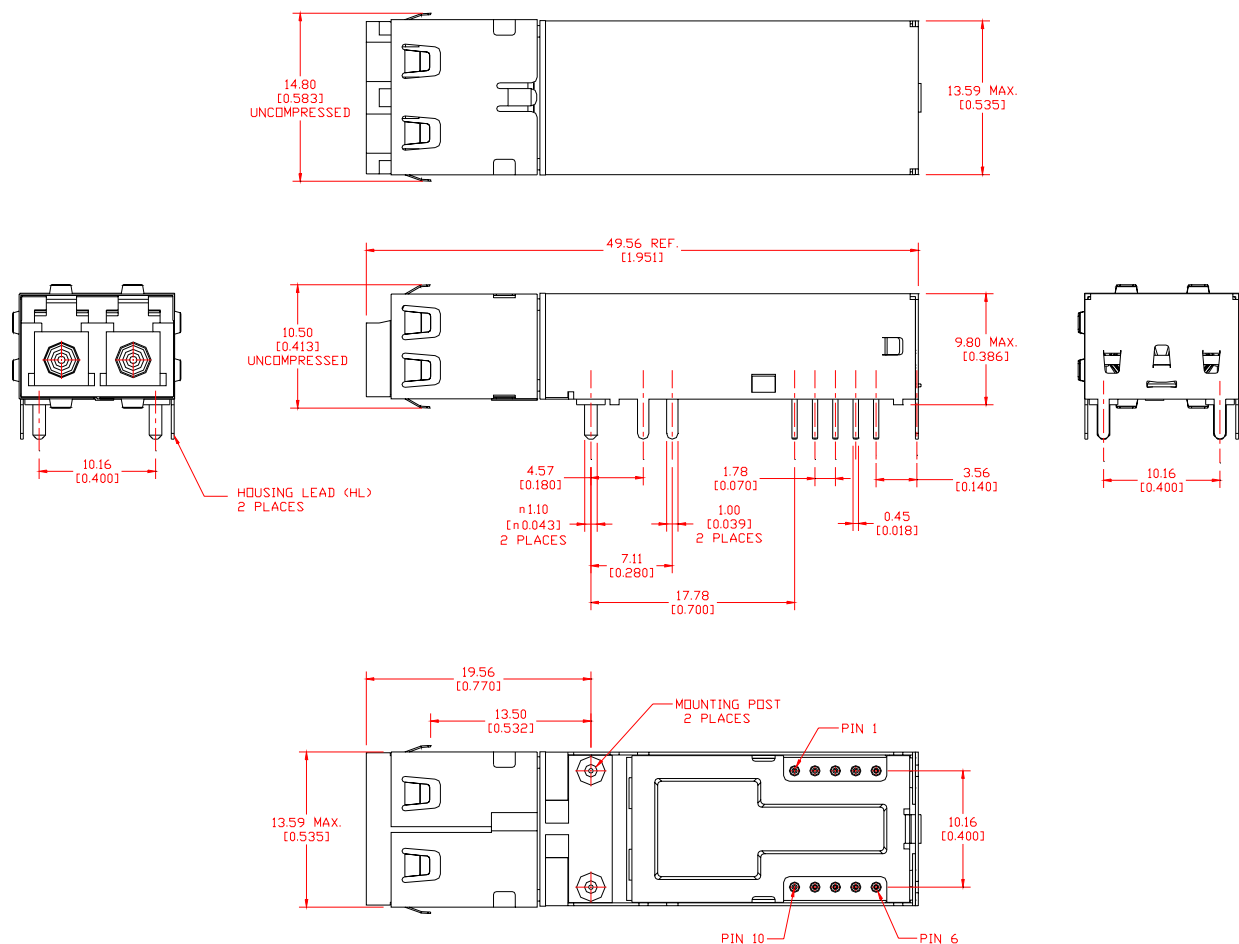
Pin	Symbol	Functional Description
Mounting Posts		The mounting posts are provided for transceiver mechanical attachment to the circuit board. They should not be connected to the circuit ground but can be connected to the chassis ground.
Housing Leads		The housing leads should be connected to circuit ground.
1	V _{EER}	Receiver Signal Ground
2	V _{CCR}	+3.3 Volt Receiver Power Supply
3	SD	Signal Detect is a TTL output. A high level indicates a valid optical signal.
4	RD-	Receiver Data Inverted Differential Output
5	RD+	Receiver Data Non-inverted Differential Output
6	V _{CCT}	+3.3V Transmitter Power Supply
7	V _{EET}	Transmitter Signal Ground
8	TXdis	Transmitter Disable
9	TD+	Transmitter Data Non-inverted Differential Input
10	TD-	Transmitter Data Inverted Differential Input



3.3V Single-Mode LC SFF 2x5 Transceiver For Fibre Channel

Mechanical Specs:

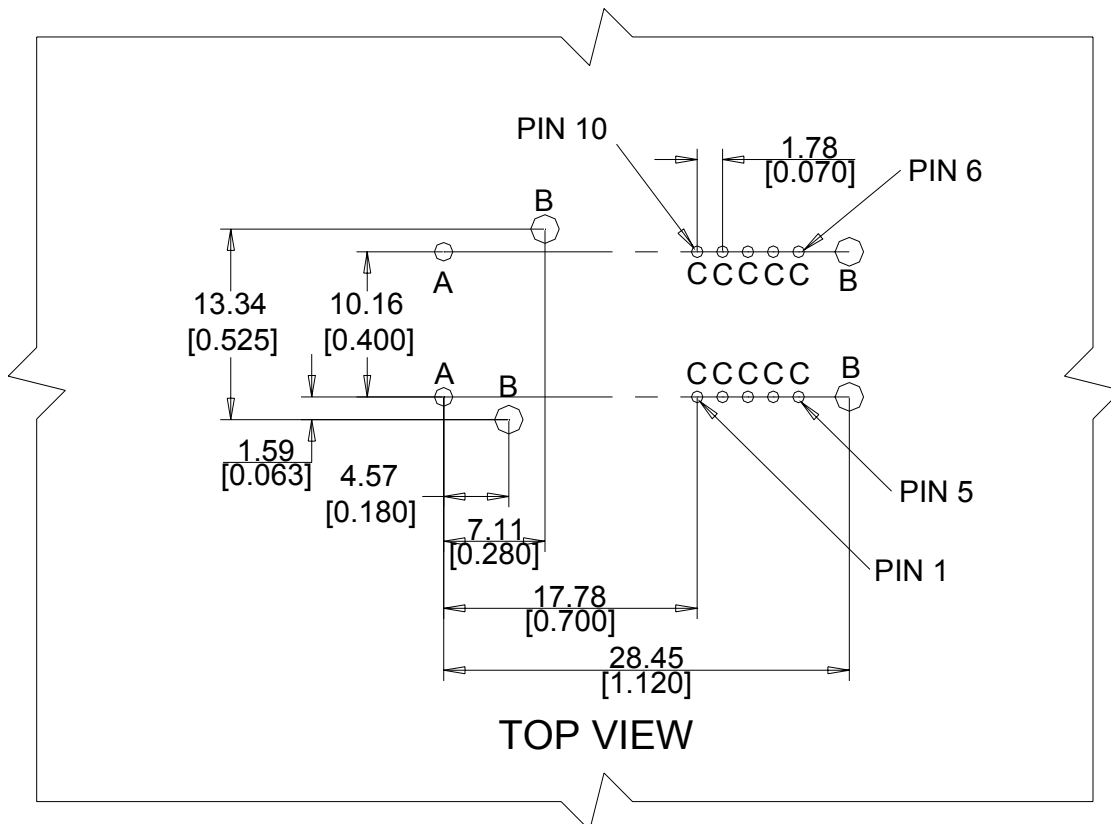
Figure 1 - SFF Transceiver Package Dimensions in mm and [inches].





3.3V Single-Mode LC SFF 2x5 Transceiver For Fibre Channel

Figure 2 – Recommended PCB Layout in mm and [inches].



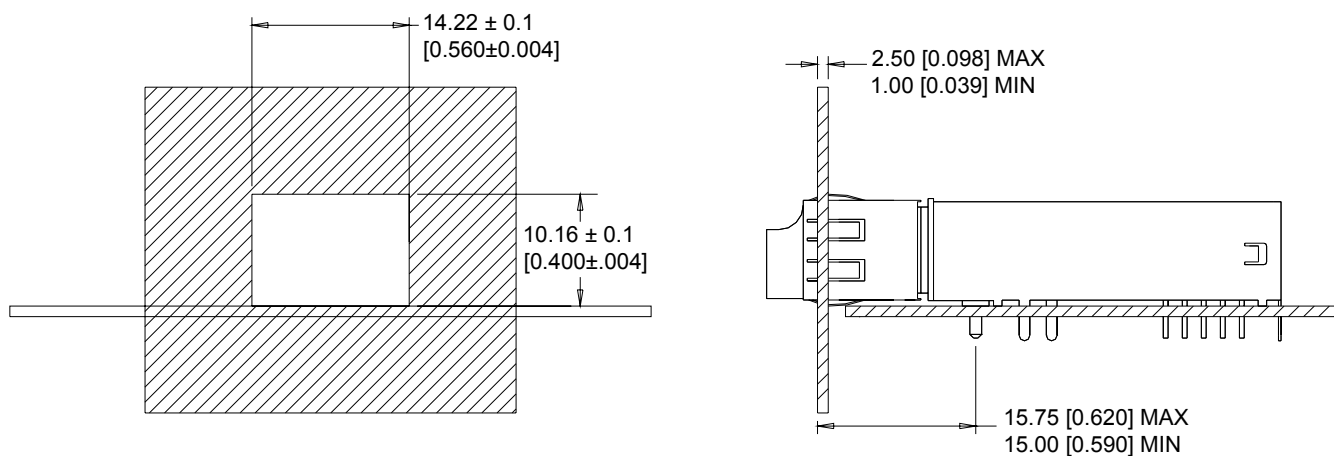
RECOMMENDED HOLE SIZES

SYMBOL	QTY	DIAMETER(mm)	DIAMETER[inches]
A	2	1.40±0.1	[0.055±0.004]
B	4	1.40±0.1	[0.055±0.004]
C	10	0.81±0.1	[0.032±0.004]



3.3V Single-Mode LC SFF 2x5 Transceiver For Fibre Channel

Figure 3 – Bezel Opening Dimensions in mm and [inches].



E2O Communications, Inc. reserves the right to make changes in product design, features, capabilities, function, or specifications at any time without notice. Information supplied by E2O Communications, Inc. is believed to be accurate and reliable at the time of release. No responsibility is assumed by E2O Communications, Inc. for its use nor for any infringements of third parties, which may result from its use. No license is granted by implication or otherwise under any patent right of E2O Communications, Inc.