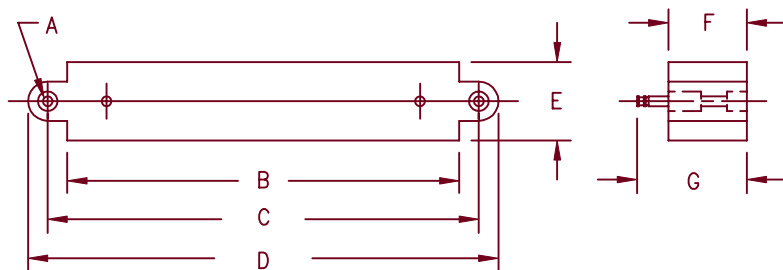


High Voltage Encapsulated Assemblies

EF Half Wave Series



| Dimensions | | | Notes |
|------------|--------|-------------|-------|
| | Inches | Millimeters | |
| A | --- | --- | 1 |
| B | 5.50 | 139.7 | |
| C | 6.00 | 152.4 | |
| D | 6.625 | 168.3 | |
| E | 1.25 | 31.8 | |
| F | 1.25 | 31.8 | |
| G | 1.688 | 42.88 | |

Note 1: .2031" (5.159 mm) Dia. Hole

Microsemi
Catalog Number

EF*H16
EF*H20

Max. PRV Rating
Per Circuit Arm

16 KV
20 KV

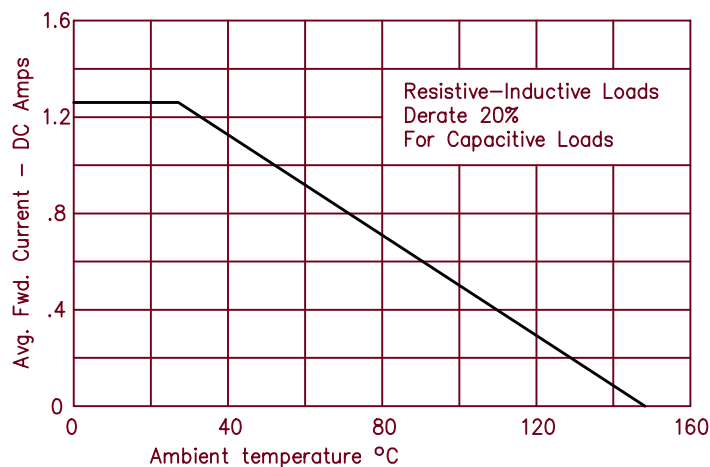
*Add T for Turret Terminals
*Add F for Faston Terminals
*Add L for Flexible Lead (min length-4")

- Encapsulated assembly
- Half Wave
- Half Wave rating up to 20,000 PRV
- Completely sealed, compact, corrosion and moisture resistant

Electrical Characteristics

Circuit: Single half wave
AC Input: Up to 20,000 PRV
DC Output: Up to 1.25 Amps DC (see curve)
Surge Current
Rating: 15 Amps peak for one cycle
Loads: Resistive, Inductive, Capacitive, Continuous
Duty Cycle: Continuous
Cooling: Convection

Single-phase half wave current ratings



3-12-01 Rev. 1



COLORADO

Microsemi

800 Hoyt Street
Broomfield, CO. 80020
PH: (303) 469-2161
FAX: (303) 466-3775
www.microsemi.com