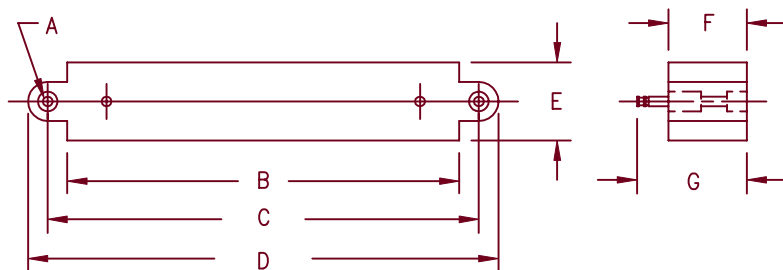


High Voltage Encapsulated Assemblies

EF30 Half Wave Series



Dimensions			Notes
	Inches	Millimeters	
A	---	---	1
B	5.50	139.7	
C	6.00	152.4	
D	6.625	168.3	
E	1.25	31.8	
F	1.25	31.8	
G	1.688	42.88	

Note 1: .2031" (5.159 mm) Dia. Hole

Microsemi
Catalog Number

EF30* H16
EF30* H20

Max. PRV Rating
Per Circuit Arm

16 KV
20 KV

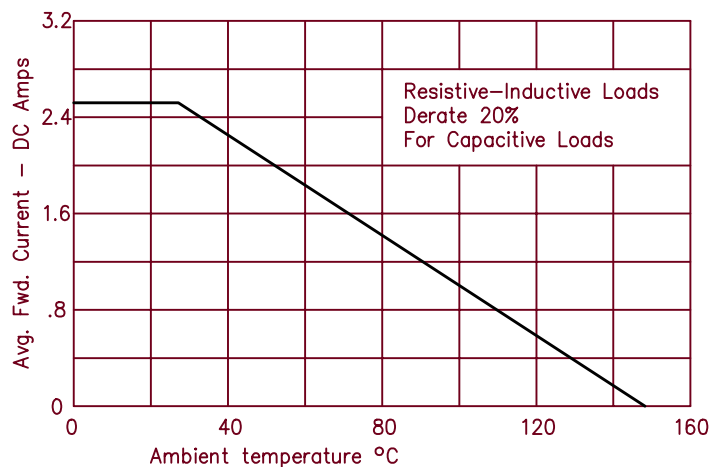
*Add T for Turret Terminals
*Add F for Faston Terminals
*Add L for Flexible Lead (min length-4")

- Encapsulated assembly
- Half Wave
- Half Wave rating up to 20,000 PRV
- Completely sealed, compact, corrosion and moisture resistant

Electrical Characteristics

Circuit: Single half wave
AC Input: Up to 20,000 PRV
DC Output: Up to 2.5 Amps DC (see curve)
Surge Current
Rating: 80 Amps peak for one cycle
Loads: Resistive, Inductive, Capacitive, Continuous
Duty Cycle: Continuous
Cooling: Convection

Single-phase half wave current ratings



10-8-01 Rev. IR



COLORADO

Microsemi

800 Hoyt Street
Broomfield, CO. 80020
PH: (303) 469-2161
FAX: (303) 466-3775
www.microsemi.com