



EVERLIGHT ELECTRONICS CO., LTD.

DATA SHEET

MODEL NO : EL-8609-12
DATE : 2000/7/6
DEPARTMENT : R&D CENTER
REVISION : 1.2

RECEIVED			
<input checked="" type="checkbox"/> MASS PRODUCTION			
<input type="checkbox"/> PRELIMINARY			
<input type="checkbox"/> CUSTOMER DESIGN			
DEVICE NUMBER : DOL-609-001			
PAGE : 4			
CUSTOMER	DESIGNER	CHECKER	APPROVER

1.2	Change content.	2000/7/6
REV	DESCRIPTION	RELEASE DATE

OFFICE : NO 25, Lane 76, Chung Yang Rd, Sec.3, Tucheng, Taipei 236, Taiwan, R.O.C.

TEL : 886-2-2267-2000,2267-9936

FAX : 886-2-2267-6244, 2267-6189, 2267-6306

<http://www.everlight.com>



LIGHT SOURCE

MODEL NO: EL-8609-12

Device Number: DOL-609-001 REV: 1.2

Page: 1/4 ECN: _____

■Features:

- Excellent characters & appearances
- Low power requirements
- Mechanically and spectrally matched to the 40 pcs of LED
- High reliability & long life

■Descriptions:

The product is assembled with lens and a row of AlGaAs/GaAs red LED mounted on PC board. The output of emitting light is a uniform line light source.

The product gets excellent light output operated at 12V and suitable as a light source of Facsimile and Image scanner.

■Applications:

- Facsimile
- Image scanner

OFFICE : NO 25, Lane 76, Chung Yang Rd, Sec.3, Tucheng, Taipei 236, Taiwan, R.O.C.

TEL : 886-2-2267-2000, 2267-9936

FAX : 886-2-2267-6244, 2267-6189, 2267-6306

<http://www.everlight.com>



EVERLIGHT ELECTRONICS CO.,LTD.

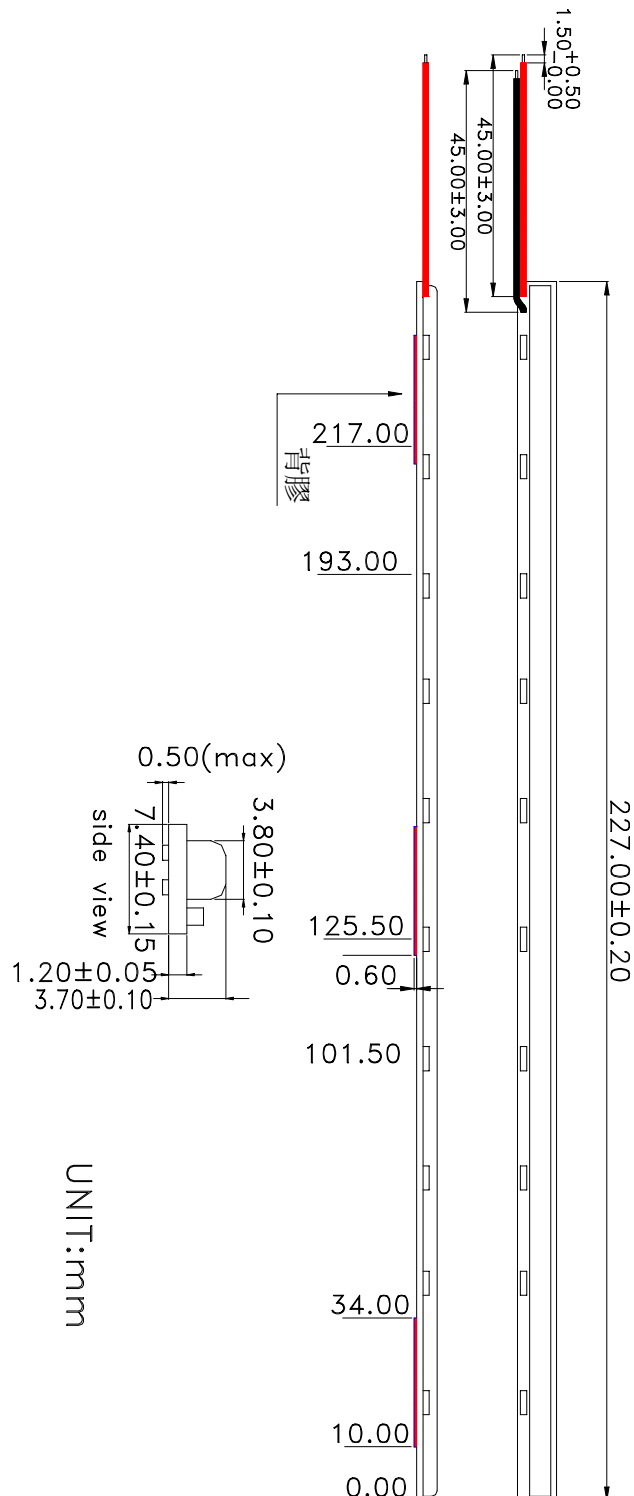
LIGHT SOURCE

MODEL NO: EL-8609-12

Device Number: DOL-609-001 REV: 1.2

Page: 2/4 ECN: _____

■ Package Dimensions:



**LIGHT SOURCE****MODEL NO: EL-8609-12**Device Number: DOL-609-001 REV: 1.2Page: 3/4 ECN: _____**■ Absolute Maximum Ratings (Ta=25°C)**

Parameter	Symbol	Rating	Units
Power dissipation	P _O	2.5	W
Forward current	I _F	170	mA
Reverse voltage	V _R	16	V
Operating temperature	T _{OPR}	0~+50	°C
Storage temperature	T _{STG}	-25~+75	°C

■ Electro-Optical Characteristics (Ta=25°C)

Parameter	Symbol	Test Condition	Min.	Typ.	Max.	Units
Forward current	V _{DD}	V _{DD} =12V	--	--	170	mA
Reverse current	I _F	V _R =16V	--	--	100	μA
Illuminance	L _{up}	V _{DD} =12V	800	1200	1600	L _X
Effective light length	L	V _{DD} =12V	216	--	--	mm
Uniformity	U _p	V _{DD} =12V	--	--	15	%
Effective Illuminated half width	ΔL	V _{DD} =12V	--	4	--	mm
Peak emission wavelength	λ _p	V _{DD} =12V	--	570	--	nm
Spectral line half width	Δλ	V _{DD} =12V	--	30	--	nm



EVERLIGHT ELECTRONICS CO., LTD.

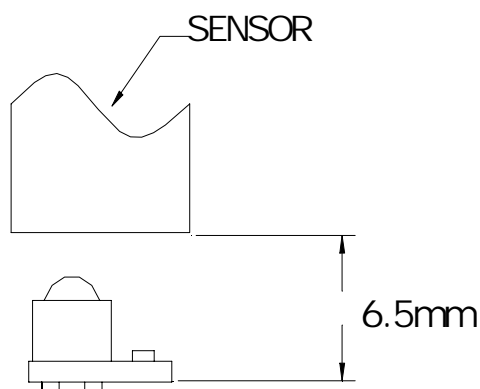
LIGHT SOURCE

MODEL NO: EL-8609-12

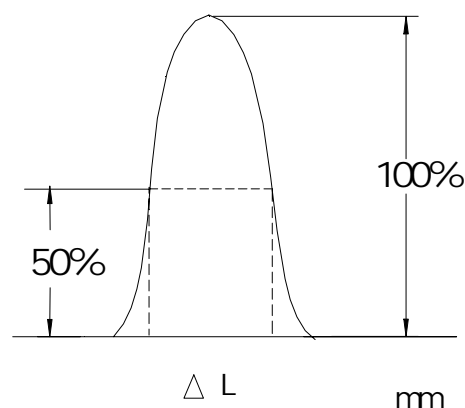
Device Number: DOL-609-001 REV: 1.2

Page: 4/4 ECN: _____

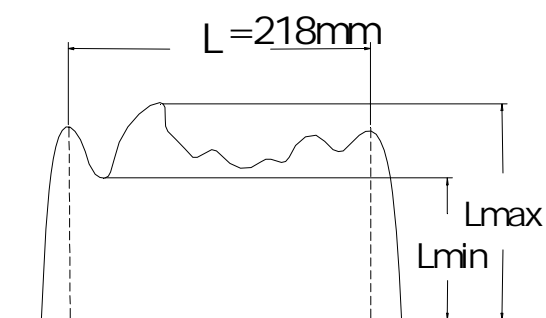
■ Attach height



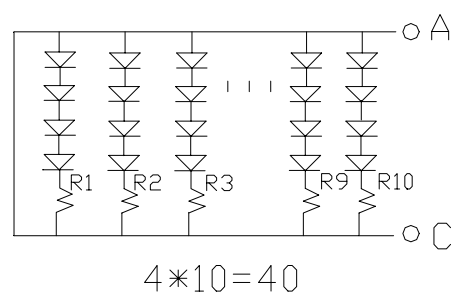
■ Effective illuminated half width



■ Uniformity



■ Circuit diagram



$$up = \frac{L_{max} - L_{min}}{L_{max} + L_{min}} \times 100\%$$