

TRIPLE BALANCED MIXER

2 to 18 GHz/ +10 to +13 dBm LO/ Low Conv.Loss/ Wideband IF/ Hermetic Pkg with Removable SMA



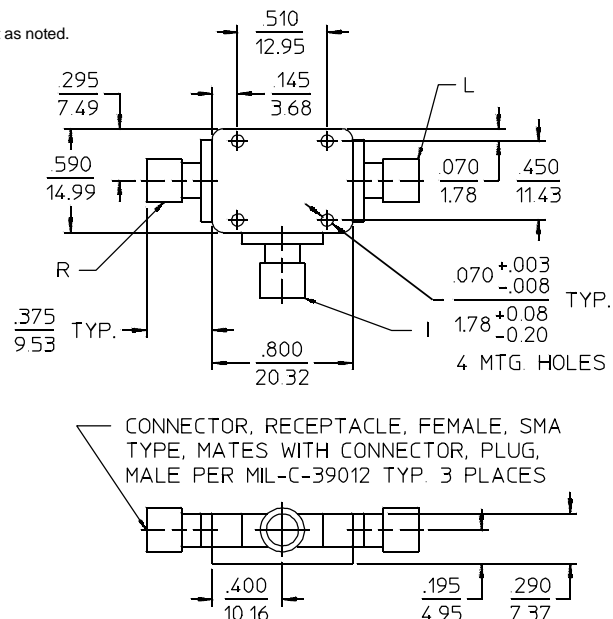
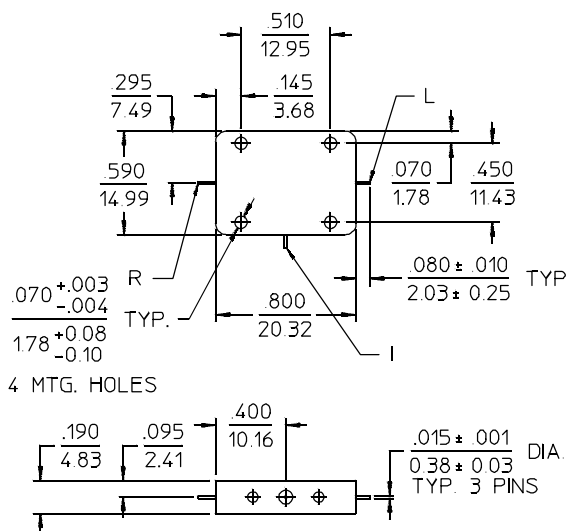
PRINCIPAL SPECIFICATIONS

Model Number	RF/LO	LO Drive	IF	Conversion		Isolation,		Isolation,		Isolation,		VSWR,	
	Frequency, GHz	Range, dBm, Nom.	Range, GHz	Loss, SSB, dB, Max.	Typ.	L-R, dB, Min.	Typ.	L-X, dB, Min.	Typ.	R-X, dB, Min.	Typ.	LO	RF
DML-6B-10G	2 - 18	+10 to+ 13	0.5 - 6 0.01 - 8	8.5 9.5	6.5 6.5	20	30	20	30	20	30	2.0:1	2.0:1

All specifications are as measured in a 50Ω system, at nominal LO Power, in a down converter application.

Package Outline

NOTES: 1. Tolerance on 3 place decimals $\pm .010$ (.25) except as noted.
2. Dimensions in inches over mm.



General Notes:

1. The DML-6B-10G Triple Balanced Mixer covers the frequency range of 2 to 18 GHz and is optimized for wide IF bandwidth, low loss and broad RF/LO bandwidth. The hermetic removable SMA package is used for performance testing and reliability.
2. Merrimac offers a broad selection of Balanced Mixers ideal for a variety of signal processing functions from 20 kHz to 20 GHz and for applications ranging from routine to very special.
3. All Merrimac mixers comply with MIL-M-28837 and may be supplied screened for compliance with additional specifications for military and space applications requiring the highest reliability.

23Feb96

GENERAL SPECIFICATIONS

Third Order Input Intercept:	+15 dBm typ.
Noise Figure:	Within ± 1 dB of Conversion Loss
1 dB Compression Point: (Referenced to Input)	+8 dBm typ.
1 dB Desensitization Point: (Referenced to Input)	+7 dBm typ.
Polarity Sense:	Positive
DC Offset Voltage:	5 - 15 mV typ.
Weight with SMA, nom:	0.7 oz (20 g)
Operating Temperature:	- 55° to +85°C

For further information contact **MERRIMAC/41 Fairfield Pl., West Caldwell, NJ, 07006 / 973-575-1300 / FAX 973-575-0531**