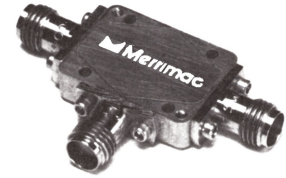


- SPACE QUALIFIED
- WIDEBAND, 2 - 18 GHz
- REMOVABLE SMA CONNECTORS



TECHNICAL DESCRIPTION / APPLICATION

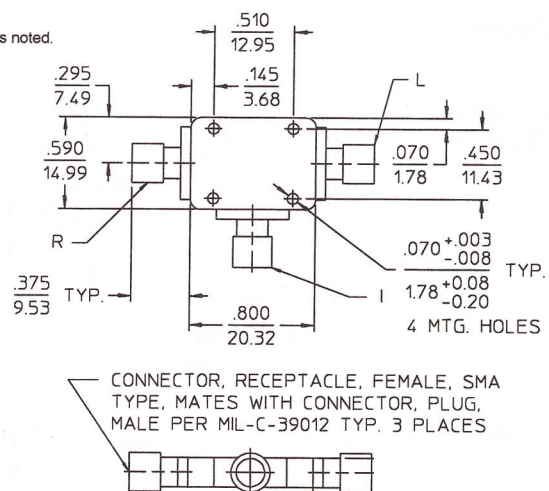
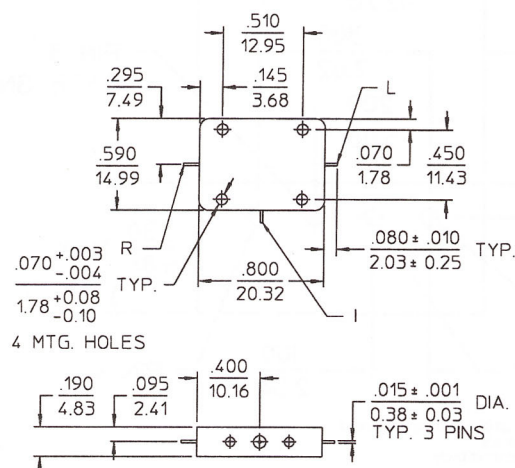
The DML-2B-10G SQ is a broadband, high reliability microwave mixer with removable SMA connectors. This mixer has been designed, manufactured and qualified per Merrimac document CENG-0001, "Standard Design Requirements for Space Qualified Devices." Connectors are supplied installed, but not captivated, for test purposes and subsequent removal for flight.

GENERAL SPECIFICATIONS

MODEL NUMBER	LO/RF BANDWIDTH	IF BANDWIDTH	ISOLATION dB MIN.			CONVERSION LOSS		LO POWER LEVEL
	GHz	GHz	L-R	L-X	R-X	TYP.	MAX.	dBm
DML-2B-10G SQ	2 - 18	DC - 2	20	18	18	7 dB	9 dB	+7 TO +10
RF POWER LEVEL		INPUT INTERCEPT	IMPEDANCE			WEIGHT	OPERATING TEMPERATURE	
dBm MAX		dBm MIN.	NOM.			MAX.		
0		+10	50 OHM			15 g	-55° TO + 85° C	

PACKAGE OUTLINE

NOTES: 1. Tolerance on 3 place decimals $\pm 0.010(.25)$ except as noted.
2. Dimensions in inches over mm.



CONNECTOR, RECEPTACLE, FEMALE, SMA
TYPE, MATES WITH CONNECTOR, PLUG,
MALE PER MIL-C-39012 TYP. 3 PLACES