



2-WAY IN-PHASE DIVIDER/COMBINER

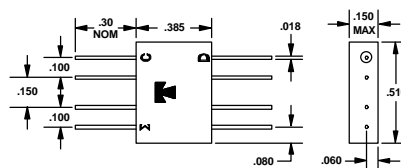
MODEL DF81A

Guaranteed Specifications

Parameter	Range	Limits
Frequency	5 MHz to 500 MHz	Min
Insertion Loss	5 MHz to 500 MHz	.5 dB Max
Isolation	5 MHz to 500 MHz	26 dB Min
Amplitude Balance	5 MHz to 500 MHz	.2 dB Max
Phase Balance	5 MHz to 500 MHz	2° Max
VSWR	5 MHz to 500 MHz	1.3:1 Max
Impedance	50 Ohms	Nominal

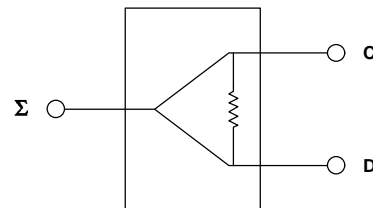
Note: All specifications apply in a 50 Ohm system. 75 Ohm models are available.

Outline Drawing



Weight (Approx.) 2.5 grams

Block Diagram



Case is Signal Ground

Maximum Ratings

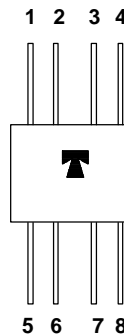
Input Power	1.5 Watt
Internal Dissipation	100 mW
Temperature Range	-54°C to +85°C

Reliability

All units are designed and constructed to meet or exceed specifications after exposure to any or all of the following MIL-STD-202 tests which are applicable.

Test	Method	Condition
Temperature Cycle	107G	A
Thermal Cycle	107G	AA
Seal	112D	D
Vibration	204D	A
Solderability	208F	
Terminal Strength	211A	A
Terminal Fatigue	211A	C
Mechanical Shock	213B	C

Connections



SUM PORT	1
PORT C	4
PORT D	8
GROUND	2,3,5,6,7

All characteristics of Tele-Tech products may be modified to meet customer requirements.

P.O. Box 790, Bozeman, Montana 59717
Phone: (406) 586-0291 Fax: (406) 587-0653 E-mail: admin@tele-tech-rf.com