

metro **CHANNEL** **M-4** **D-4**

Four-Channel Coarse WDM (CWDM) Multiplexer and Demultiplexer

The Tsunami™ MetroChannel™ M-4 and D-4 are four-channel coarse WDM (CWDM) multiplexer and demultiplexer modules designed for integration into metro and access optical communication networks. The multiplexer module combines four wavelengths (channels) traveling in four separate singlemode fibers into one singlemode fiber, while the demultiplexer module separates four wavelengths traveling in one singlemode fiber into four wavelengths, each traveling in a separate singlemode fiber. The modules operate independent of data rate and protocol, and are designed to work with uncooled lasers having wavelengths spaced 20 nm apart. Deployed in CWDM architectures, Tsunami's modules provide an ideal balance of price and performance for multiplexing and demultiplexing in metro and access networks.

features & benefits)

Multiplexes or demultiplexes 4 channels with 20 nm separation and 13 nm bandwidth

Designed for use with uncooled lasers

Thin film filter technology enables cost-effective performance

Operate independent of protocol and data rate

Low insertion loss supports long links

High channel isolation minimizes cross-talk

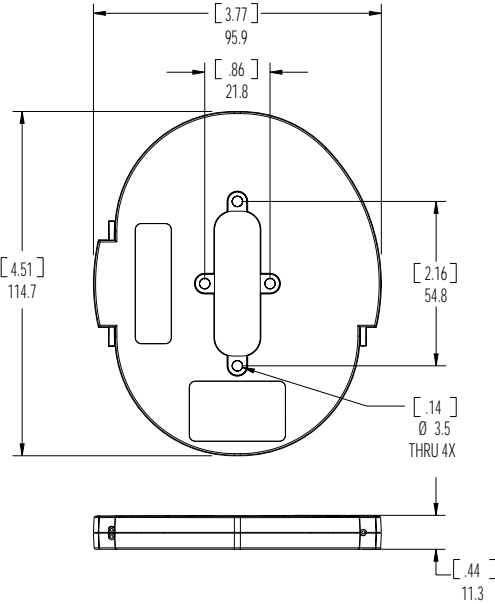
Qualified in accordance with applicable Telcordia and NEBS standards



Specifications

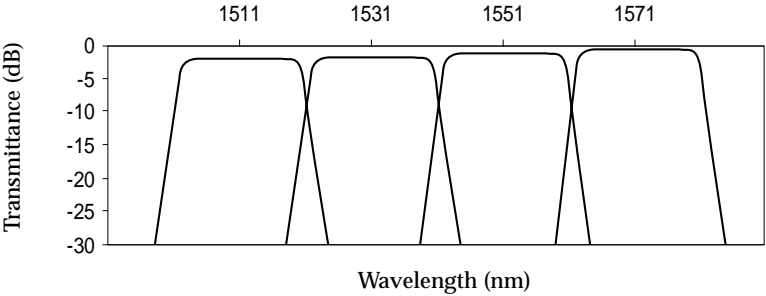
	MUX		DEMUX
Channel center wavelengths (select four)		1471, 1491, 1511, 1531, 1551, 1571, 1591, 1611 nm	
Channel center wavelength separation		20 nm	
Channel bandwidth at channel insertion loss		≥ 13 nm	
Insertion loss	≤ 1.5 dB		≤ 1.8 dB
Link loss with mux/demux combination		≤ 2.2 dB	
Return loss		≥ 50 dB	
Adjacent channel isolation	–		≥ 30 dB
Non-adjacent channel isolation	–		≥ 50 dB
Channel uniformity with mux/demux combination		≤ 0.8 dB	
Input power		300 mW max	
Polarization dependent loss		≤ 0.1 dB	
Thermal stability		0.005 nm/°C	
Pigtail fiber type	Corning® SMF-28™ (9/125 /250 micron) Connectorized pigtails have 900 micron buffer.		
Pigtail fiber length		1 m ± 5 cm	
Operating temperature		- 10°C to +65°C	
Storage temperature		- 40°C to +85°C	
Dimensions		114.7 × 95.9 × 11.3 mm [4.51 × 3.77 × .44 in]	

Specifications do not include connectors. The modules are tested in accordance with applicable Telcordia™ 1209, Telcordia 1221 and NEBS standards. Please contact Tsunami to discuss specific performance requirements.



[inches]
millimeters

Transmittance (Demux)



Part Number

MUX OR DEMUX

4

WAVELENGTHS

CONNECTOR

100

M = Mux
D = Demux

2 = 1511, 1531, 1551, 1571
3 = 1551, 1571, 1591, 1611
4 = 1471, 1491, 1511, 1531

NO = No connector
FP = FC / UPC
SP = SC / UPC
FA = FC / APC
SA = SC / APC
LC = LC
MU = MU
CU = Custom

Custom Options *
100 = Standard

* Tsunami will assign a custom number.

For additional information, please contact Tsunami's Sales Department at sales@tsunamioptics.com
980 Linda Vista Avenue • Mountain View, CA 94043
(ph) (650) 940-6800 • (fx) (650) 940-6802 • www.tsunamioptics.com

©2001 Tsunami Optics, Inc. All rights reserved. Tsunami™, MetroChannel™, and the Tsunami logo design are trademarks of Tsunami Optics, Inc. Corning is a registered trademark and SMF-28 is a trademark of Corning Incorporated. Telcordia is a trademark of Telcordia Technologies, Inc. Tsunami reserves the right to change specifications without notice.

C503 91B25