

Isolator

Single Junction

Model: DSW1078-A

Application - WIRELESS

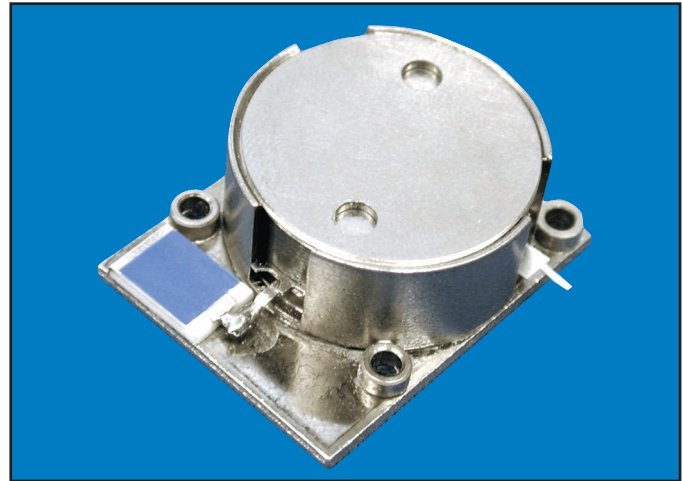
- ♦ Base Station
- ♦ UMTS, EGSM, PCS 1900/DCS 1800, TDMA
- ♦ MCPA Amplified Output

Benefits

- ♦ Low Loss
- ♦ In Serial Production
- ♦ Wide Temperature Range
- ♦ Reliable Performance

Features

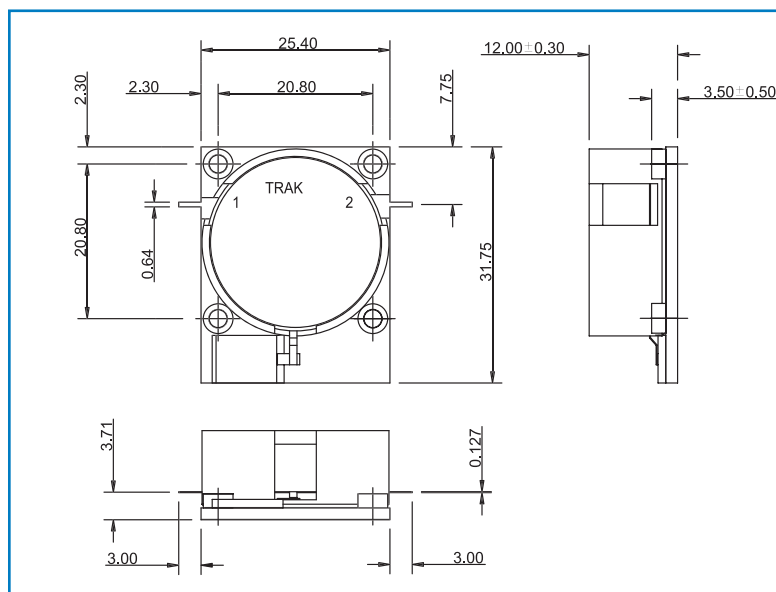
- ♦ Robust Construction
- ♦ Integral High Power Load
- ♦ Options are CW or CCW Circulation, Tab Width & Finish
- ♦ Available in PCS1900, EGSM, AMPS, DCS1800



Specifications

Parameter	Specification			Unit	Parameter	Specification			Unit
Frequency	2100 - 2170			MHz		Min	Typ	Max	
	Min	Typ	Max		Operating Temp.	-10	-	+85	°C
Isolation	23	25	-	dB	Forward Power	-	50	100	W
Insertion Loss	-	0.25	0.30	dB	Reverse Power	-	50	200	W
Return Loss	23	25	-	dB	Interface	Tab			-

Drawing



Dimensions: mm



TRAK Microwave Limited
Dunsinane Avenue, Dundee, Scotland DD2 3QF
Phone: +44 (0)1382 427 200 ♦ Fax: +44 (0)1382 833 599
E-mail: trakeurope@trak.com ♦ www.trak.com

