

Compact, Low Cost High Voltage Converter

**1.5Kv to 25Kv (Positive or Negative) @ 1.5 Watts
DX Series**

www.emcohighvoltage.com

EMCO
High Voltage Corporation



The DX series is a line of compact power supplies providing up to 25,000 VDC for air cleaners, igniters, dielectric testers, electrostatic field generators and other applications requiring a compact source of clean, reliable, low cost high voltage. This unit exhibits low noise and EMI/RFI by utilizing a quasi-sinewave

oscillator and a fully enclosed ferrite pot core transformer. The output voltage is controlled by an external potentiometer or resistor. Both positive and negative outputs are available. The high voltage connection is made through a 30kV silicone wire. Call, fax, or e-mail your requirements for immediate attention.

FEATURES

- Resistance Controllable
- Low EMI/RFI Sinewave Oscillator
- Small Size
- Short Circuit Protection
- Low Cost/High Performance

OPTIONS

- 24V Input
- Input/Output Connectors
- Input/Output Isolation
- Voltage Monitor

APPLICATIONS

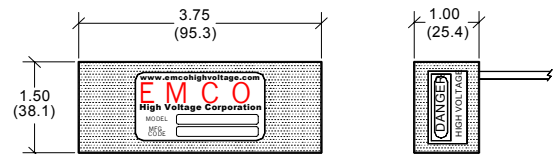
- Air cleaners
- Igniters
- Dielectric Testers
- Ionizers
- Electrostatic Generators
- CRT Anodes
- Image Intensifiers
- Capacitor Charging

MODEL	OUTPUT VOLTAGE	OUTPUT CURRENT
DX100	1.5kV to 10kV	100 uA
DX100N	-1.5kV to -10kV	100 uA
DX120	1.8kV to 12kV	100 uA
DX120N	-1.8kV to -12kV	100 uA
DX150	2.5kV to 15kV	100 uA
DX150N	-2.5kV to -15kV	100 uA
DX200	3kV to 20kV	75 uA
DX200N	-3kV to -20kV	75 uA
DX250	4kV to 25kV	75 uA
DX250N	-4kV to -25kV	75 uA

WIRE COLOR	AWG	FUNCTION
Red	22	(+) Input
Black	22	Ground (Input/Output)
Orange	22	Voltage Control
30KV Silicone	22	HV Output

TIP: LEAVE ORANGE WIRE DISCONNECTED AND VARY THE INPUT VOLTAGE FOR PROPORTIONAL OPERATION.

Dimensions are in Inches
Dimensional Tolerances: $\pm .03$ (.76 mm)
(Metric Equivalents in Parentheses)

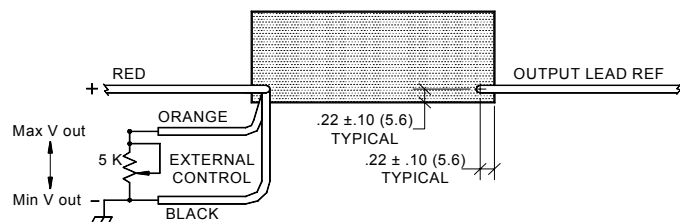
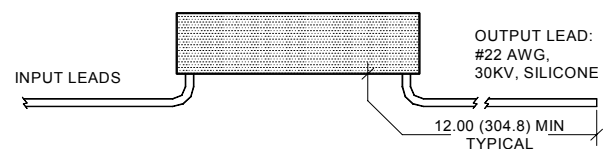


PHYSICAL CHARACTERISTICS

SIZE: 3.75 x 1.5 x 1 (95.3 x 38.1 x 25.4)
WEIGHT: 7 Ounces (198 grams)
PACKAGING: Fully Encapsulated
CASE MATERIAL: Glass-filled Epoxy
HV OUTPUT LEAD: #22 AWG, 30KV, Silicone

ELECTRICAL SPECIFICATIONS

INPUT VOLTAGE: 12 Volts (-5%, +10%)
INPUT CURRENT, FULL LOAD: <400 mA
OUTPUT VOLTAGE: See Table
OUTPUT CURRENT: See Table
RIPPLE: 2%
VOLTAGE CONTROL: Connect 5K Potentiometer with wiper arm to orange wire. Connect remaining potentiometer lead to black wire.
OPERATING TEMP: -10° to +50° C



e-mail sales@emcohighvoltage.com
Web site www.emcohighvoltage.com

Phone (209) 223-3626 Fax (209) 223-2779
11126 Ridge Road, Sutter Creek CA 95685

We reserve the right to make changes without notification