

DM N96 Series GPS Antenna

The active Global Positioning System (GPS) DM N96 Series antenna combines an L1 GPS antenna and a Low Noise Amplifier (LNA) into an extremely rugged, sealed enclosure suitable for severe environments.

Commonly used in CDMA base stations for GPS Timing applications, the antenna can be hard mounted in the standard configuration and is available with mounting bracket options.

SPECIFICATIONS

ELECTRICAL	Frequency	1575 MHz \pm 4.00 MHz
	VSWR	2.0:1
	Gain	with LNA: 26 dB min
	Impedance	50 Ohms
	Polarization	RHCP
	Noise Figure	1.5 dB max
	Voltage	5 \pm 0.25V on center conductor
	Current	40 mA max
MECHANICAL	Pattern Coverage	hemispherical
	Connector	N Female
	Finish	white royalite
	Mounting	see outline drawing on back page
	Dimensions	see outline drawing on back page
	Weight	0.7 lbs max (antenna only) 1.2 lbs max (with bracket)

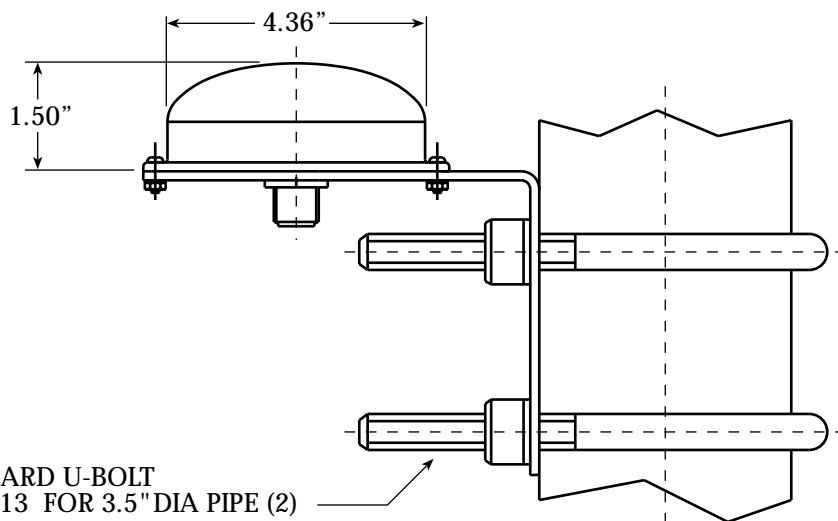
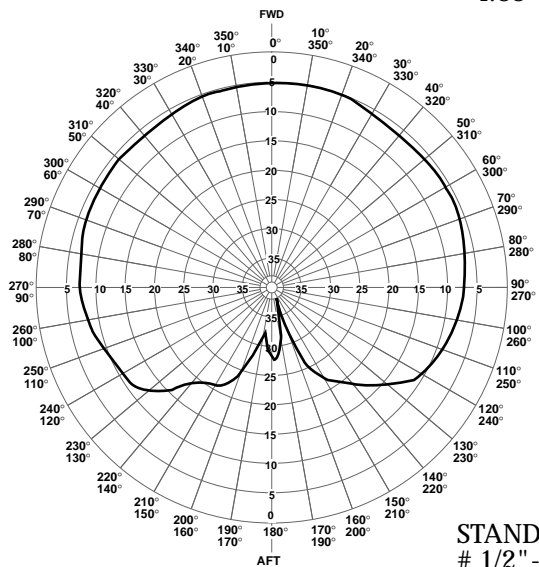
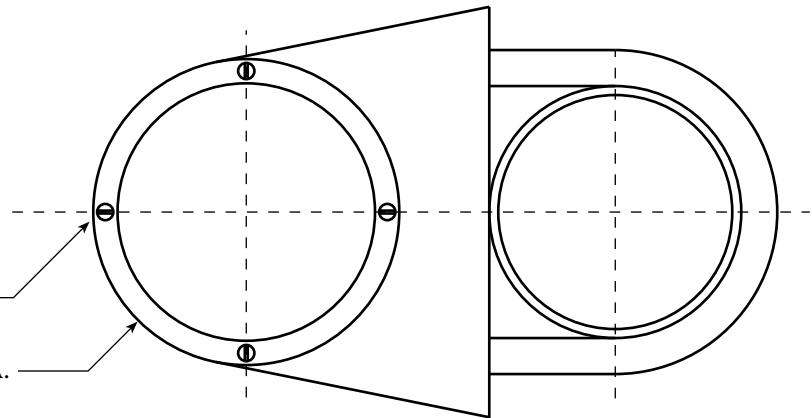
Specifications subject to change without notice.

DM N96 Series GPS Antenna

N96-1-1/B MOUNT
(3.5" DIA. POLE)

Ø 0.14" HOLES (4)
EQUALLY SPACED Ø 3.917"

4.83" DIA.



STANDARD U-BOLT
1/2" - 13 FOR 3.5" DIA PIPE (2)

N96-1-1/A MOUNT
(ANY POLE FROM 1" TO 2.5" DIA. IS O.K.)

1" DIA. POLE

2 1/2" DIA. POLE

#3/8-16 x 1.5" lg

#3/8-16 x 3" lg

PART NUMBER

-1-1

-1-1/A

-1-1/B

COMMENT

ANTENNA ONLY

ANTENNA W/V-MOUNT

ANTENNA W/U-BOLTS