

## DM C146-20 Series GPS Antenna

Providing subcentimeter accuracy, the DM C146-20 antenna is superb for geodetic surveying and tracking with precision global positioning systems. This lower cost commercial version offers unsurpassed hemispherical radiation pattern coverage and phase stability like that of the DM C146 series pioneered for military applications. In fact, the Military has depended on the DM C146 airborne versions since the early 1980s.

Now the same electrical performance is available in the DM C140-20, which is perfect for less severe and hazardous environments. It operates at a range of 1200 to 1625 MHz, with a gain of -4 dBic at 5° above the horizon.

Small, with a 5.19-inch diameter radome, and lightweight at 0.5 pounds, the DM C146-20 is a broadband antenna that operates at the L1, L2 and GLONASS frequencies. Available in white or black, this low profile GPS antenna is easily installed. (See mounting and dimension information.)

## SPECIFICATIONS

ELECTRICAL	Frequency	1200 – 1625 MHz (L1, L2, GLONASS)
	VSWR	2.0:1
	Gain	-4 dBic minimum above 5°
	Impedance	50 Ohms
	Polarization	RHCP
	Pattern	Hemispherical
MECHANICAL	Connector	SMA Male
	Finish	White (-2); or Black (-3)
	Mounting	Twelve #8 screws (not supplied)
	Dimensions	See back of page

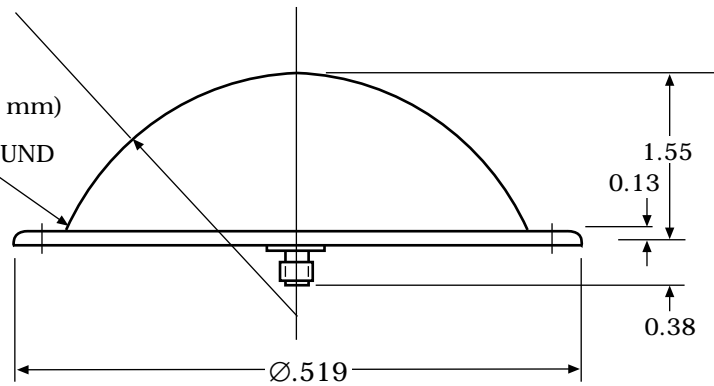
Specifications subject to change without notice.

1099-05(M27)

## DM C146-20 Series GPS Antenna

2.28 (57.9 mm)  
SPHERICAL  
RADIUS MAX

0.06 (1.5 mm)  
R REF  
ALL AROUND



0.187 DIA (4.75 mm)  
12 HOLES EQUALLY  
SPACED ON A  
4.675 BC (118.75 mm)  
TOL NONCUMULATIVE

