

CB Series

Power Combiners and Splitters

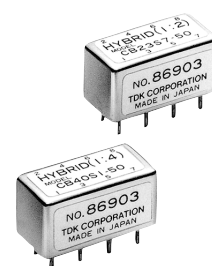
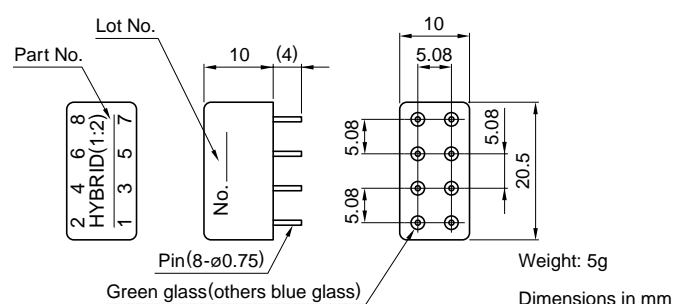
Pin-Terminal and Connector Types

FEATURES

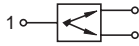
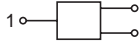




- Designed for medium power applications.
- When all terminals are connected to matched loads, no heatsinking is required. However, if the two inputs are largely out of phase, or if the device will be subjected to open or short-circuited loads, an appropriate heat sink is recommended to maintain rated power.

MINIATURE CASE TYPE

SHAPES AND DIMENSIONS



ELECTRICAL CHARACTERISTICS

Part No.	Frequency range (MHz)	Band width (%)max.	VSWR max. Z ₀ =50, 75Ω	Isolation (dB) min.	Insertion loss (dB) max.	Pin connection	Power rating (W)	Internal load dissipation (W)	
2-WAY (0°)Z ₀ : 50Ω CB20S Series									
CB20S4-50	0.04 to 50	Full	1.15[50Ω]	25	0.4		1	1/8	
CB20S1-50	5 to 230	Full	1.2[50Ω]	25	0.5		1	1/8	
CB20S2-50	5 to 500	Full	1.3[50Ω]	20	0.8		1	1/8	
CB20S5-50	10 to 1000	Full	1.5[50Ω]	18	2		1	1/8	
2-WAY (0°)Z ₀ : 75Ω CB20S Series									
CB20S4-75	0.06 to 25	Full	1.15[75Ω]	25	0.4		1	1/8	
CB20S1-75	5 to 230	Full	1.3[75Ω]	20	0.7		1	1/8	
2-WAY (90°)Z ₀ : 50, 75Ω CB23S Series									
CB23SXX-50	20 to 200	±15	1.2[50Ω]	20	0.6		1	1/8	
CB23SXX-75	20 to 200	±15	1.2[75Ω]	20	0.6		1	1/8	
2-WAY (90°)Z ₀ : 50, 75Ω CB21S Series									
CB21SXX-50	20 to 200	±15	1.2[50Ω]	20	0.6		1	1/8	
CB21SXX-75	20 to 200	±15	1.2[75Ω]	20	0.6		1	1/8	
3-WAY (0°)Z ₀ : 50Ω CB30S Series									
CB30S4-50	0.04 to 50	Full	1.14[50Ω]	25	0.4		1	1/8	
CB30S1-50	5 to 230	Full	1.2[50Ω]	25	0.6		1	1/8	
CB30S2-50	5 to 400	Full	1.35[50Ω]	20	1.3		1	1/8	
3-WAY (0°)Z ₀ : 75Ω CB30S Series									
CB30S4-75	0.06 to 25	Full	1.15[75Ω]	25	0.4		1	1/8	
CB30S1-75	5 to 230	Full	1.3[75Ω]	20	0.7		1	1/8	
4-WAY (0°)Z ₀ : 50Ω CB40S Series									
CB40S4-50	0.05 to 50	Full	1.15[50Ω]	25	0.4		1	1/8	
CB40S1-50	5 to 230	Full	1.3[50Ω]	25	0.8		1	1/8	
4-WAY (0°)Z ₀ : 75Ω CB40S Series									
CB40S4-75	0.06 to 25	Full	1.15[75Ω]	25	0.4			1	1/8
CB40S1-75	5 to 230	Full	1.3[75Ω]	20	0.8	1		1/8	

- Temperature range: -20 to +60°C/Operating ambient humidity: 95(%)RH max.

RF Components

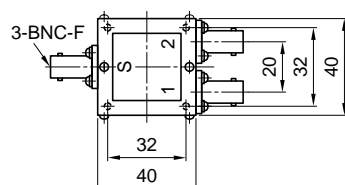
CB Series

Power Combiners and Splitters

Pin-Terminal and Connector Types

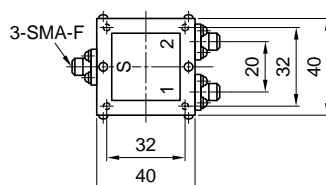
MEDIUM AND HIGH POWER TYPE

SHAPES AND DIMENSIONS



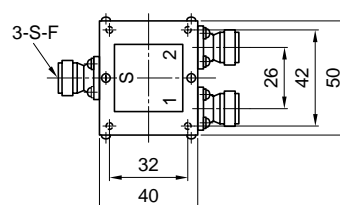
Mounting tap 4-M3 depth 4

Fig. 1



Mounting tap 4-M3 depth 4

Fig. 2



Mounting tap 4-M3 depth 4

Fig. 3

Dimensions in mm

ELECTRICAL CHARACTERISTICS

Part No.	Frequency range (MHz)	Band width (%) max.	VSWR max. $Z_0=50\Omega$	Isolation (dB) min.	Insertion loss (dB) max.	Matched power rating (W)	Internal load dissipation (W)	Weight (g)	Connector type	Fig.
2-WAY (0°) BNC Type										
CB721S-B	0.1 to 60	Full	1.1	25	0.4	15	8	70	BNC	1
CB722S-B	30 to 230	Full	1.1	25	0.35	20	8	70	BNC	1
CB723S-B	150 to 350	Full	1.2	20	0.55	20	8	70	BNC	1
SMA Type										
CB721S-3	0.1 to 60	Full	1.1	25	0.4	15	8	50	SMA	2
CB722S-3	30 to 230	Full	1.1	25	0.35	20	8	50	SMA	2
CB723S-3	150 to 350	Full	1.2	20	0.55	20	8	50	SMA	2
S Type										
CB721S-S	0.1 to 60	Full	1.1	25	0.4	15	8	100	S-R*	3
CB722S-S	30 to 230	Full	1.1	25	0.35	20	8	100	S-R*	3
CB723S-S	150 to 350	Full	1.2	20	0.55	20	8	100	S-R*	3

* Equivalent to N type

• Temperature range: -20 to +60°C/Operating ambient humidity: 95(%)RH max.