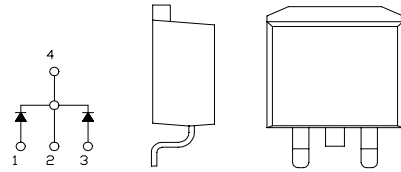


SBD Type : C10T04QH

OUTLINE DRAWING

FEATURES

- *SQUARE-PAK TO-263AB(SMD)
- Packaged in 24mm Tape and Reel
- *Dual Diodes – Cathode Common
- *Low Forward Voltage Drop
- *High Surge Capability
- *Tj=150 °C operation



Maximum Ratings

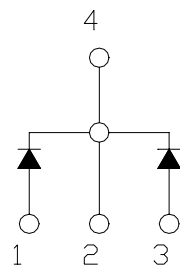
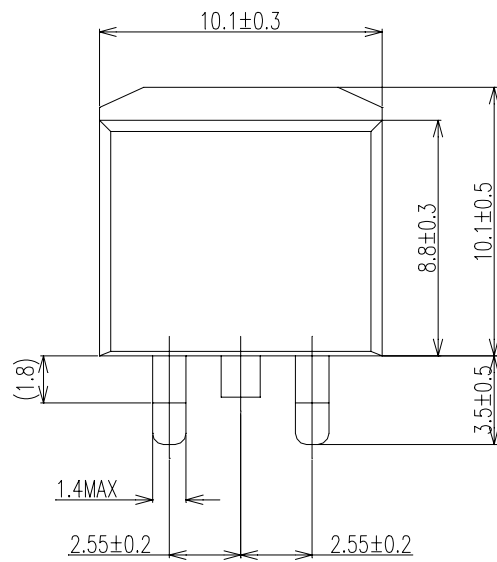
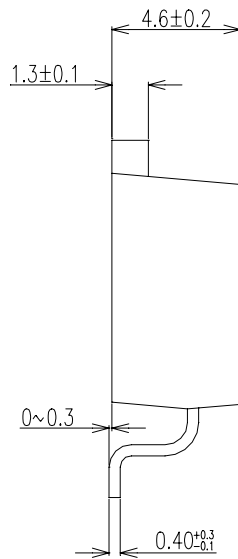
Approx Net Weight: 1.4g

Rating	Symbol	C10T04QH			Unit
Repetitive Peak Reverse Voltage	V _{RRM}	40			V
Repetitive Peak Surge Reverse Voltage	V _{RRSM}	45(pulse width ≤ 1μs duty ≤ 1/50)			V
Average Rectified Output Current	I _O	10	Tc=128°C	50 Hz Full Sine Wave Resistive Load	A
RMS Forward Current	I _{F(RMS)}	11.1			A
Surge Forward Current	I _{FSM}	120	50Hz Full Sine Wave ,1cycle Non-repetitive		A
Operating JunctionTemperature Range	T _{jw}	-40 to +150			°C
Storage Temperature Range	T _{stg}	-40 to +150			°C

Electrical • Thermal Characteristics

Characteristics	Symbol	Conditions	Min.	Typ.	Max.	Unit
Peak Reverse Current	I_{RM}	$T_j = 25^\circ C$, $V_{RM} = V_{RRM}$ per arm	-	-	1	mA
Peak Forward Voltage	V_{FM}	$T_j = 25^\circ C$, $I_{FM} = 5 A$ per arm	-	-	0.61	V
Thermal Resistance	$R_{th(j-c)}$	Junction to Case	-	-	3	$^\circ C / W$

C10T04QH OUTLINE DRAWING (Dimensions in mm)



SOLDERING PAD

