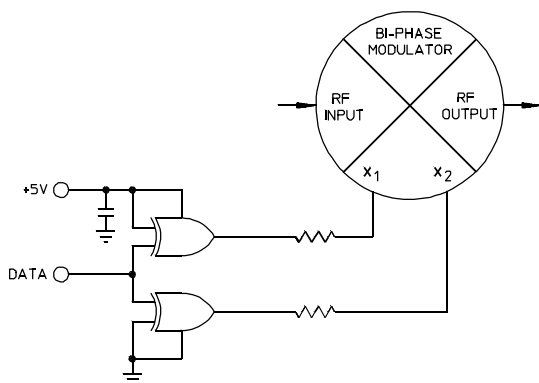


BTG-2B-500

BIPHASE MODULATOR

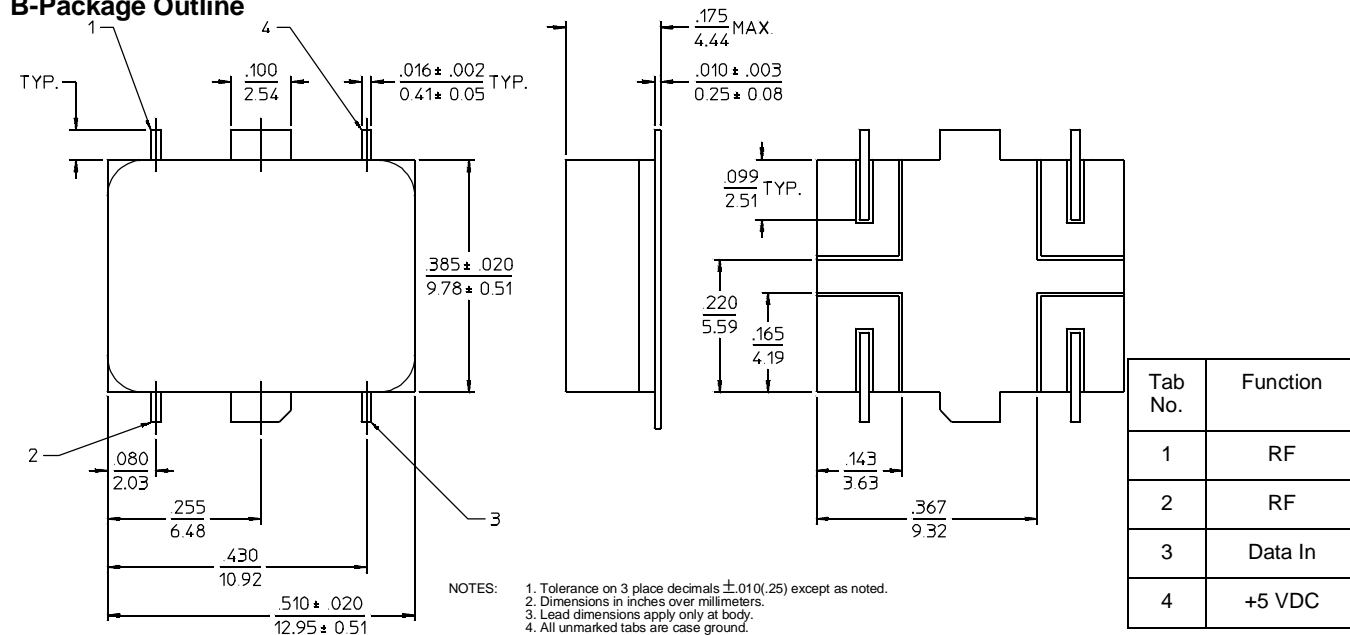
10 to 1000 MHz / TTL Compatible Input / Hi-Rel SMD Package



PRINCIPAL SPECIFICATIONS

| Model Number | Frequency Range, MHz | Insertion Loss, dB | | Amplitude Balance, dB | | Phase Balance, Max. Typ. | | Carrier Suppression, Typ. | VSWR, Max. | Weight, oz.(g), Nom. |
|--------------|----------------------|--------------------|------|-----------------------|------|--------------------------|------|---------------------------|------------|----------------------|
| | | Max. | Typ. | Max. | Typ. | Max. | Typ. | | | |
| BTG-2B-500 | 10 – 500 | 3 | 2 | 0.3 | 0.20 | ±3° | ±1° | – 25 dBc | 2.0:1 | 0.1 (2.8) |
| | 500 – 1000 | 4 | 3 | 0.5 | 0.20 | ±4° | ±2° | | | |

B-Package Outline



General Notes:

1. The BTG-2B-500 Biphaser Modulator covers the frequency range of 10 to 1000 MHz and includes interface circuitry so it may be driven directly from standard TTL using a +5V supply.
2. The BTG-2B-500 is available in a variety of alternative packages, logic circuit types (e.g., ECL) and frequency ranges. Customized versions are available for special frequency bands matched to your special applications.
3. Merrimac Biphaser Modulators cover a variety of frequency bands while providing wide bandwidths suitable for most applications. All units comply with MIL-M-28837 and may be supplied screened for compliance with additional specifications for military and space applications requiring the highest reliability.

GENERAL SPECIFICATIONS

| | |
|---------------------|--------------------------------------|
| Impedance: | 50 Ω nom. |
| RF Input Level: | 0 dBm max. |
| Switching Speed: | 5 nS typ. (50% Control to 90% RF) |
| Data Signal Levels: | TTL compatible |
| Supply Voltage: | +5 VDC @ 25 mA nom |
| Operating Temp: | – 55° to +85°C |

29Apr96