

BMOY 800/900 MHz Series Maximum Performance Yagi

The Black MAXRAD Optimized Yagi (BMOY) 800/900 MHz antenna series consists of three models that cover all 800/900 MHz frequency bands without the need for tuning. Their seamless aluminum construction, with 360 degree welds surrounding the 3/8" elements and a powder coated finish, provide outstanding durability and superior performance in severe weather conditions. The BMOY features a type N termination located at the end of the boom for complete protection against humidity, acid rain or salt in environments located near the ocean. This design ensures the finest electrical connection and enhances the overall antenna performance. The BMOY antennas are supplied with a solid aluminum mounting clamp and stainless steel mounting hardware that allows mounting for horizontal or vertical polarization.

General Specifications for BMOY 800/900 MHz Series

Radiator Material:

3/8" solid 6061-T6 aluminum

Termination:

Type "N" Female

Lightning Protection:

DC grounded

Wind Survival:

250 mph with no ice. It will survive up to 160 mph wind with 0.5" radial ice build-up before the boom yields.

Maximum Mount Pipe Diameter:

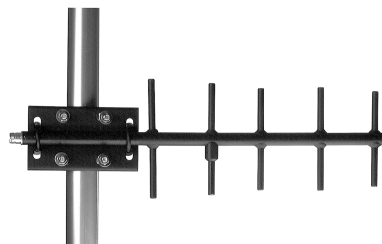
1-5/8"

Maximum Power:

150 watts

Nominal Impedance:

50 Ohms



BMOY8065

Electrical Specifications

BMOY 800/900 MHz Series, Maximum Performance Yagi

Model #	Frequency Range	Gain	Bandwidth @ 1.5:1 VSWR	Horizontal Beamwidth @ 1/2 Power	Vertical Beamwidth @ 1/2 Power	Front to Back Ratio
BMOY8065	806-866 MHz	9 dBd	60 MHz	52°	45°	15 dB
BMOY8245	824-896 MHz	9 dBd	72 MHz	52°	45°	15 dB
BMOY8905	890-960 MHz	9 dBd	70 MHz	52°	45°	15 dB

Mechanical Specifications

BMOY 800/900 MHz Series, Maximum Performance Yagi

Model #	Equivalent Flat Plate Area	Lateral Thrust @ 125 mph Wind	Bending Moment @ 125 mph Wind	Elements	Weight	Mounting Hardware (Included)	Boom Length	Boom Diameter
BMOY8065	.16 sq ft	12.6 lbs	9.5 ft-lbs	5	0.9 lbs	MYK17	20-1/2"	0.75"
BMOY8245	.16 sq ft	12.6 lbs	9.5 ft-lbs	5	0.9 lbs	MYK17	20-1/2"	0.75"
BMOY8905	.16 sq ft	12.6 lbs	9.5 ft-lbs	5	0.9 lbs	MYK17	20-1/2"	0.75"