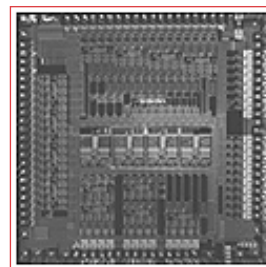




BCM7031RB PRODUCT Brief



HIGH-DEFINITION VIDEO PCI SUBSYSTEM WITH 2D/3D GRAPHICS

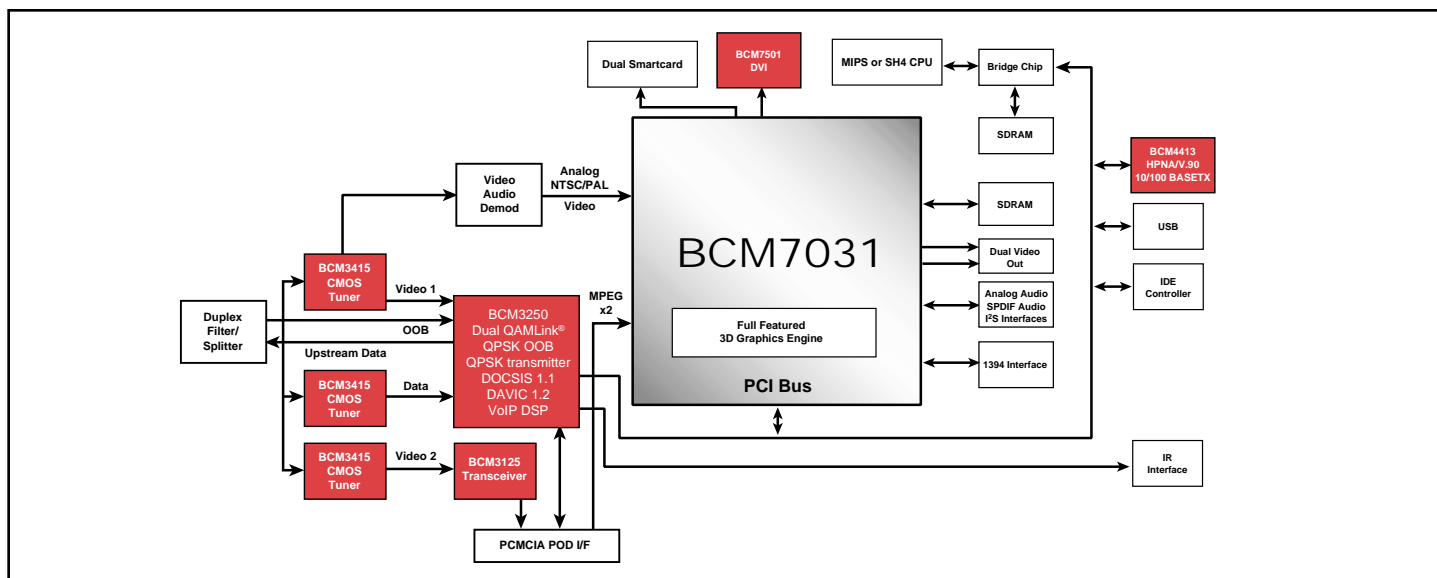
BCM7031 FEATURES

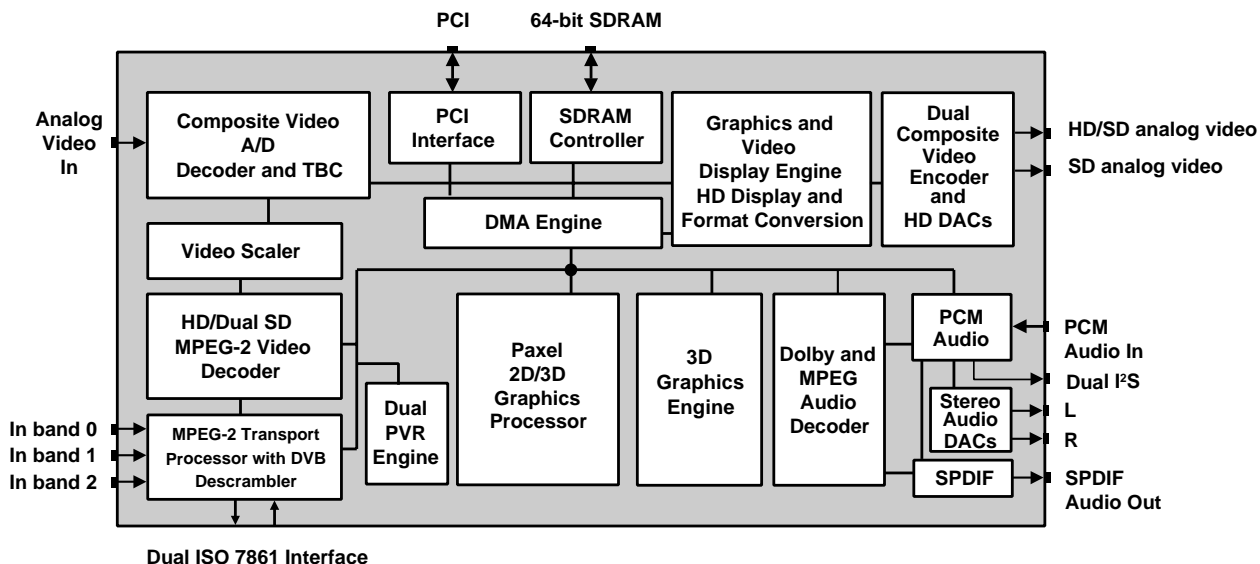
- **ATSC-compliant, All-Format MP@HL MPEG-2 video dual decoder with Personal Video Recording feature**
 - Dual channel standard-definition (SD) decode with simultaneous SD display of each channel content.
 - Single channel high-definition (HD) decode with simultaneous display of both HD and scaled SD content.
 - Simultaneous dual record, dual playback Personal Video Recording (PVR) with encryption.
 - Six on-chip video DACs
- **Dolby Digital (AC-3)/MPEG multichannel audio decoder with SPDIF output**
 - Dual I²S bi-directional audio ports
- **Stereo audio DACs**
- **Fully featured 3D graphics HW accelerator**
- **Advanced 2D/3D-effects graphics engine**
 - Studio-quality text and graphics at HD resolution
 - Supports multiple layers and windows
- **NTSC/PAL analog video decoder**
- **NTSC/PAL/HD video encoder**
- **PCI 2.1 compliant**
- **POD support including DVS 213 DES descrambler**
- **DVB and DC2-compliant transport demux with DVB and DES descramblers**
- **Simultaneous CCIR-656 inputs and outputs**
- **Support for 64 PIDs and 64 section filters**

SUMMARY OF BENEFITS

- **Provides a cost-effective solution for high-definition and standard-definition video and graphics systems common to cable and satellite applications.**
- **PVR capability enables personal viewing and scheduling, Video-On-Demand (VOD), and VCR "trick mode" effects on any video stream.**
 - Encryption ensures copy protection of recorded programming content
- **Includes simultaneous high-definition and standard-definition analog output for watch and record capability.**
- **Advanced 2D-graphics system allows applications such as internet browsers and electronic program guides to deliver studio-quality text and graphics on television monitors.**
- **Full featured 3D-graphics engine allows for multi-player gaming and 3D internet website acceleration.**
- **PCI interface allows for direct connection of cost-effective SuperI/O devices.**
- **High-performance DMA capability can be used for cable modem traffic.**
- **Broadcom-developed device drivers enable rapid-software development cycle.**
- **Supports DVS POD requirements.**
- **PCI interface provides bi-endian support and up to 3 bus masters for maximum system design flexibility.**

BCM7031 Advanced Video, Graphics, and Audio Subsystem





The **BCM7031** Advanced High-Definition, Video-Graphics Subsystem supports the requirements of television and set-top box systems that require high-definition or standard-definition decoding of MPEG-2 streams with simultaneous high-definition and standard-definition outputs. For systems that require only standard-definition output, a reduced-memory mode substantially reduces the amount of memory needed for the video decompressions process. The video decoder also supports multiple stream standard-definition decoding, providing both tiled video and PIP capability.

The **BCM7031** graphics are based on Broadcom's advanced video/graphics technology that allows studio-quality text and graphics to be displayed on television-based systems. The graphics compositing engine allows for many windows of graphics and video to be layered with blending and antialiasing, creating high-quality, rich display capability.

An on-board vector RISC processor provides 2D graphics, antialiased text, and 3D effects.

A MPEG-2 DVB/DC2-compliant transport demux with three transport stream inputs has advanced section filtering capability, DVB descrambler, DES descrambler with ECB/CCB capability,

and two ISO7816 smart card interfaces. The DES descrambler complies with the DVS 213 requirements for the transport stream POD interface.

The transport engine is designed to support personal video recorder (PVR) functions, allowing the set-top box to support VCR-like functions, such as fast forward/reverse, pause, and record. The **BCM7031** supports up to two record and two playback streams simultaneously, with optional 3DES encryption/decryption.

The **BCM7031** decodes both Dolby Digital (AC-3) and MPEG multichannel compressed streams. Audio output is provided over stereo DACs or SPDIF.

A PCM audio engine mixes separate audio streams generated from the MPEG2/Dolby audio decompression circuitry, PCM audio generated from the CPU, or PCM audio input via a baseband audio input. These streams can be resampled and mixed together with volume control.

The **BCM7031** is an ideal solution where maximum system design flexibility and performance is key. Its bi-endian architecture and full DMA capability work with any CPU and PCI system configuration.

Broadcom® and the pulse logo are registered trademarks of Broadcom Corporation and/or its subsidiaries in the United States and certain other countries. **Dolby**® is a registered trademark of of Dolby Laboratories Licensing Corporation.

For more information please contact us at:
Phone: 949-450-8700, FAX: 949-450-8710
Email: info@broadcom.com



Visit our web site at: www.broadcom.com

© 2001 BROADCOM CORPORATION

7031-PB02-R-4.24.01

BROADCOM CORPORATION
16215 Alton Parkway, P.O. Box 57013
Irvine, California 92619-7013