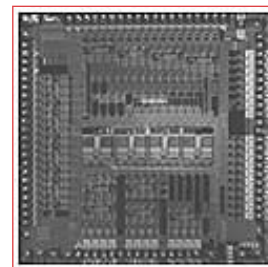




# BCM5700 PRODUCT Brief



## BCM5700 PCI-X 10/100/1000BASE-T CONTROLLER

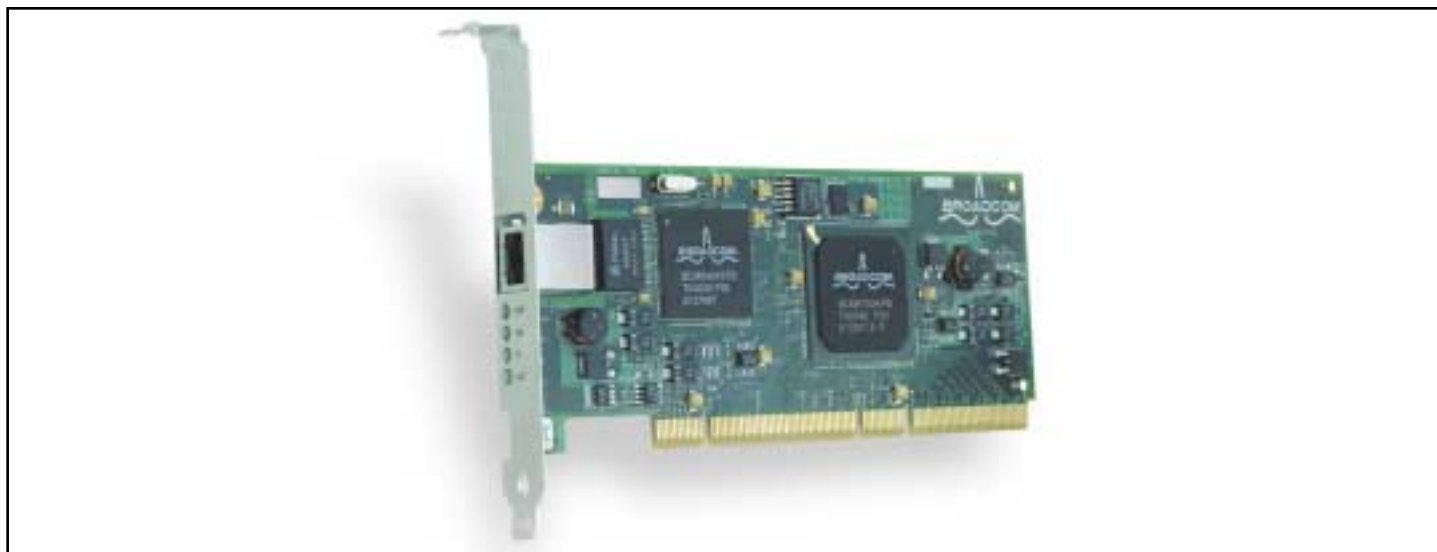
### BCM5700 FEATURES

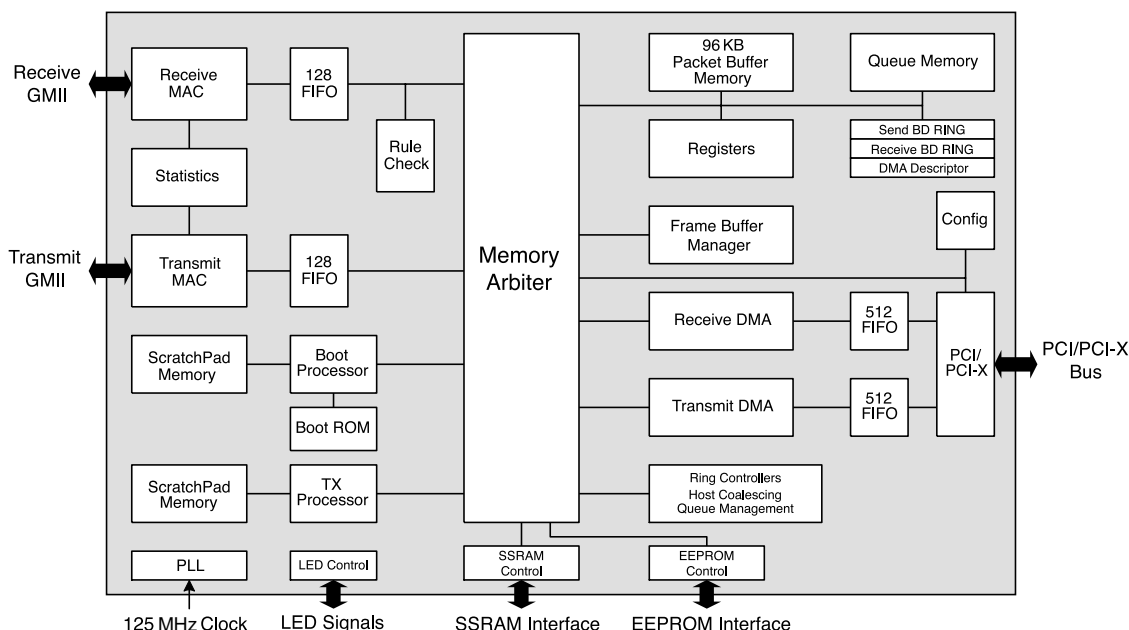
- 10/100/1000 Mbps tri-speed Media Access Controller (MAC) with wire speed performance at all rates
- Support for PCI v2.2 32/64-bit, 33/66 MHz, and PCI-X v1.0 32/64-bit, 66/133 MHz, bus interfaces
- 96 KB ultra deep packet buffer with support for up to 16 MB externally
- Support for IEEE 802.3, 802.3u, 802.3z, and 802.3ab standards
- MII/GMII and TBI (SERDES style) transceiver interfaces
- Advanced CPU offload features include: TCP/UDP/IP Checksum offload, TCP segmentation, 9 KB jumbo frame
- Dual high-speed CPUs
- Microsoft PC99 compliant: support for ACPI ver 1.1a, wake on LAN, PXE version 2.0, and statistics for SNMP MIB II, Ethernet-like MIB, and Ethernet MIB (802.3z, Clause 30)
- Layer 2 priority encoding (802.3p) – up to 16 priority queues
- VLAN tagging (IEEE 802.3p)
- Flow control (IEEE 802.3x)
- Link aggregation (IEEE802.3ad)
- Multiple power modes with programmable low power operation
- Low power design – 3.3 V/1.8 V, 0.18u CMOS
- 5V tolerant PCI I/Os
- 388-pin PBGA package

### SUMMARY OF BENEFITS

- Features wire speed operation at all speeds.
- The BCM5700 is ideal for new high speed Network Interface Cards (NIC) and LAN on Motherboard (LOM) applications, while maintaining backward compatibility with today's networks.
- Support for both the PCI 2.2 and PCI-X standard enables the BCM5700 to run in any PCI-based or PCI-X systems.
- The ultra-deep on-chip packet buffer allows the BCM5700 to continuously transmit and receive at high speeds in systems where the PCI/PCI-X bus is shared with other devices.
- On-chip CPUs perform advanced functions and allow the BCM5700 to evolve with new standards. The CPUs also provide advanced packet parsing capabilities, making the BCM5700 an OSI L4 protocol aware device, providing many advanced features and offloads.
- Advanced offload features promote high throughput, while minimizing host CPU utilization.
- Combined with the BCM5401 and newer Broadcom 10/100/1000BASE-T PHYs, the BCM5700 supports ACPI-compliant Wake on LAN implementations.
- Additional manageability features enable NIC and LOM designs to comply with relevant manageability standards for server and desktop applications.
- Provides low power operation – 0.18u advanced process technology, combined with programmable power management.

BCM5700 10/100/1000 PCI-X NIC Reference Design





The **BCM5700** is a high-performance 10/100/1000BASE-T Ethernet LAN controller optimized for NIC and LOM applications. The **BCM5700** is a highly integrated solution combining 10/100/1000BASE-T IEEE 802.3 compliant Media Access Controller (MAC), PCI and PCI-X bus interfaces, and on-chip buffer memory in a single device. The **BCM5700** is fabricated in a low voltage 1.8V CMOS process, providing a low power system solution. Combine the **BCM5700** with the BCM5401 (or later) single-chip Gigabit Ethernet Transceiver to achieve a complete NIC or LOM solution for 10/100/1000BASE-T Ethernet.

The **BCM5700** includes a 10/100/1000 Mbps Ethernet MAC with full/half-duplex capability at all speeds. The MAC interfaces to the external transceiver via the GMII in 1000BASE-T mode, the MII in 10/100BASE-T mode, and TBI serial interface in 1000BASE-SX/1000BASE-FX mode. Support for the following 802.3 packet tagging functions is featured in the MAC: VLAN tagging, Layer 2 priority encoding, link aggregation, and full-duplex flow control.

The device provides both PCI v2.2 32/64-Bit, 33/66 MHz, and PCI-X v1.0, 133 MHz, host interfaces. The **BCM5700** includes a 96 KB on-chip buffer memory for stand-alone operation, and

**Broadcom®** and the pulse logo are registered trademarks of Broadcom Corporation and/or its subsidiaries in the United States and certain other countries.

For more information please contact us at:  
Phone: 949-450-8700, FAX: 949-450-8710  
Email: [info@broadcom.com](mailto:info@broadcom.com)

optionally supports up to 16 MB of external memory. Dual on-chip high-performance processors enable many custom frame processing features, including TCP segmentation.

## Target Applications of the BCM5700

Network Interface Cards (NIC) designs		LAN on Motherboard (LOM) designs	
SINGLE PORT		SINGLE PORT	
10/100/1000 BASE-T	PCI 2.2 Adapters PCI-X v1.0 Adapters	10/100/1000 BASE-T	PCI 2.2 LOM PCI-X v1.0 LOM
1000 BASE-SX	PCI 2.2 Adapters PCI-X v1.0 Adapters	DUAL PORT	
1000 BASE-LX	PCI 2.2 Adapters PCI-X v1.0 Adapters	10/100/1000 BASE-T	PCI 2.2 LOM PCI-X V1.0 LOM
DUAL PORT			
10/100/1000 BASE-T	PCI 2.2 Adapters PCI-X v1.0 Adapters		

# BCM5700 Operating System

- Microsoft Windows NT 4.0
- Microsoft Windows 2000
- Linux 2.2
- NetWare 4.11, 4.2 and 5.x

The Broadcom logo, featuring a stylized red 'A' shape above the word 'BROADCOM' in bold black capital letters, with a red wavy line underneath.

Visit our web site at: [www.broadcom.com](http://www.broadcom.com)

© 2001 by BROADCOM CORPORATION. All rights reserved.

5700-PB03-R-4.16.01

BROADCOM CORPORATION  
16215 Alton Parkway, P.O. Box 57013  
Irvine, California 92619-7013