



180° PHASE SHIFTER

MODEL 9220-33

Guaranteed Specifications

Parameter	Limits
Frequency	60 \pm 5 MHz
Phase Range	180° Min
Insertion Loss	3 dB Max
Input Power	3 dBm
Bias Control	.5 to 10 Volts
VSWR – Center Frequency	1.5:1 Max
Control Bandwidth	DC to 50 kHz

Note: All Specifications apply in a 50 Ohm system at specified levels at 25°C.

Maximum Ratings

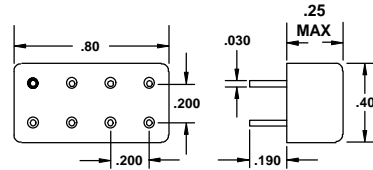
Input Power	10 dBm Max
Control Voltage	12 Volts Max
Temperature Range	0°C to 85°C

Reliability

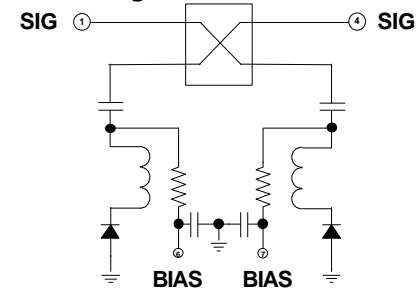
All units are designed and constructed to meet or exceed specifications after exposure to any or all of the following MIL-STD-202 tests which are applicable.

Test	Method	Condition
Temperature Cycle	107G	A
Thermal Cycle	107G	AA
Vibration	204D	A
Solderability	208F	
Terminal Strength	211A	A
Terminal Fatigue	211A	C
Mechanical Shock	213B	C

Outline Drawing



Block Diagram



Case is Signal Ground

Connections

1	2	3	4
5	6	7	8

SIG	1
BIAS	6
BIAS	7
SIG	4
GRND	2,3,5,8

Glass bead on Pin 1 a different color

All characteristics of Tele-Tech products may be modified to meet customer requirements.

P.O. Box 790, Bozeman, Montana 59717
Phone: (406) 586-0291 Fax: (406) 587-0653 E-mail: admin@tele-tech-rf.com