

## Model 917 Miniature In-Line Phase Shifters

**dc to 20.0 GHz**  
**200 Watts**

**Ruggedized 2.92mm Connector**



### Features

- /// **Self Locking** - Internal mechanism eliminates the need for a locking nut. Ideal for phase trimming in densely packaged systems with minimum accessibility.
- /// **Linear** - Provides a linear adjustable phase shift to 20 GHz in a very small in-line coaxial package.

### Specifications

**NOMINAL IMPEDANCE:** 50  $\Omega$

**FREQUENCY RANGE:** dc to 20.0 GHz

**INCREMENTAL PHASE SHIFT:** Adjustable to 225° @ 20 GHz; 100° at 9 GHz.

**RESOLUTION:** 0.5° per turn per GHz, typical  
(Adjustment shaft has 20 turns for full range).

**INSERTION PHASE:** 890° @ 10 GHz (Typical)

**PHASE VS FREQUENCY:** Nominally linear response

**INSERTION LOSS:** 0.8 dB maximum  
(0.5 dB typical @ 20 GHz)

#### MAXIMUM SWR:

Frequency Range (GHz)	SWR
dc - 20	1.5

**POWER RATING:** 200 watts average

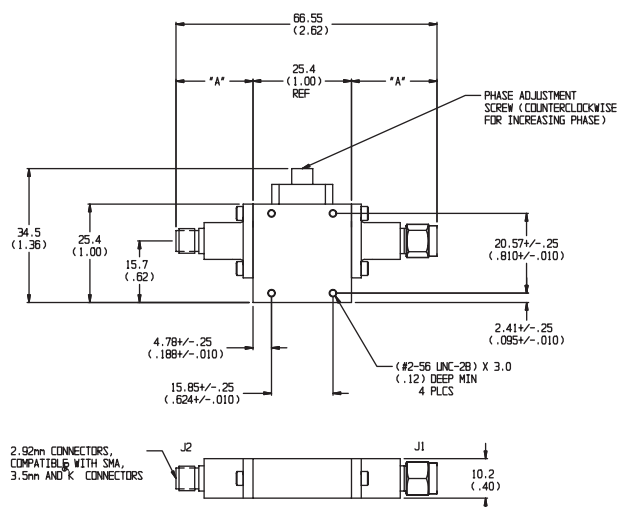
**TEMPERATURE RANGE:** -55°C to 125°C.

**CONNECTOR:** 2.92mm connector compatible with SMA, 3.5mm and K® connector. Available connector options are:

Connector Options	Type/Description
1	2.92mm, Female
2	2.92mm, Male

**WEIGHT:** 45 g (1.6 oz)

**PHYSICAL DIMENSIONS:**



CONN TYPE	DIM A
Female	19.81 (0.78)
Male	21.34 (0.84)

**NOTE:**

1. All dimensions are given in mm (inches) and are nominal  $\pm 0.5$  (0.02), unless otherwise specified.
2. K® is a registered trademark of the Anritsu-Wiltron 2.92 mm connector.

### MODEL NUMBER DESCRIPTION:

**Example:**

**917 - XX**

Basic Model Number

Connector Options\*  
1st digit is J1 side  
2nd digit is J2 side