

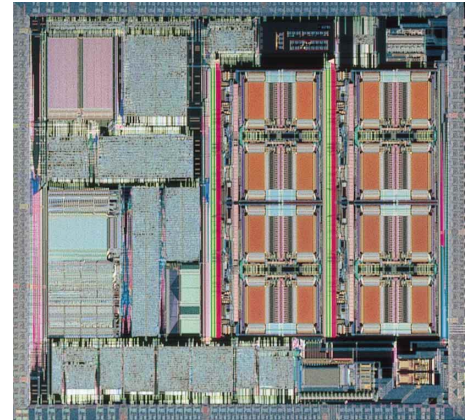
900/H2 Series Product Line of 32-Bit Microcontrollers with Internal ROM

Seamless core 900 Family

Toshiba is now offering the **TMP94CS40AF** product line — internal ROM versions of the 32-bit **900/H2** Series from the **900-Family**. Thanks to its seamless core line, Toshiba provides strong support for customers developing more advanced systems.

Features

- Original high-speed 32-bit CPU core
- Full instruction code compatibility with 16-bit **900**-Series microcontrollers
- High-speed instruction execution (basic instructions: one clock cycle)
- Internal data bus: 32 bits, external data bus: 8/16/32 bits
- Operating frequency: 20 MHz (basic instructions: 50 ns)
Operating frequency: 24 MHz (under development)
- High-speed data transfer function (micro DMA: 5 clock cycles (min)/8 channels)
- 64-KB internal ROM (**TMP94CS40AF**)
- Connectable directly to memory (DRAM controller/2 channels)



Product List

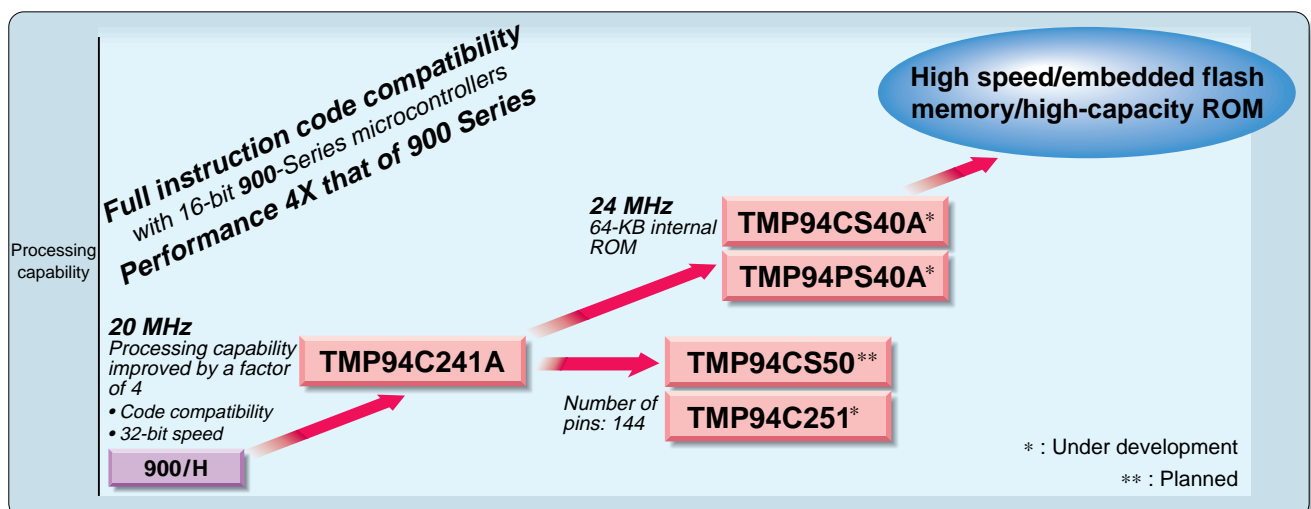
Product name	Function	Embedded ROM (bytes)	Embedded RAM (bytes)	I/O Port	Minimum Instruction Execution Time	Operating Temperature (°C)	Package	Features
★ TMP94C241AF	Timer counters: 16 bits X 4 Timers: 8 bits X 4	—	2K	64	50ns	-20 to 70	QFP160	DA converter: 8 bits X 2 channels
* TMP94CS40AF	Serial interface: 2 channels	64K			50 ns (20MHz) 41.6 ns (24MHz)			24 MHz operation
* TMP94PS40AF	DRAM controller: 2 channels	64K (OTP)						
* TMP94C251F	AD converter: 10 bits X 8 channels Watchdog timer	—			50ns		QFP144	DA converter: 8 bits X 2 channels
** TMP94CS50F	CS/WAIT controller	64K						

★ : Sample under shipment * : Under development ** : Planned

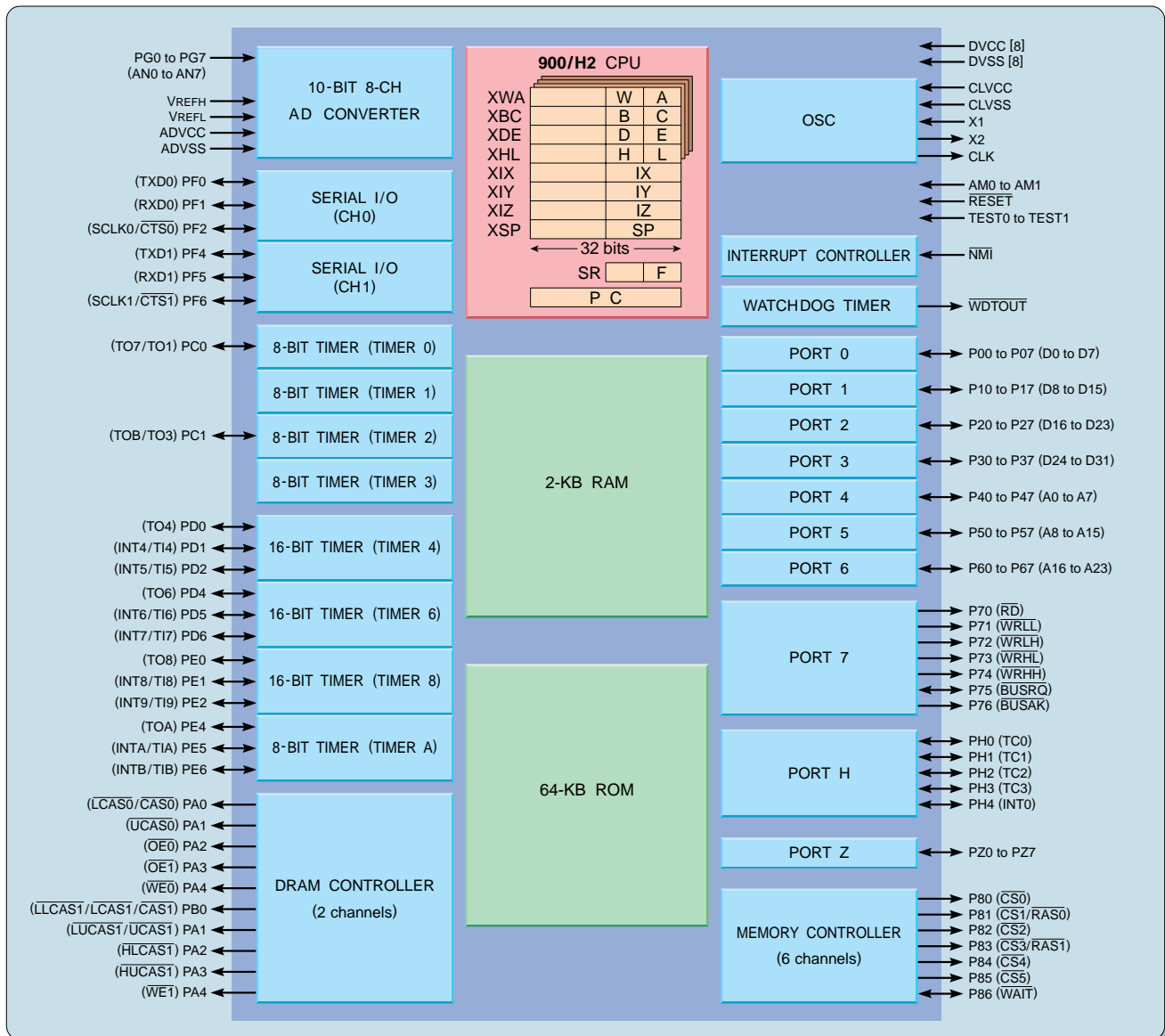
900 Series: Seamless High-Performance Upgrade

Package and ROM product lines provide a timely response to customer needs

900/H2 Product Road Map



TMP94CS40AF Block Diagram

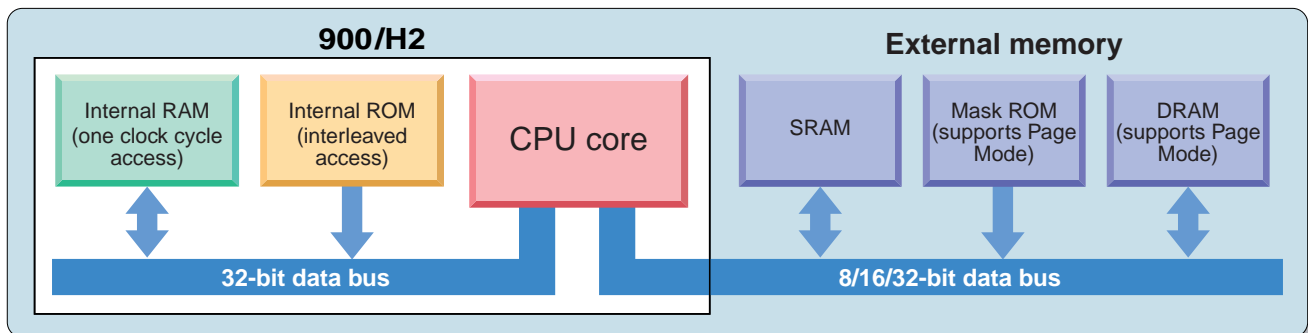


TMP94CS40AF Specifications

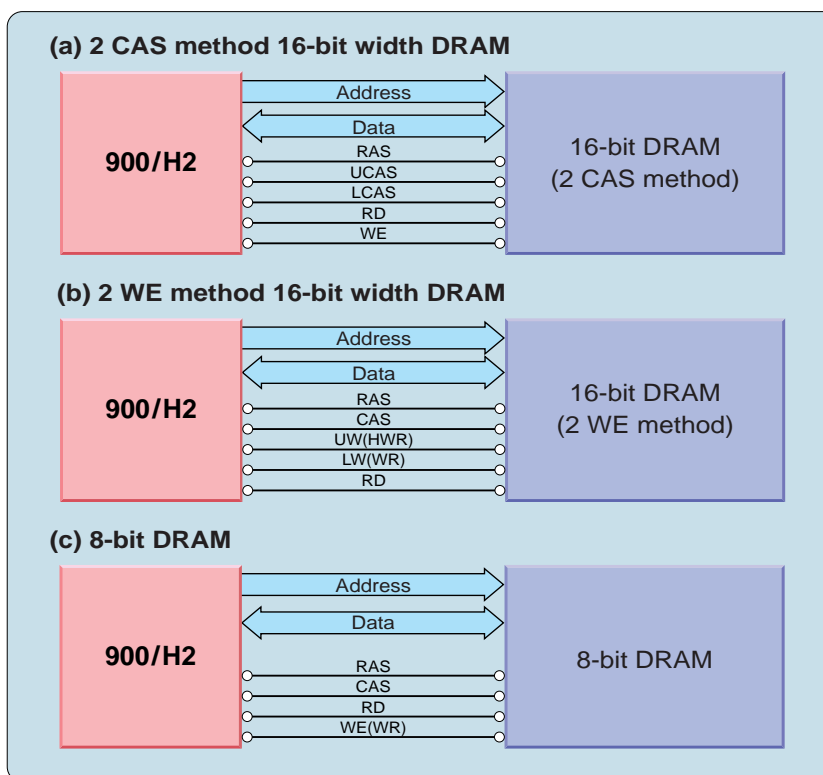
- Original high-speed 32-bit CPU core (**900/H2 CPU**)
 - Full instruction code compatibility with **TLCS-900**, **TLCS-900/L** and **TLCS-900/H** Series
 - 16-MB linear address space
 - General-purpose registers and register banks
 - Internal data bus width: 32 bits
 - Micro DMA: 8 channels
- Minimum instruction execution time: 50 ns (20 MHz)
- Internal ROM: 64 KB <TMP94CS40A>
(Internal PROM: 64 KB <TMP94PS40A>)
Internal RAM: 2 KB (32 bits, one clock cycle access)
- External memory expansion
 - Expandable to 16 MB (shared program/data)
 - External 8/16/32-bit data bus connectable simultaneously to 8-, 16- and 32-bit devices
 - External start-up data bus width select pin (8/16/32-bit bus selectable)
- Memory controller
 - Chip Select/WAIT/bus width control: 6 blocks
- DRAM controller: 2 channels
 - Direct interface: 8/16/32-bit data bus
 - High-speed page mode supported
- 8-bit timer: 4 channels
- 16-bit timer: 4 channels
- Serial interface: 2 channels
- 10-bit AD converter: 8 channels
- Watchdog timer
- Interrupt function
 - Internal I/O: 18
 - External pins: 10
- 5 V/20 MHz (10 MHz input externally)
- 160-pin mini-flat package

Maximizes Performance of a Wide Range of Memory Devices

The **900/H2** Series can be directly connected to a wide range of external memory devices without the need for external circuits. The internal memory is connected via a 32-bit data bus. Internal RAM can be accessed in one clock cycle.



Improved DRAM Control Function



- Direct connection to a wide range of DRAM devices is possible.
- Because the CPU and the memory refresh are asynchronous, access to non-DRAM memory devices does not degrade performance.

Enhanced High-Speed Data Transfer Function (micro DMA)

The **900/H2** Series incorporates high-speed data transfer — as performed by a DMAC (direct memory access controller) — as a standard function.

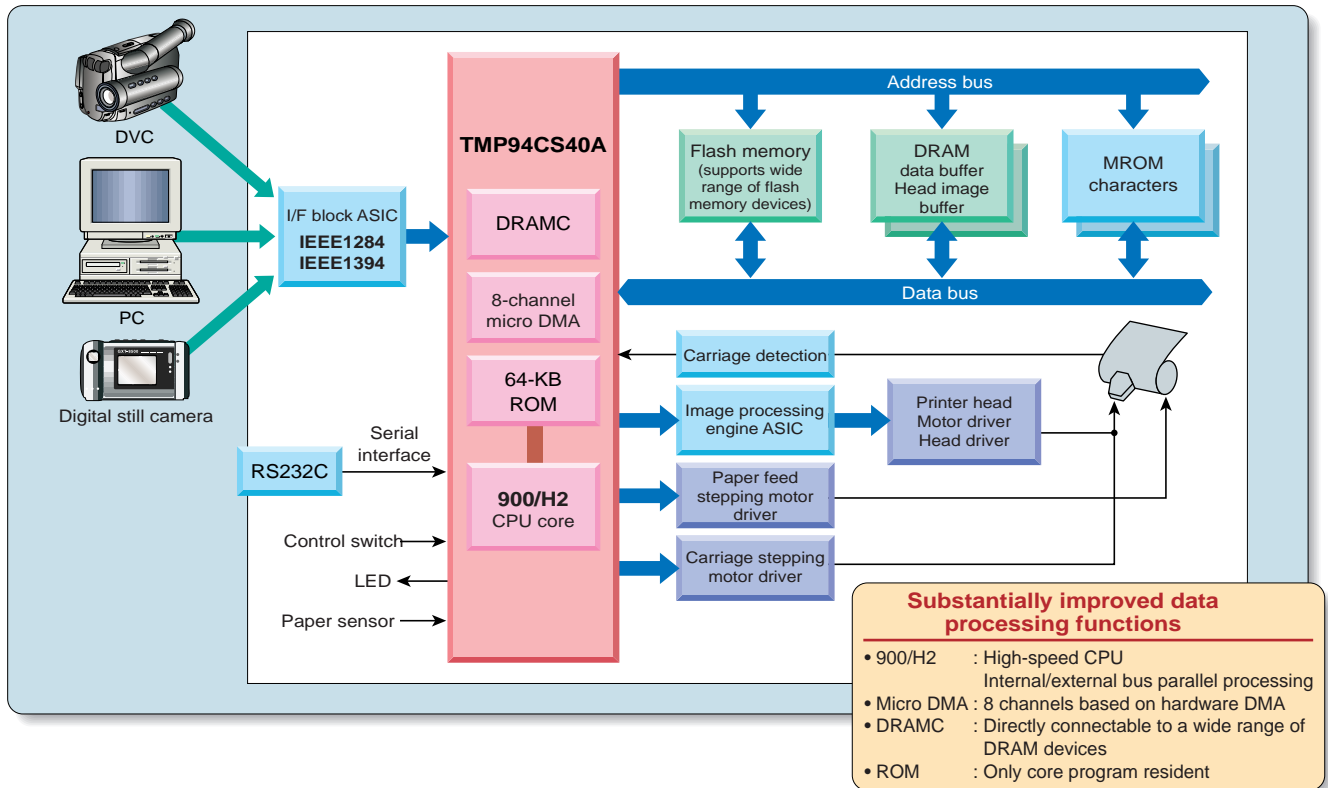
Function and Performance Comparison

Parameter	900, 900/L Series	900/H, 900/L1 Series	900/H2 Series
Number of channels	4 channels	4 channels	8 channels
Minimum transfer time	1600 ns/2 bytes	640 ns/2 bytes	250 ns/4 bytes
Start-up sources	Interrupt	Interrupt and software trigger	Interrupt and software trigger
Burst Mode	No	No	Yes
Transfer modes	I/O → memory, Memory → I/O	I/O → memory, Memory → I/O	I/O → memory, Memory → I/O, Memory → memory

Support for Function Upgrades to Advanced Systems

Application example for printer

The following depicts a system for the efficient processing of data received via a high-speed communications interface; in this case, a system to print the output from multimedia equipment directly.

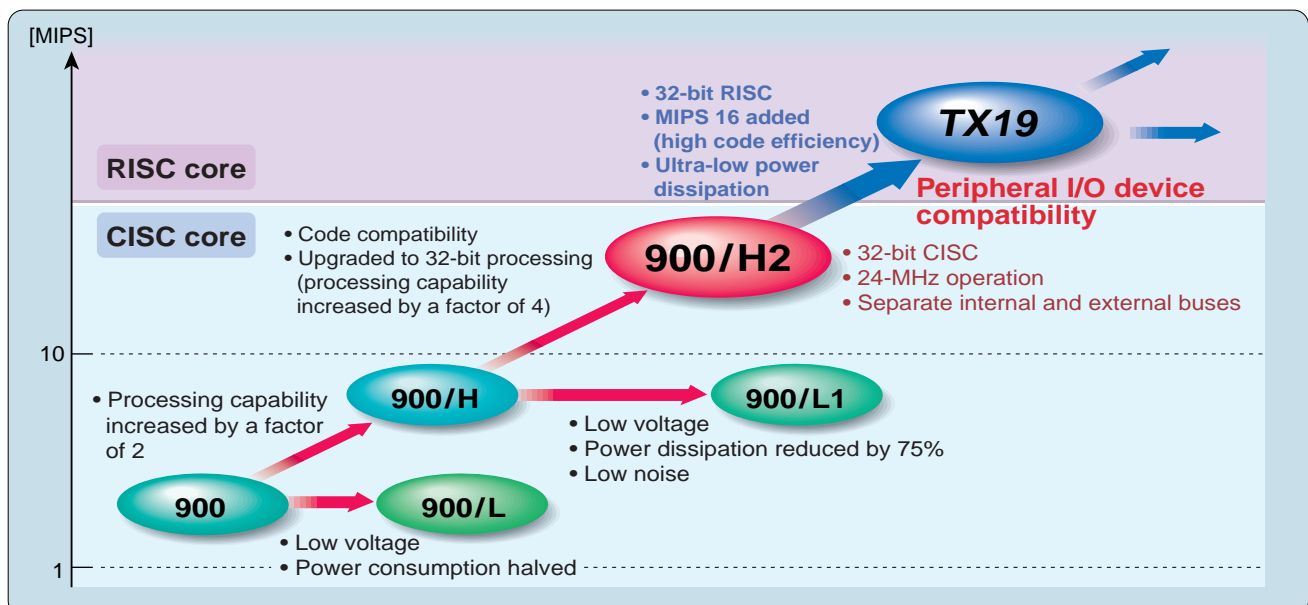


Designed to Allow Smooth Migration to the TX Series



The numerous peripheral I/O devices that have been proven to work with the 900 Family are also compatible with the TX System RISC family. Toshiba's solutions for more advanced system performance make effective use of existing resources.

Toshiba Microcontroller Road Map



900-Series CPU Core Enhances Performance of Advanced Embedded Systems

Conditions required for embedded application IP

1. Compact core

- Custom instructions written specially for embedded applications, optimized circuit structure
- Totally original architecture designed for efficient use of C language code
 - ➔ Substantial improvement in C language code generation efficiency (code size can be as small as 1.2× equivalent assembly code)
 - ➔ Significant improvement in program efficiency (especially for programs larger than 64 KB)

2. Real-time response

- Multi-bank system
 - ➔ Substantial improvement in interrupt response speed allows system to operate at maximum efficiency.
 - ➔ Amount of program code can also be reduced.
- High-speed data transfer function (micro DMA)
 - ➔ Supports high-speed data transfer (equivalent to hardware DMA) as a standard function.
 - ➔ 900/H2 core has eight channels.

3. Line of products supporting advanced user systems

- Seamless core product line
 - ➔ 16-bit core family and 32-bit core 900/H2 offer full instruction code compatibility.
 - ➔ Common development environment for 16/32-bit systems enables development system to respond swiftly to market changes.
- Fully developed memory support
 - ➔ DRAMC can respond flexibly to system demands and memory market trends.

CPU Core Performance

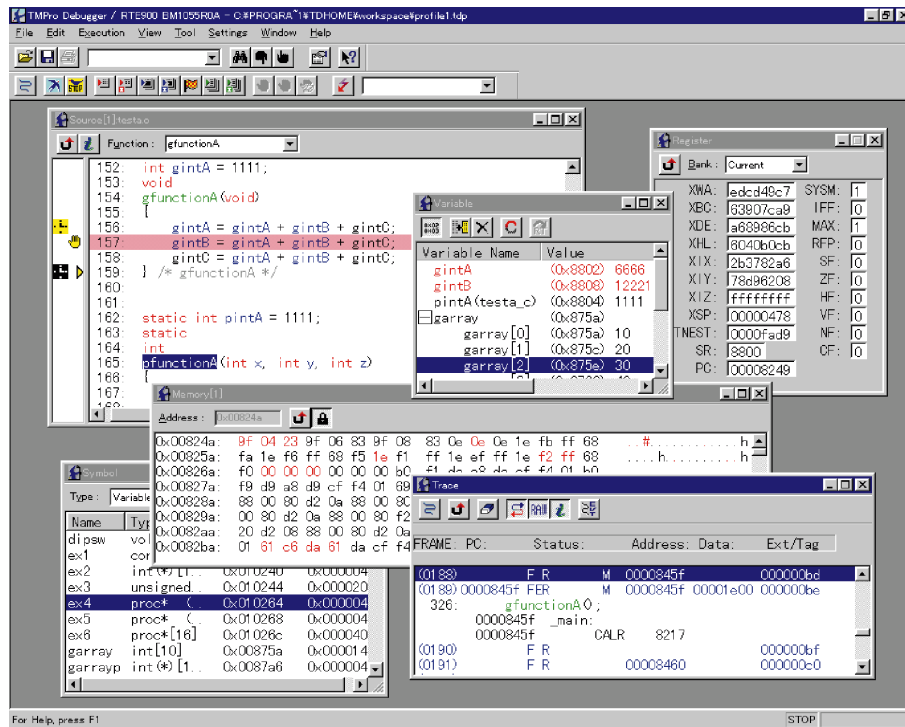
<Instruction Execution Time Comparison>

Unit: ns

Instruction	Operand Size		
	8 bits	16 bits	32 bits
• Data transfer 1 LD reg, reg	50 160 ← Current products ← 900/H2 series	50 160 ← Current products ← 900/H2 series	50 160 ← Current products ← 900/H2 series
• Data transfer 2 LD reg, mem	100 320	100 320	100 480
• Arithmetic operation ADD reg, imm	50 240	50 320	50 480
• Bit processing SET imm, reg	50 240	50 240	
• Jump JR disp8	100 400		

Multifunction Multi-Window Debugger Revolutionizes Development Environments

- Operates with Windows®95 and Windows NT®4.0. Debugging environment is completely new.
- Advanced operation offers real-time response, avoiding interruptions in program development.
- Profile function simplifies complex environment settings.
- Fully developed on-line help function allows effective use of the wide range of functions.



**Toshiba America
Electronic Components, Inc.****Headquarters-Irvine, CA**

9775 Toledo Way, Irvine,
CA 92718, U.S.A.
Tel: (714)455-2000 Fax: (714)859-3963

Altamonte Springs, FL(Orland)

600 S. North Lake Blvd., Suite 250,
Altamonte Springs, FL 32701, U.S.A.
Tel: (407)332-0966 Fax: (407)339-3777

Deerfield, IL(Chicago)

One Pkwy., North, Suite 500, Deerfield,
IL 60015-2547, U.S.A.
Tel: (847)945-1500 Fax: (847)945-1044

Denver, CO

8400 E. Prentice Englewood, CO 80111, U.S.A.
Tel: (303)220-9848 Fax: (303)220-9856

Edison, NJ

2035 Lincoln Hwy. Ste. #3000, Edison
NJ 08817, U.S.A.
Tel: (908)248-8070 Fax: (908)248-8030

Irvine, CA

2 Venture Plaza, Suite 500, Irvine,
CA 92718, U.S.A.
Tel: (714)453-0224 Fax: (714)453-0125

Microelectronics Center-Sunnyvale, CA

1220 Midas Way, Sunnyvale,
CA 94088-3509, U.S.A.
Tel: (408)739-0560 Fax: (408)746-0577

Norcross, GA(Atlanta)

655 Engineering Dr. #160, Norcross,
GA 30092, U.S.A.
Tel: (404)368-0203 Fax: (404)368-0075

Richardson, TX(Dallas)

777 East Campbell Rd., Suite 650, Richardson,
TX 75081, U.S.A.
Tel: (214)480-0470 Fax: (214)235-4114

Wakefield, MA(Boston)

401 Edgewater Place, Suite #360, Wakefield,
Essex, MA 01880-6229, U.S.A.
Tel: (617)224-0074 Fax: (617)224-1095

San Jose Engineering Center, CA

1060 Rincon Circle, San Jose,
CA 95131, U.S.A.
Tel: (408)456-8900 Fax: (408)456-8910

**Toshiba Electronics
Europe GmbH****Düsseldorf Head Office**

Hansaallee 181, D-40549 Düsseldorf
Germany
Tel: (0211)5296-0 Fax: (0211)5296-400

Stuttgart Office

Buro Stuttgart, Eltinger Str.
61, D-71229 Leonberg, Germany
Tel: (07152)6045-0 Fax: (07152)6045-45

München Office

Büro München Hofmannstrasse 52,
D-81378, München, Germany
Tel: (089)748595-0 Fax: (089)748595-42

Berlin Office

Buro Berlin, Alt-Moabit 96B,
D-10559, Berlin, Germany
Tel: (030)-3999000 Fax: (030)-3999017

Toshiba Electronics France SARL

Immeuble Robert Schumann 3 Rue de Rome,
F-93561, Rosny-Sous-Bois, Cedex, France
Tel: (1)48-12-48-12 Fax: (1)48-94-51-15

Toshiba Electronics Italiana S.R.L.

Centro Direzionale Colleoni
Palazzo Perseo Ingr. 2-Piano 6,
Via Paracelso n.12,
1-20041 Agrate Brianza Milan, Italy
Tel: (039)68701 Fax: (039)6870205

Toshiba Electronics España, S.A.

Parque Empresarial San Fernando Edificio Europa,
1ª Planta, ES-28831 Madrid, Spain
Tel: (91)660-6700 Fax: (91)660-6799

Toshiba Electronics(UK) Limited

Riverside Way, Camberley Surrey,
GU15 3YA, U.K.
Tel: (01276)69-4600 Fax: (01276)69-4800

Toshiba Electronics Scandinavia AB

Gustavslundsvägen 12, 2nd Floor
S-161 15 Bromma, Sweden
Tel: (08)704-0900 Fax: (08)80-8459

**Toshiba Electronics Asia
(Singapore) Pte. Ltd.****Singapore Head Office**

460 Alexandra Rd., #21-00 PSA Bldg.,
Singapore 0511
Tel: (278)5252 Fax: (271)5155, (270)6056

Bangkok Office

135 Moo 5 Bangkadi Industrial Park, Tivanon Rd.,
Bangkadi Amphur Muang Pathumthani 12000,
Thailand
Tel: (2)501-1635 Fax: (2)501-1638

**Toshiba Electronics Trading
(Malaysia) Sdn. Bhd.****Kuala Lumpur Head Office**

Suite W1203, Wisma Consplant, No.2,
Jalan SS 16/4, Subang Jaya, 47500 Petaling Jaya,
Selangor Darul Ehsan, Malaysia
Tel: (3)731-6311 Fax: (3)731-6307

Penang Office

Suite 13-1, 13th Floor, Menard Penang Garden,
42-A, Jalan Sultan Ahmad Shah,
100 50 Penang, Malaysia
Tel: 4-226-8523 Fax: 4-226-8515

Toshiba Electronics Asia, Ltd.**Hong Kong Head Office**

Level 11, Top Glory Insurance Building,
Grand Century Place,
No.193, Prince Edward Road West,
Mong Kok, Kowloon, Hong Kong
Tel: 2375-6111 Fax: 2375-0969

Seoul Branch

14/F, KEC B/D, 257-7 Yangjae-dong,
Seocho-ku, Seoul, Korea
Tel: (02)589-4334 Fax: (02)589-4302

Seoul Branch, Gumi Office

6/F, Ssangyong Investment Securities B/D,
56 Songju-Dong, Gumi City
Kyeongbuk, Korea
Tel: (0645)456-7613-6 Fax: (0546)456-7617

Shenzhen Office

Rm 3010-3012, Shun Hing Square,
Di Wang Commercial Centre,
333 Shennan Road East,
Shenzhen, China, 518008
Tel: (0755)246-1582 Fax: (0755)246-1581

Shanghai Office

RM2612 26F, Rui Jin Bldg., 205 Mao Ming
South Rd., Shanghai, China
Tel: (021)64723077 Fax: (021)64727028

Tsurong Xiamen Xiangyu Trading Co., Ltd.

8N, Xiamen Sez Bonded Goods Market Building,
Xiamen, Fujian, China
Tel: (0592)562-3798 Fax: (0592)562-3799

Beijing Office

Rm 714, Beijing Fortune Building,
No.5 Dong San Huan Bei-Lu, Chao Yang District,
Beijing, China, 10004
Tel: (010)6595-8795 Fax: (010)6591-9346

**Toshiba Electronics
Taiwan Corporation****Taipei Head Office**

17F, Union Enterprise Plaza Bldg. 109
Min Sheng East Rd., Section 3, 0446 Taipei,
Taiwan R.O.C.
Tel: (02)514-9988 Fax: (02)514-7892

Kaohsiung Office

16F-A, Chung-Cheng Bldg., Chung-Cheng 3Rd.,
80027, Kaohsiung, Taiwan R.O.C.
Tel: (07)222-0826 Fax: (07)223-0046

**Toshiba Display Devices
(Thailand) Co., Ltd.**

142 Moo 5, Bangkadi Industrial Park,
Tivanon Rd., Pathumthani 12000, Thailand
Tel: (2)501-1200 Fax: (2)501-1209

The information contained herein is subject to change without notice.

The information contained herein is presented only as a guide for the applications of our products.
No responsibility is assumed by TOSHIBA for any infringements of patents or other rights of the third parties which may result from its use. No license is granted by implication or otherwise under any patent or patent rights of TOSHIBA or others.

TOSHIBA is continually working to improve the quality and the reliability of its products. Nevertheless, semiconductor devices in general can malfunction or fail due to their inherent electrical sensitivity and vulnerability to physical stress. It is the responsibility of the buyer, when utilizing TOSHIBA products, to observe standards of safety, and to avoid situations in which a malfunction or failure of a TOSHIBA product could cause loss of human life, bodily injury or damage to property. In developing your designs, please ensure that TOSHIBA products are used within specified operating ranges as set forth in the most recent products specifications. Also, please keep in mind the precautions and conditions set forth in the TOSHIBA Semiconductor Reliability Handbook.

The products described in this document are subject to foreign exchange and foreign trade control laws.