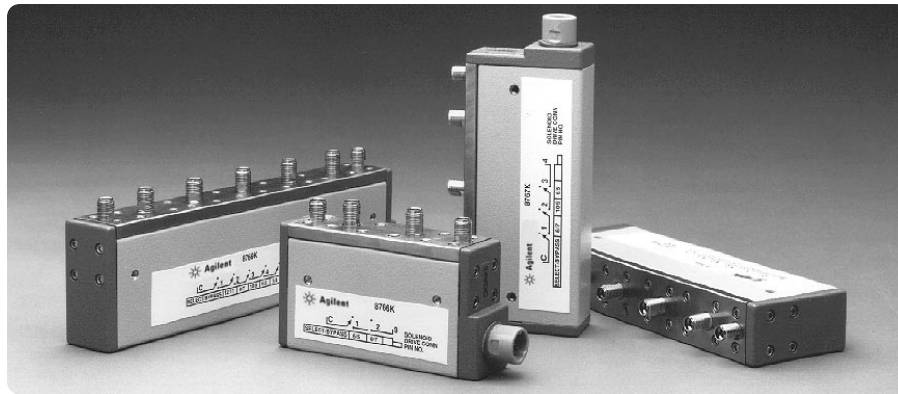


Agilent 8766/7/8/9K

Microwave Single-Pole Multi-Throw Switches

Product Overview



dc to 18, 26.5 GHz

Features and description

- Exceptional reliability, long life (5,000,000 cycles minimum)
- Excellent repeatability
- Compact
- Easy GPIB implementation for ATE applications
- Single-pole, multiple-throw models available:
 - three-throw (8766K)
 - four-throw (8767K)
 - five-throw (8768K)
 - six-throw (8769K)

This Agilent Technologies family of single-pole, multiple-throw switches utilizes the same proven technology as the well known Agilent 849X family of step attenuators. These products offer the same rugged reliability, excellent repeatability (typically 0.01 dB to 18 GHz and 0.05 dB to 26.5 GHz), long life (greater than 5 million switching cycles), compactness, and broadband performance as the 849X family. Each product consists of 2 to 5 solenoid driven switching sections connected in series. The solenoid armatures are held in place with permanent magnets able to withstand shocks over 10 g's.

The sections switch within 20 milliseconds, including contact settling time, which is of importance for automatic test applications. The switches include self-interrupting contacts which minimize power consumption and simplify the driver circuit design (figure 1). Each model is available with a wide range of solenoid voltage choices (24 volts, standard, or optionally 5 or 15 volts) to match your product or system's requirements.

Section switching

Figure 1 shows one switching section schematic. Each section utilizes one solenoid with dual coil windings, one coil to switch in the RF connector, and one coil to switch in the thru line.

With a positive voltage applied to the common pin, the state (RF connector or thru line) of a particular section is determined by connecting its RF connector pin or thru pin to a negative voltage or ground. Tables 1 through 4 define the pin assignments for the different switches.

As a section is switched, the internal contacts of the activated coil open, thus shutting off current flow. At the same time, the internal contacts for the other coil close so that it can be activated when desired. Figure 1 shows a section that has been switched to the RF connector position (note the closed thru line coil contact). The switching is "break-before-make" type, thus a momentary interruption of the RF signal occurs at switching.

Although all sections can be switched simultaneously, the attenuator drive must not allow both pins of the same section (e.g., section 1, pins 5 and 6) to be activated concurrently, or else that section would cycle rapidly. All terminals are "floating," so bipolar or unipolar power supplies may be used.



Agilent Technologies

Typical driver circuit

Figure 1 shows an economical TTL compatible driver circuit for a single switching section utilizing an IC relay driver and an inverter. A TTL "HI" input to the driver switches in the RF connector, while a "LO" will activate the thru line for that section. This provides a complementary driver for the section which assures that only one solenoid of the pair is activated at a time. Diode protection is required to protect the IC from the solenoid voltage flyback.

Switch position can be indicated remotely by utilizing the open and closed states of the internal coil contacts. Figure 1 displays two indicator circuits, one providing a TTL output and one that activates an LED. These circuits will output a TTL "HI" (LED lamp "ON") if the RF connector is in the RF circuit, and will output a TTL "LO" (LED lamp "OFF") if the thru line is in the RF circuit. Since current is drawn through the coil for these circuits, inadvertent switching is prevented by limiting the current to 5 mA.

Agilent assumes no responsibility for the use of any circuits described herein and makes no representation or warranties, express or implied, that such circuits are free from patent infringement.

GPIO attenuator/switch driver

Employing programmable Agilent step attenuators and switches in an automatic test system becomes an easy task when the Agilent 11713A or 87130A attenuator/switch driver is specified into the system. The 11713A has all of the necessary features to provide GPIO control of up to ten switching sections of the 8766/7/8/9 series switches (e.g., five 8766s, two 8769s, etc.).

The 11713A includes an integral power supply (with short circuit protection) that can simultaneously provide 125 milliamps at 24 volts to all contacts for control of the attenuators and switches, so no external power supply is needed. Each 11713A is provided with two (2) plug-in drive cables for the programmable switches to simplify connection to the driver.

The 11713A also features convenient front panel keys so the user can manually activate the individual switch sections when in the "local" mode. Switching time for the drivers is less than 10 milliseconds.

The 87130A is a 3.5 inch high, full width system II attenuator/switch driver capable of driving up to 248 bistatic electromechanical switches or attenuator sections. The 87130A is controlled over GPIO via standard commands for programmable instruments (SCPI) commands. The 87130A has been designed for use in both ATE switching systems and computer controlled bench top applications.

More configuration details are available on the Agilent 11713A and 87130A in literature number 5963-2038E.

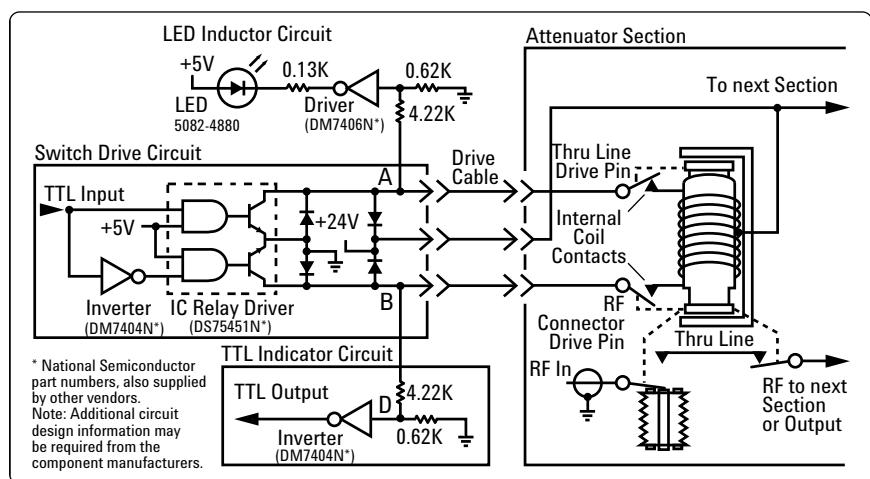


Figure 1

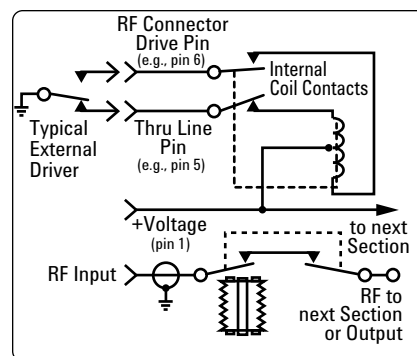


Figure 2

Isolation and insertion loss

Isolation and insertion loss vary with frequency and depend on the port selected, as shown in the chart and tables below. The input connector “C” is always defined as the connector at the opposite end of the switch from the dc drive cable.

The output ports are numbered sequentially from the input connector. For example, if an 8768K is being used, use the 8768K table to read isolation to each port. If port three (the third connector from the input) is selected, the isolation to ports 1 and 2 will follow curve A. Isolation to port 4 will follow curve B and isolation to port 5 will follow curve C. Reading from figure 3 at 8 GHz, the worst case isolation to ports 1 and 2 will be 30 dB; to port 4, 45 dB; and to port 5, 65 dB. Note that in selecting ports 1 or 2, isolation to disconnected ports can be varied by choosing the position of each section to “thru” or “on.” The important thing to note is that, depending on the user’s application, port assignments can be important to optimize performance at higher frequencies.

All isolation tables refer to figure 3.

Specifications

Frequency range: dc to 26.5 GHz all models or dc to 18 GHz for Option 876xK-002 (SMA connectors)

Maximum SW

| Frequency (GHz): | dc to 8 | 8 to 12.4 | 12.4 to 18 | 18 to 26.5 |
|------------------|---------|-----------|------------|------------|
| 8766/7/8K | 1.3 | 1.5 | 1.6 | 1.8 |
| 8769K | 1.3 | 1.55 | 1.8 | 2.05 |

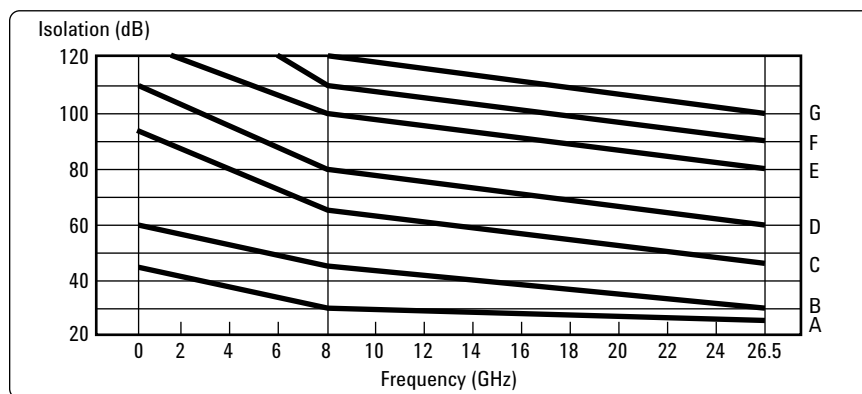


Figure 3. Isolation curves

Table 1. Agilent 8766K with switch profile and connector and pin assignments

| Port selected | X = Activated viking cable pin/wire # and color of ribbon pin # () | | Section status | | Isolation curve (see table 3) for port # | | |
|---------------|---|---------------------------------------|----------------|-----|--|---|---|
| | Section 1 | Section 2 | 1 | 2 | 1 | 2 | 3 |
| 1 | 6 (2) 5 (13) YEL VIO Conn. Thru | 8 (5) 7 (11) GRN VLK Conn. Thru | | | | | |
| | X | X | On | On | — | B | D |
| | X | X | On | Off | — | C | B |
| 2 | X | X | Off | On | A | — | B |
| 3 | X | X | Off | Off | A | A | — |

Note: Red wire, pin(1) of viking cable, or brown wire, pin(6) of ribbon cable must be connected to + 24 voc.

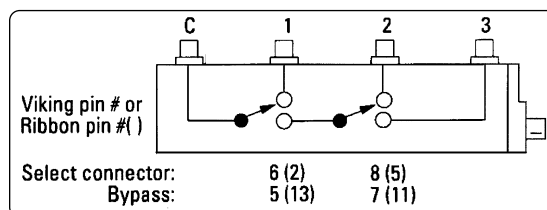
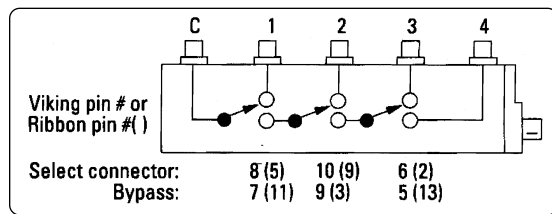


Table 2. Agilent 8767K with switch profile and connector and pin assignments

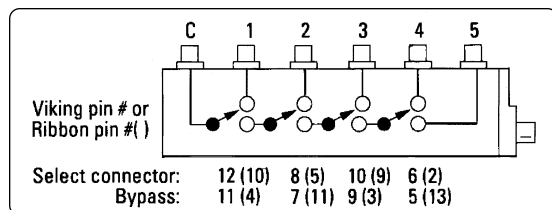
| Port selected | X = Activated viking cable pin/wire # and color or ribbon pin # () | | | | | | Section status | | | | Isolation curve (see table 3) for port # | | | |
|---------------|--|--------|-----------|-------|-----------|--------|----------------|-----|-----|--|---|---|---|---|
| | Section 1 | | Section 2 | | Section 3 | | 1 | 2 | 3 | | 1 | 2 | 3 | 4 |
| 1 | 8 (5) | 7 (11) | 10 (9) | 9 (3) | 6 (2) | 5 (13) | | | | | | | | |
| | GRN | BLK | BLU | ORN | YEL | V/0 | | | | | | | | |
| | Conn. | Thru | Conn. | Thru | Conn. | Thru | | | | | | | | |
| | X | | X | | X | | On | On | On | | — | B | D | E |
| 2 | X | | X | | X | | On | On | Off | | — | B | E | D |
| | X | | | X | X | | On | Off | On | | — | C | B | C |
| | X | | | X | X | | On | Off | Off | | — | C | C | B |
| | | | | | | | | | | | | | | |
| 3 | X | | X | | X | | Off | On | On | | A | — | B | C |
| | X | | X | | X | | Off | On | Off | | A | — | C | B |
| 4 | X | | X | | X | | Off | Off | On | | A | A | — | A |
| | X | | X | | X | | Off | Off | Off | | A | A | A | — |



Note: Red wire, pin(1) of viking cable, or brown wire, pin(6) of ribbon cable must be connected to + 24 voc.

Table 3. Agilent 8768K with switch profile and connector and pin assignments

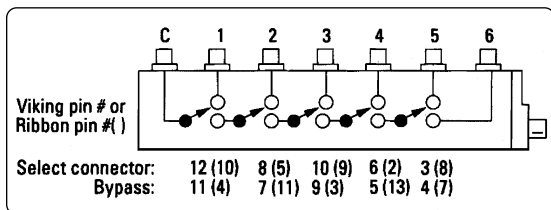
| Port selected | X = Activated viking cable pin/wire # and color or ribbon pin # () | | | | | | | | Section status | | | | Isolation curve for port # | | | | |
|---------------|--|--------|-----------|--------|-----------|-------|-----------|--------|----------------|-----|-----|-----|----------------------------|---|---|---|---|
| | Section 1 | | Section 2 | | Section 3 | | Section 4 | | 1 | 2 | 3 | 4 | 1 | 2 | 3 | 4 | 5 |
| 1 | 12 (10) | 11 (4) | 8 (5) | 7 (11) | 10 (9) | 9 (3) | 6 (2) | 5 (13) | | | | | | | | | |
| | WHT | BRN | GRN | BLK | BLU | ORN | YEL | VIO | | | | | | | | | |
| | Conn. | Thru | Conn. | Thru | Conn. | Thru | Conn. | Thru | | | | | | | | | |
| | X | | X | | X | | X | | On | On | On | On | — | B | D | E | F |
| 2 | X | | X | | X | | X | | On | On | Off | On | — | B | E | D | E |
| | X | | | X | X | | X | | On | Off | On | On | — | C | B | D | E |
| | X | | | X | X | | X | | On | Off | Off | On | — | C | C | B | C |
| | | | | | | | | | | | | | | | | | |
| 3 | X | | X | | X | | X | | Off | On | On | On | A | — | B | D | E |
| | X | | X | | X | | X | | Off | On | Off | On | A | — | C | B | C |
| 4 | X | | X | | X | | X | | Off | Off | On | On | A | A | — | B | C |
| | X | | X | | X | | X | | Off | Off | Off | On | A | A | A | — | A |
| 5 | X | | X | | X | | X | | Off | Off | Off | Off | A | A | A | A | — |
| | | | | | | | | | | | | | | | | | |



Note: Red wire, pin(1) of viking cable, or brown wire, pin(6) of ribbon cable must be connected to + 24 voc.

Table 4. Agilent 8769K with switch profile and connector and pin assignments

| X = Activated viking pin/wire # and color or ribbon pin # () | | | | | | | | | | | Section status | | | | | Isolation curve for port # | | | | | |
|---|-----------|--------|-----------|--------|-----------|-------|-----------|--------|-----------|-------|----------------|-----|-----|-----|-----|----------------------------|---|---|---|---|---|
| Port selected | Section 1 | | Section 2 | | Section 3 | | Section 4 | | Section 5 | | 1 | 2 | 3 | 4 | 5 | 1 | 2 | 3 | 4 | 5 | 6 |
| 1 | 12 (10) | 11 (4) | 8 (5) | 7 (11) | 10 (9) | 9 (3) | 6 (2) | 5 (13) | 3 (8) | 4 (7) | | | | | | | | | | | |
| | WHT | BRN | GRN | BLK | BLU | ORN | YEL | VIO | GRY | WT/RD | | | | | | | | | | | |
| | Conn. | Thru | Conn. | Thru | Conn. | Thru | Thru | Thru | Thru | Thru | | | | | | | | | | | |
| | X | | X | | X | | | | X | | On | On | On | On | On | – | B | D | E | F | G |
| | X | | X | | X | | X | X | X | | On | On | On | Off | On | – | B | D | F | E | F |
| | X | | X | | | X | | | X | | On | On | Off | On | On | – | B | E | D | E | F |
| | X | | | X | X | | X | | X | | On | Off | On | On | On | – | C | B | D | E | F |
| 2 | X | | | | | X | | | X | | On | Off | Off | On | On | – | C | C | B | C | E |
| | X | | | | | X | | | X | | On | Off | Off | On | On | – | C | C | C | B | D |
| | X | | | | | X | | X | X | | On | Off | Off | On | On | – | C | C | C | B | D |
| | | | | | | | | X | | X | On | Off | Off | Off | On | – | C | C | C | C | B |
| | | | | | | | | | | | On | Off | Off | Off | On | – | C | C | C | C | B |
| | | | | | | | | | | | On | Off | Off | Off | On | – | C | C | C | C | B |
| | | | | | | | | | | X | On | Off | Off | Off | On | – | C | C | C | C | B |
| 3 | X | | X | | X | | X | | X | | Off | On | On | On | On | A | – | B | D | E | E |
| | X | | | X | X | | | X | X | | Off | On | Off | On | On | A | – | C | B | C | F |
| | X | | | X | X | | | X | | X | Off | On | Off | Off | On | A | – | C | C | C | B |
| 4 | X | | | | | | X | | X | | Off | Off | On | On | On | A | A | – | B | C | E |
| | | | | | | | | X | X | | Off | Off | On | Off | On | A | A | – | A | B | D |
| | | | | | | | | | X | X | Off | Off | On | Off | On | A | A | – | C | C | A |
| 5 | X | | | | | X | | | X | | Off | Off | Off | Off | Off | A | A | A | – | A | C |
| | | | | | | | | | | | Off | Off | Off | Off | Off | A | A | A | A | – | B |
| | | | | | | | | | | | Off | Off | Off | Off | Off | A | A | A | A | A | – |
| 6 | X | | | | | | | | | X | Off | Off | Off | Off | Off | A | A | A | A | A | – |
| | | | | | | | | | | | Off | Off | Off | Off | Off | A | A | A | A | A | – |
| | | | | | | | | | | | Off | Off | Off | Off | Off | A | A | A | A | A | – |



Note: Red wire, pin(1) of viking cable, or brown wire, pin(6) of ribbon cable must be connected to + 24 voc.

Specifications, continued

Maximum insertion loss

Port 1 0.2 dB +0.05 dB/GHz

Port 2 0.2 dB +0.06 dB/GHz

Port 3 0.2 dB +0.08 dB/GHz

Port 4 0.25 dB +0.095 dB/GHz

Port 5 0.25 dB +0.108 dB/GHz

Port 6 0.25 dB +0.12 dB/GHz

RF input power (max):

1 watt average, 100 watts peak
(10 μ s pulse width)

Life (min):

5 million cycles per section

Repeatability:

0.01 dB, typ. to 18 GHz, 0.05 dB, typ. to
26.5 GHz (up to 5,000,000 cycles)

Environmental capabilities

Temperature, operating:

–20°C to +75°C

Temperature, non-operating:

–55°C to +85°C

Altitude, operating:

15,000 ft (4,570 meters)

Altitude, non-operating:

50,000 ft (13,700 meters)

Humidity:

Cycling 5 days, 40°C at 95% RH with
condensation

Shock, operating:

10 g's, 6 ms, on six sides, three blows

Shock, non-operating:

500 g's, 1.8 ms, in six directions

Vibration, operating:

5 g's, 34 to 2000 Hz

EMC:

Radiated interference is within the requirements of MIL-STD-461B method RE02, VDE 0871, and CTSPR Publication 11.

Ordering information

Microwave single-pole multi-throw switches

8766K Single-pole, three-throw

8767K Single-pole, four-throw

8768K Single-pole, five-throw

8769K Single-pole, six-throw

Options

To add options to a product, use the following scheme:

Model: 876xK (x = 6, 7, 8, 9)

Model

options: 876xK-Option 001

876xK-Option 002

Supply voltage (must choose one)

876xK-011 5 V solenoid

876xK-015 15 V solenoid

876xK-024 24 V solenoid (standard option)

RF connectors (must choose one)

876xK-002 SMA female connectors

876xK-004 3.5 mm female (standard option)

DC connectors (must choose one)

876xK-016 16 inch ribbon cable

876xK-060 5 foot dc control cable; 12 pin
"viking" (standard option)

Calibration documentation (optional)

876xK-UK6 SWR and insertion loss data
measured with an automatic
network analyzer with very
small uncertainties; directly
traceable to NIST standards.
Calibration frequencies: 1.5 to
26.5 GHz, every 0.25 GHz.

Other combinations can be created
for your applications; refer to Agilent
Application Note 332-1.

Mechanical information

| Net weight: | 8766K | 8767K | 8768K | 8769K |
|-------------|-----------------------|-----------------------|------------------------|------------------------|
| | 178 grams (6.3 oz) | 235 grams (8.3 oz) | 292 grams (10.3 oz) | 349 grams (12.3 oz) |

Mounting position: For any orientation, holes are threaded for a metric screw (m 3 x 0.5 x 5.1 deep).^A

RF connectors: 3.5 mm female (SMA compatible)

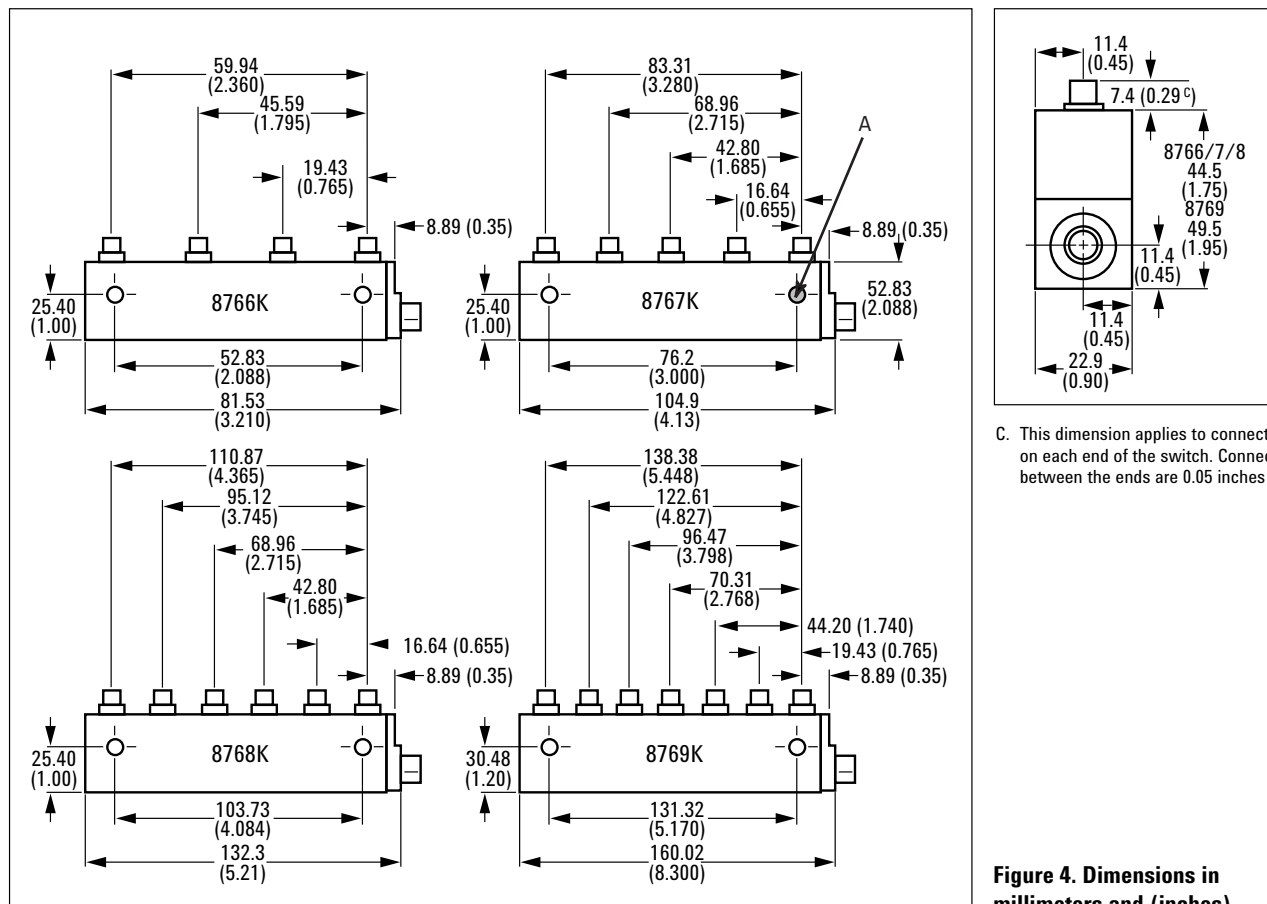
Option 876xK-002 SMA (for use only to 18 GHz)

Switching speed: Maximum 20 msec including settling time

| Solenoids | Coil voltage | Switching current ^B | Nominal coil impedance |
|------------------|----------------------|--------------------------------|------------------------|
| Standard | 24 V (20 to 30 V) | 130 mA (at 24 V) | 185 Ohms |
| Option 876xK-015 | 15 V (13 to 22 V) | 187 mA (at 15 V) | 80 Ohms |
| Option 876xK-011 | 5 V (4 to 7 V) | 332 mA (at 5 V) | 17 Ohms |

B. Current per section; approximately 8 msec duration before internal contacts open the coil circuit.

Accessory provided (except Option 008 and 016): Solenoid drive plug on 5-foot cable included.
(Replacement plug and cable assembly available as part number 8120-2178, except 8769K p/n 5061-0969.)



C. This dimension applies to connectors on each end of the switch. Connectors between the ends are 0.05 inches taller.

Figure 4. Dimensions in millimeters and (inches)

Agilent Technologies' Test and Measurement Support, Services, and Assistance

Agilent Technologies aims to maximize the value you receive, while minimizing your risk and problems. We strive to ensure that you get the test and measurement capabilities you paid for and obtain the support you need. Our extensive support resources and services can help you choose the right Agilent products for your applications and apply them successfully. Every instrument and system we sell has a global warranty. Support is available for at least five years beyond the production life of the product. Two concepts underlie Agilent's overall support policy: "Our Promise" and "Your Advantage."

Our Promise

Our Promise means your Agilent test and measurement equipment will meet its advertised performance and functionality. When you are choosing new equipment, we will help you with product information, including realistic performance specifications and practical recommendations from experienced test engineers. When you use Agilent equipment, we can verify that it works properly, help with product operation, and provide basic measurement assistance for the use of specified capabilities, at no extra cost upon request. Many self-help tools are available.

Your Advantage

Your Advantage means that Agilent offers a wide range of additional expert test and measurement services, which you can purchase according to your unique technical and business needs. Solve problems efficiently and gain a competitive edge by contracting with us for calibration, extra-cost upgrades, out-of-warranty repairs, and on-site education and training, as well as design, system integration, project management, and other professional engineering services. Experienced Agilent engineers and technicians worldwide can help you maximize your productivity, optimize the return on investment of your Agilent instruments and systems, and obtain dependable measurement accuracy for the life of those products.



Agilent Email Updates

www.agilent.com/find/emailupdates

Get the latest information on the products and applications you select.

Get the latest information on the products and applications you select.

By internet, phone, or fax, get assistance with all your test & measurement needs

Online assistance:

www.agilent.com/find/assist

Phone or Fax

United States:

(tel) 800 452 4844

Canada:

(tel) 877 894 4414

(fax) 905 282 6495

China:

(tel) 800 810 0189

(fax) 800 820 2816

Europe:

(tel) (31 20) 547 2323

(fax) (31 20) 547 2390

Japan:

(tel) (81) 426 56 7832

(fax) (81) 426 56 7840

Korea:

(tel) (82 2) 2004 5004

(fax) (82 2) 2004 5115

Latin America:

(tel) (305) 269 7500

(fax) (305) 269 7599

Taiwan:

(tel) 0800 047 866

(fax) 0800 286 331

Other Asia Pacific Countries:

(tel) (65) 6375 8100

(fax) (65) 6836 0252

Email: tm_asia@agilent.com

Product specifications and descriptions in this document subject to change without notice.

© Agilent Technologies, Inc. 2002

Printed in USA, May 30, 2002

5959-7831



Agilent Technologies