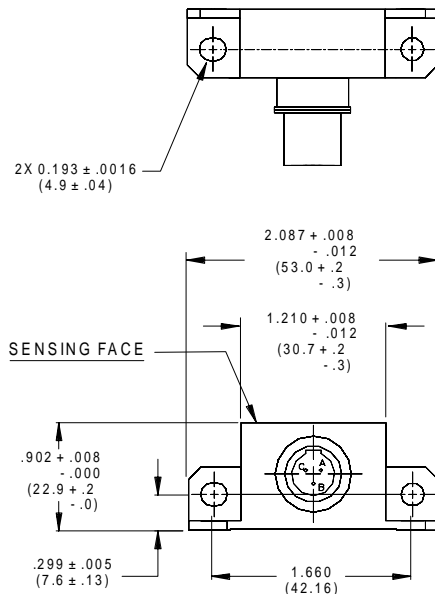


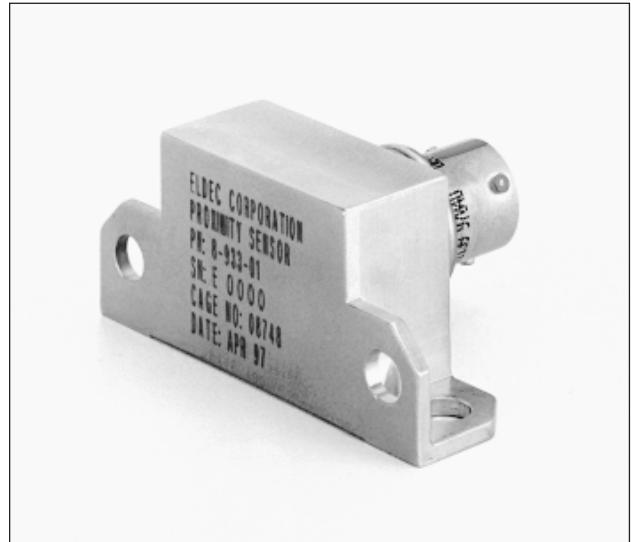
MODEL 8-933

HERMETICALLY SEALED PASSIVE PROXIMITY SENSOR

Ferrous Metal Sensing



DIMENSIONS IN INCHES
(Dimensions in mm)



Electrical Characteristics

Type: Two Wire, Passive Proximity Sensor
 Electrical Interface: ELDEC PSEU or Circuit Card
 Guaranteed Actuation: .138" from Sensing Face (with Standard Target)
 Guaranteed Deactuation: .209" from Sensing Face (with Standard Target)

Environmental Characteristics

Environmentally Sealed and qualified to commercial levels of EMI, vibration, shock, humidity, salt atmosphere, fungus, sand and dust. Temperature -55°C to 85°C.

Programs

Retrofit on Airbus A319, A320, A321, A330, A340

Additional Information

For more detailed specifications, options, price quotes or applications information, contact: ELDEC Corporation, P.O. Box 97027, Lynnwood, Washington U.S.A. 98046-9727

PHONE: (425) 743-1313 · FAX: (425) 743-8234 · TWX: 910-449-2855

or ELDEC France, 18, Rue du 35 eme Regiment d'Aviation,

F- 69500 BRON - FRANCE

PHONE: (33) 478.26.10.10 · FAX: (33) 472.37.72.30

Physical Characteristics

Size: As shown
 Weight: 55 Grams (not including connector mating half)
 Connector: MIL-C-26482
 Mounting: Flange Mount (as shown)
 Construction: All Stainless Steel, including sensing face

Applications

Landing Gear/Undercarriage, Doors, Leading Edge Devices, Thrust Reversers

Notes:

The 8-933 can detect ferrous metals only. Aluminum will cause deactuation and can therefore serve as a anti-target.

Electrical interface circuitry resides in ELDEC PSEU (Proximity Switch Electronic Unit) or on ELDEC circuit card.

CRANE[®]

ELDEC CORPORATION
A CRANE CO. COMPANY