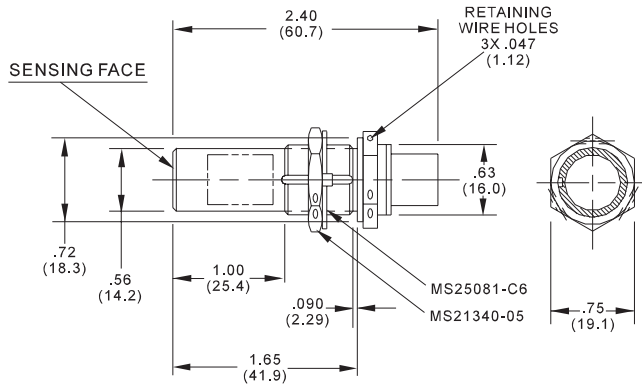


# MODEL 8-695

## HERMETICALLY SEALED ALL-METAL PASSIVE PROXIMITY SENSOR Ferrous Metal Sensing



DIMENSIONS IN INCHES  
(Dimensions in mm)



### Electrical Characteristics

Type:	Two Wire, Passive Proximity Sensor
Electrical Interface:	ELDEC PSEU
Guaranteed Actuation:	.082" from Sensing Face (with Standard Target)
Guaranteed Deactuation:	.116" from Sensing Face (with Standard Target)

### Environmental Characteristics

Hermetically Sealed and qualified to ABD 0007;  
Temperature -65°C to 100°C.

### Programs

Airbus A330, A340

### Physical Characteristics

Size:	As shown
Weight:	52 Grams (not including connector mating half)
Connector:	MIL-C-26482
Mounting:	Threaded Barrel (as shown)
Construction:	All Stainless Steel, including sensing face

### Applications

Landing Gear/Undercarriage, Doors, Leading Edge Devices,  
Thrust Reversers

### Notes:

The 8-695 can detect ferrous metals only. Aluminum will cause deactuation and can therefore serve as a anti-target.

Electrical interface circuitry typically resides in ELDEC PSEU  
(Proximity Switch Electronic Unit).

### Additional Information

For more detailed specifications, options, price quotes or applications  
information, contact: ELDEC Corporation, P.O. Box 97027,  
Lynnwood, Washington U.S.A. 98046-9727

PHONE: (425) 743-1313 · FAX: (425) 743-8234 · TWX: 910-449-2855

or ELDEC France, 18, Rue du 35 eme Regiment d'Aviation,

F- 69500 BRON - FRANCE

PHONE: (33) 478.26.10.10 · FAX: (33) 472.37.72

Copyright © Jul 1998 ELDEC Corporation  
Printed in U.S.A.

**CRANE**  
®

**ELDEC CORPORATION**  
A CRANE CO. COMPANY