

## Features

- Fast Read Access Time - 70 ns
- Five-Volt-Only Reprogramming
- Sector Program Operation
  - Single Cycle Reprogram (Erase and Program)
  - 1024 Sectors (128 bytes/sector)
  - Internal Address and Data Latches for 128 Bytes
- Two 8 KB Boot Blocks with Lockout
- Internal Program Control and Timer
- Hardware and Software Data Protection
- Fast Sector Program Cycle Time - 10 ms
- DATA Polling for End of Program Detection
- Low Power Dissipation
  - 50 mA Active Current
  - 100  $\mu$ A CMOS Standby Current
- Typical Endurance > 10,000 Cycles
- Single 5 V  $\pm$ 10% Supply
- CMOS and TTL Compatible Inputs and Outputs
- Commercial and Industrial Temperature Ranges

## Description

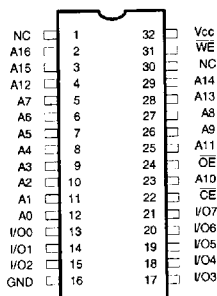
The AT29C010A is a five-volt-only in-system Flash programmable and erasable read only memory (PEROM). Its one megabit of memory is organized as 131,072 words by 8 bits. Manufactured with Atmel's advanced nonvolatile CMOS technology, the device offers access times to 70 ns with power dissipation of just 275 mW over the commercial temperature range. When the device is deselected, the CMOS standby current is less than 100  $\mu$ A. The device endurance is such that any sector can typically be written to in excess of 10,000 times.

(continued)

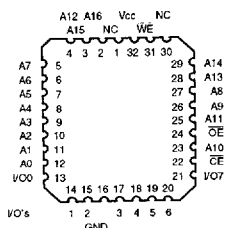
## Pin Configurations

| Pin Name    | Function            |
|-------------|---------------------|
| A0 - A16    | Addresses           |
| CE          | Chip Enable         |
| OE          | Output Enable       |
| WE          | Write Enable        |
| I/O0 - I/O7 | Data Inputs/Outputs |
| NC          | No Connect          |

DIP Top View

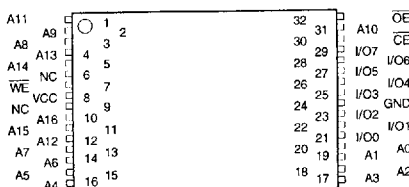


PLCC and LCC Top View



TSOP Top View

Type 1



**1 Megabit  
(128K x 8)  
5-Volt Only  
CMOS Flash  
PEROM**

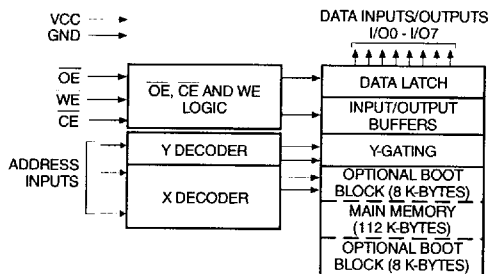
**AT29C010A**

## Description (Continued)

To allow for simple in-system reprogrammability, the AT29C010A does not require high input voltages for programming. Five-volt-only commands determine the operation of the device. Reading data out of the device is similar to reading from an EPROM. Reprogramming the AT29C010A is performed on a sector basis; 128 bytes of data are loaded into the device and then simultaneously programmed.

During a reprogram cycle, the address locations and 128 bytes of data are internally latched, freeing the address and data bus for other operations. Following the initiation of a program cycle, the device will automatically erase the sector and then program the latched data using an internal control timer. The end of a program cycle can be detected by DATA polling of I/O7. Once the end of a program cycle has been detected, a new access for a read or program can begin.

## Block Diagram



## Device Operation

**READ:** The AT29C010A is accessed like an EPROM. When  $\overline{CE}$  and  $\overline{OE}$  are low and  $\overline{WE}$  is high, the data stored at the memory location determined by the address pins is asserted on the outputs. The outputs are put in the high impedance state whenever  $\overline{CE}$  or  $\overline{OE}$  is high. This dual-line control gives designers flexibility in preventing bus contention.

**BYTE LOAD:** Byte loads are used to enter the 128 bytes of a sector to be programmed or the software codes for data protection. A byte load is performed by applying a low pulse on the  $\overline{WE}$  or  $\overline{CE}$  input with  $\overline{CE}$  or  $\overline{WE}$  low (respectively) and  $\overline{OE}$  high. The address is latched on the falling edge of  $\overline{CE}$  or  $\overline{WE}$ , whichever occurs last. The data is latched by the first rising edge of  $\overline{CE}$  or  $\overline{WE}$ .

**PROGRAM:** The device is reprogrammed on a sector basis. If a byte of data within a sector is to be changed, data for the entire sector must be loaded into the device. The data in any byte that is not loaded during the programming of its sector will be indeterminate. Once the bytes of a sector are loaded into the device, they are simultaneously programmed during the internal programming period. After the first data byte has been loaded into the device, successive bytes are entered in the same manner. Each new byte to be programmed must have its high to low transition on  $\overline{WE}$  (or  $\overline{CE}$ ) within 150  $\mu$ s of the low to high transition of  $\overline{WE}$  (or  $\overline{CE}$ ) of the preceding byte. If a high to low transition is not detected within 150  $\mu$ s of the last low to high transition, the load period will end and the internal programming period will start. A7 to A16 specify the sector address. The sector address must be valid during each high to low transition of  $\overline{WE}$  (or  $\overline{CE}$ ). A0 to A6 specify the byte address within the sector. The bytes may be loaded in any order; sequential loading is not required. Once a programming operation has been initiated, and

for the duration of t<sub>WC</sub>, a read operation will effectively be a polling operation.

**SOFTWARE DATA PROTECTION:** A software controlled data protection feature is available on the AT29C010A. Once the software protection is enabled a software algorithm must be issued to the device before a program may be performed. The software protection feature may be enabled or disabled by the user; when shipped from Atmel, the software data protection feature is disabled. To enable the software data protection, a series of three program commands to specific addresses with specific data must be performed. After the software data protection is enabled the same three program commands must begin each program cycle in order for the programs to occur. All software program commands must obey the sector program timing specifications. Once set, the software data protection feature remains active unless its disable command is issued. Power transitions will not reset the software data protection feature, however the software feature will guard against inadvertent program cycles during power transitions.

Once set, software data protection will remain active unless the disable command sequence is issued.

After setting SDP, any attempt to write to the device without the three-byte command sequence will start the internal write timers. No data will be written to the device; however, for the duration of t<sub>WC</sub>, a read operation will effectively be a polling operation.

After the software data protection's three-byte command code is given, a byte load is performed by applying a low pulse on the  $\overline{WE}$  or  $\overline{CE}$  input with  $\overline{CE}$  or  $\overline{WE}$  low (respectively) and  $\overline{OE}$  high. The address is latched on the falling edge of  $\overline{CE}$  or  $\overline{WE}$ , whichever occurs last. The data is latched by the first rising edge of  $\overline{CE}$

(continued)

## Device Operation (Continued)

or  $\overline{WE}$ . The 128 bytes of data must be loaded into each sector by the same procedure as outlined in the program section under device operation.

**HARDWARE DATA PROTECTION:** Hardware features protect against inadvertent programs to the AT29C010A in the following ways: (a)  $V_{CC}$  sense—if  $V_{CC}$  is below 3.8 V (typical), the program function is inhibited. (b)  $V_{CC}$  power on delay—once  $V_{CC}$  has reached the  $V_{CC}$  sense level, the device will automatically time out 5 ms (typical) before programming. (c) Program inhibit—holding any one of  $\overline{OE}$  low,  $\overline{CE}$  high or  $\overline{WE}$  high inhibits program cycles. (d) Noise filter—pulses of less than 15 ns (typical) on the  $\overline{WE}$  or  $\overline{CE}$  inputs will not initiate a program cycle.

**PRODUCT IDENTIFICATION:** The product identification mode identifies the device and manufacturer as Atmel. It may be accessed by hardware or software operation. The hardware operation mode can be used by an external programmer to identify the correct programming algorithm for the Atmel product. In addition, users may wish to use the software product identification mode to identify the part (i.e. using the device code), and have the system software use the appropriate sector size for program operations. In this manner, the user can have a common board design for 256K to 4-megabit densities and, with each density's sector size in a memory map, have the system software apply the appropriate sector size.

For details, see Operating Modes (for hardware operation) or Software Product Identification. The manufacturer and device code is the same for both modes.

**DATA POLLING:** The AT29C010A features  $\overline{DATA}$  polling to indicate the end of a program cycle. During a program cycle an attempted read of the last byte loaded will result in the complement of the loaded data on  $I/O$ . Once the program cycle has been completed, true data is valid on all outputs and the next cycle may begin.  $\overline{DATA}$  polling may begin at any time during the program cycle.

**TOGGLE BIT:** In addition to  $\overline{DATA}$  polling the AT29C010A provides another method for determining the end of a program or erase cycle. During a program or erase operation, successive attempts to read data from the device will result in  $I/O$  toggling between one and zero. Once the program cycle has completed,

$I/O$  will stop toggling and valid data will be read. Examining the toggle bit may begin at any time during a program cycle.

**OPTIONAL CHIP ERASE MODE:** The entire device can be erased by using a six-byte software code. Please see Software Chip Erase application note for details.

**BOOT BLOCK PROGRAMMING LOCKOUT:** The AT29C010A has two designated memory blocks that have a programming lockout feature. This feature prevents programming of data in the designated block once the feature has been enabled. Each of these blocks consists of 8K bytes; the programming lockout feature can be set independently for either block. While the lockout feature does not have to be activated, it can be activated for either or both blocks.

These two 8K memory sections are referred to as *boot blocks*. Secure code which will bring up a system can be contained in a boot block. The AT29C010A blocks are located in the first 8K bytes of memory and the last 8K bytes of memory. The boot block programming lockout feature can therefore support systems that boot from the lower addresses of memory or the higher addresses. Once the programming lockout feature has been activated, the data in that block can no longer be erased or programmed; data in other memory locations can still be changed through the regular programming methods. To activate the lockout feature, a series of seven program commands to specific addresses with specific data must be performed. Please see Boot Block Lockout Feature Enable Algorithm.

If the boot block lockout feature has been activated on either block, the chip erase function will be disabled.

**BOOT BLOCK LOCKOUT DETECTION:** A software method is available to determine whether programming of either boot block section is locked out. See Software Product Identification Entry and Exit sections. When the device is in the software product identification mode, a read from location 00002 will show if programming the lower address boot block is locked out while reading location FFFF2 will do so for the upper boot block. If the data is FE, the corresponding block can be programmed; if the data is FF, the program lockout feature has been activated and the corresponding block cannot be programmed. The software product identification exit mode should be used to return to standard operation.

## Absolute Maximum Ratings\*

|                                                                            |                           |
|----------------------------------------------------------------------------|---------------------------|
| Temperature Under Bias .....                                               | -55°C to +125°C           |
| Storage Temperature .....                                                  | -65°C to +150°C           |
| All Input Voltages<br>(including N.C. Pins)<br>with Respect to Ground..... | -0.6 V to +6.25 V         |
| All Output Voltages<br>with Respect to Ground.....                         | -0.6 V to $V_{CC}$ +0.6 V |
| Voltage on $\overline{OE}$<br>with Respect to Ground.....                  | -0.6 V to +13.5 V         |

\*NOTICE: Stresses beyond those listed under "Absolute Maximum Ratings" may cause permanent damage to the device. This is a stress rating only and functional operation of the device at these or any other conditions beyond those indicated in the operational sections of this specification is not implied. Exposure to absolute maximum rating conditions for extended periods may affect device reliability.





## Pin Capacitance (f = 1 MHz, T = 25°C) <sup>(1)</sup>

|                  | Typ | Max | Units | Conditions             |
|------------------|-----|-----|-------|------------------------|
| C <sub>IN</sub>  | 4   | 6   | pF    | V <sub>IN</sub> = 0 V  |
| C <sub>OUT</sub> | 8   | 12  | pF    | V <sub>OUT</sub> = 0 V |

Note: 1. This parameter is characterized and is not 100% tested.

## D.C. and A.C. Operating Range

|                              |      | AT29C010A-70 | AT29C010A-90 | AT29C010A-12 | AT29C010A-15 |
|------------------------------|------|--------------|--------------|--------------|--------------|
| Operating Temperature (Case) | Com. | 0°C - 70°C   | 0°C - 70°C   | 0°C - 70°C   | 0°C - 70°C   |
|                              | Ind. |              | -40°C - 85°C | -40°C - 85°C | -40°C - 85°C |
| V <sub>CC</sub> Power Supply |      | 5 V ± 5%     | 5 V ± 10%    | 5 V ± 10%    | 5 V ± 10%    |

## Operating Modes

| Mode                    | CE              | OE               | WE              | Ai                                                                                       | I/O                              |
|-------------------------|-----------------|------------------|-----------------|------------------------------------------------------------------------------------------|----------------------------------|
| Read                    | V <sub>IL</sub> | V <sub>IL</sub>  | V <sub>IH</sub> | Ai                                                                                       | D <sub>OUT</sub>                 |
| Program <sup>(2)</sup>  | V <sub>IL</sub> | V <sub>IH</sub>  | V <sub>IL</sub> | Ai                                                                                       | D <sub>IN</sub>                  |
| 5V Chip Erase           | V <sub>IL</sub> | V <sub>IH</sub>  | V <sub>IL</sub> | Ai                                                                                       |                                  |
| Standby/Write Inhibit   | V <sub>IH</sub> | X <sup>(1)</sup> | X               | X                                                                                        | High Z                           |
| Program Inhibit         | X               | X                | V <sub>IH</sub> |                                                                                          |                                  |
| Program Inhibit         | X               | V <sub>IL</sub>  | X               |                                                                                          |                                  |
| Output Disable          | X               | V <sub>IH</sub>  | X               |                                                                                          | High Z                           |
| Product Identification  |                 |                  |                 |                                                                                          |                                  |
| Hardware                | V <sub>IL</sub> | V <sub>IL</sub>  | V <sub>IH</sub> | A1-A16 = V <sub>IL</sub> , A9 = V <sub>IH</sub> , <sup>(3)</sup><br>A0 = V <sub>IL</sub> | Manufacturer Code <sup>(4)</sup> |
|                         |                 |                  |                 | A1-A16 = V <sub>IL</sub> , A9 = V <sub>IH</sub> , <sup>(3)</sup><br>A0 = V <sub>IH</sub> | Device Code <sup>(4)</sup>       |
| Software <sup>(5)</sup> |                 |                  |                 | A0 = V <sub>IL</sub>                                                                     | Manufacturer Code <sup>(4)</sup> |
|                         |                 |                  |                 | A0 = V <sub>IH</sub>                                                                     | Device Code <sup>(4)</sup>       |

Notes: 1. X can be V<sub>IL</sub> or V<sub>IH</sub>.

2. Refer to A.C. Programming Waveforms.

3. V<sub>H</sub> = 12.0 V ± 0.5 V.

4. Manufacturer Code: 1F, Device Code: D5

5. See details under Software Product Identification Entry/Exit.

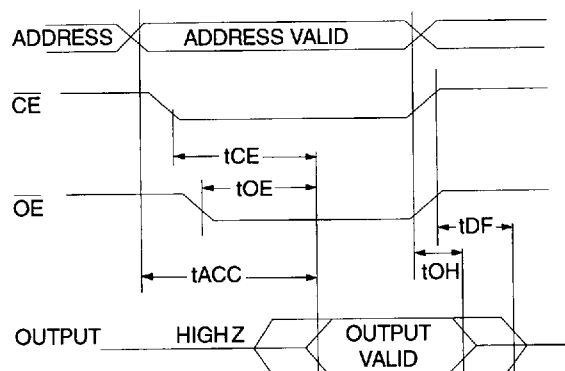
## D.C. Characteristics

| Symbol           | Parameter                            | Condition                                          | Min  | Max | Units |
|------------------|--------------------------------------|----------------------------------------------------|------|-----|-------|
| I <sub>LI</sub>  | Input Load Current                   | V <sub>IN</sub> = 0 V to V <sub>CC</sub>           |      | 10  | μA    |
| I <sub>LO</sub>  | Output Leakage Current               | V <sub>I/O</sub> = 0 V to V <sub>CC</sub>          |      | 10  | μA    |
| I <sub>SB1</sub> | V <sub>CC</sub> Standby Current CMOS | $\overline{CE} = V_{CC} - 0.3V$ to V <sub>CC</sub> | Com. | 100 | μA    |
|                  |                                      |                                                    | Ind. | 300 | μA    |
| I <sub>SB2</sub> | V <sub>CC</sub> Standby Current TTL  | $\overline{CE} = 2.0 V$ to V <sub>CC</sub>         |      | 3   | mA    |
| I <sub>CC</sub>  | V <sub>CC</sub> Active Current       | f = 5 MHz; I <sub>OUT</sub> = 0 mA                 |      | 50  | mA    |
| V <sub>IL</sub>  | Input Low Voltage                    |                                                    |      | 0.8 | V     |
| V <sub>IH</sub>  | Input High Voltage                   |                                                    | 2.0  |     | V     |
| V <sub>OL</sub>  | Output Low Voltage                   | I <sub>OL</sub> = 2.1 mA                           |      | .45 | V     |
| V <sub>OH1</sub> | Output High Voltage                  | I <sub>OH</sub> = -400 μA                          | 2.4  |     | V     |
| V <sub>OH2</sub> | Output High Voltage CMOS             | I <sub>OH</sub> = -100 μA; V <sub>CC</sub> = 4.5 V | 4.2  |     | V     |

## A.C. Read Characteristics

| Symbol           | Parameter                                                                               | AT29C010A-70 |     | AT29C010A-90 |     | AT29C010A-12 |     | AT29C010A-15 |     | Units |
|------------------|-----------------------------------------------------------------------------------------|--------------|-----|--------------|-----|--------------|-----|--------------|-----|-------|
|                  |                                                                                         | Min          | Max | Min          | Max | Min          | Max | Min          | Max |       |
| $t_{ACC}$        | Address to Output Delay                                                                 |              | 70  |              | 90  |              | 120 |              | 150 | ns    |
| $t_{CE}^{(1)}$   | $\overline{CE}$ to Output Delay                                                         |              | 70  |              | 90  |              | 120 |              | 150 | ns    |
| $t_{OE}^{(2)}$   | $\overline{OE}$ to Output Delay                                                         | 0            | 35  | 0            | 40  | 0            | 50  | 0            | 70  | ns    |
| $t_{DF}^{(3,4)}$ | $\overline{CE}$ or $\overline{OE}$ to Output Float                                      | 0            | 25  | 0            | 25  | 0            | 30  | 0            | 40  | ns    |
| $t_{OH}$         | Output Hold from $\overline{OE}$ , $\overline{CE}$ or Address, whichever occurred first | 0            |     | 0            |     | 0            |     | 0            |     | ns    |

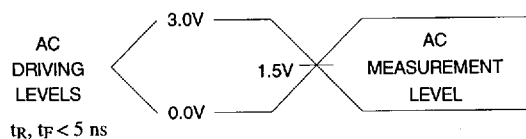
## A.C. Read Waveforms<sup>(1,2,3,4)</sup>



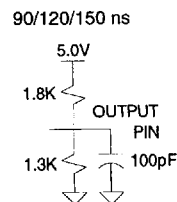
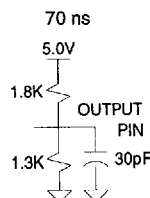
### Notes:

- $\overline{CE}$  may be delayed up to  $t_{ACC} - t_{CE}$  after the address transition without impact on  $t_{ACC}$ .
- $\overline{OE}$  may be delayed up to  $t_{CE} - t_{OE}$  after the falling edge of  $\overline{CE}$  without impact on  $t_{CE}$  or by  $t_{ACC} - t_{OE}$  after an address change without impact on  $t_{ACC}$ .
- $t_{DF}$  is specified from  $\overline{OE}$  or  $\overline{CE}$  whichever occurs first ( $C_L = 5pF$ ).
- This parameter is characterized and is not 100% tested.

## Input Test Waveforms and Measurement Level



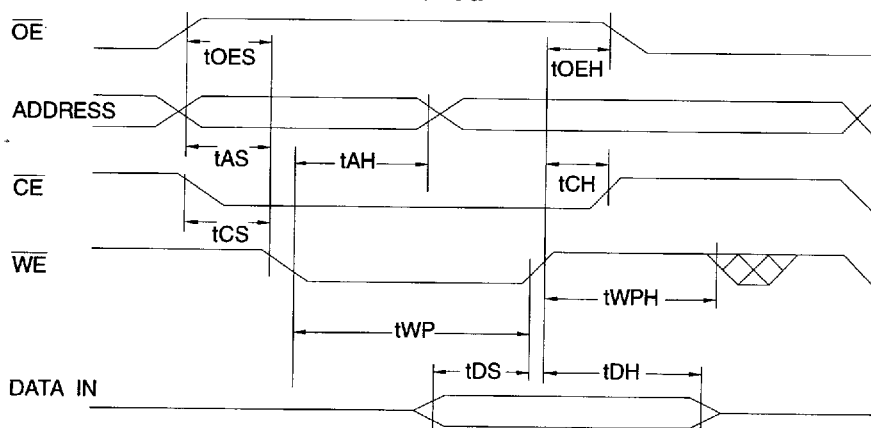
## Output Test Load



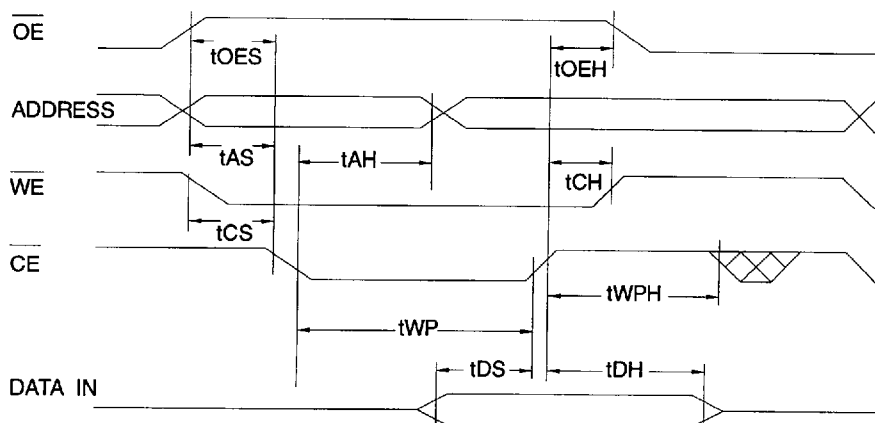
## A.C. Byte Load Characteristics

| Symbol    | Parameter                                                | Min | Max | Units |
|-----------|----------------------------------------------------------|-----|-----|-------|
| tAS, tOES | Address, $\overline{OE}$ Set-up Time                     | 0   |     | ns    |
| tAH       | Address Hold Time                                        | 50  |     | ns    |
| tCS       | Chip Select Set-up Time                                  | 0   |     | ns    |
| tCH       | Chip Select Hold Time                                    | 0   |     | ns    |
| tWP       | Write Pulse Width ( $\overline{WE}$ or $\overline{CE}$ ) | 90  |     | ns    |
| tDS       | Data Set-up Time                                         | 35  |     | ns    |
| tDH, tOEH | Data, $\overline{OE}$ Hold Time                          | 0   |     | ns    |
| tWPH      | Write Pulse Width High                                   | 100 |     | ns    |

## A.C. Byte Load Waveforms- $\overline{WE}$ Controlled

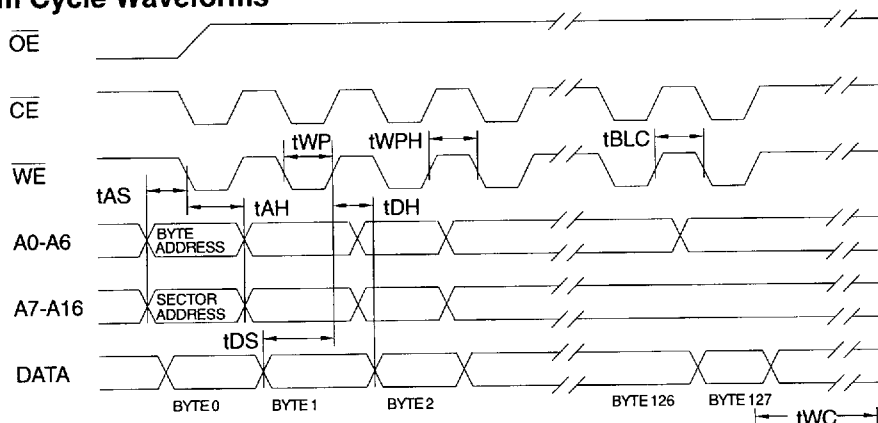


## A.C. Byte Load Waveforms- $\overline{CE}$ Controlled



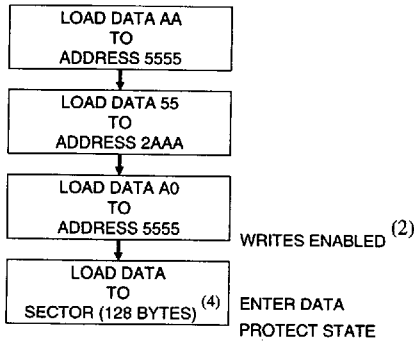
## Program Cycle Characteristics

| Symbol           | Parameter              | Min | Max | Units |
|------------------|------------------------|-----|-----|-------|
| t <sub>WC</sub>  | Write Cycle Time       |     | 10  | ms    |
| t <sub>AS</sub>  | Address Set-up Time    | 0   |     | ns    |
| t <sub>AH</sub>  | Address Hold Time      | 50  |     | ns    |
| t <sub>DS</sub>  | Data Set-up Time       | 35  |     | ns    |
| t <sub>DH</sub>  | Data Hold Time         | 0   |     | ns    |
| t <sub>WP</sub>  | Write Pulse Width      | 90  |     | ns    |
| t <sub>BLC</sub> | Byte Load Cycle Time   |     | 150 | μs    |
| t <sub>WPH</sub> | Write Pulse Width High | 100 |     | ns    |

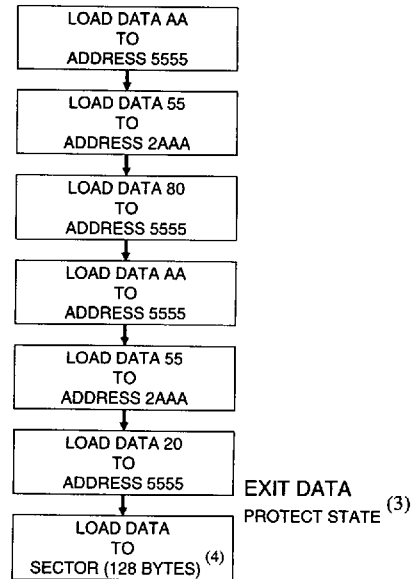
Program Cycle Waveforms<sup>(1,2,3)</sup>

- Notes:
1. A7 through A16 must specify the sector address during each high to low transition of  $\overline{WE}$  (or  $\overline{CE}$ ).
  2.  $\overline{OE}$  must be high when  $\overline{WE}$  and  $\overline{CE}$  are both low.
  3. All bytes that are not loaded within the sector being programmed will be indeterminate.

## Software Data Protection Enable Algorithm <sup>(1)</sup>



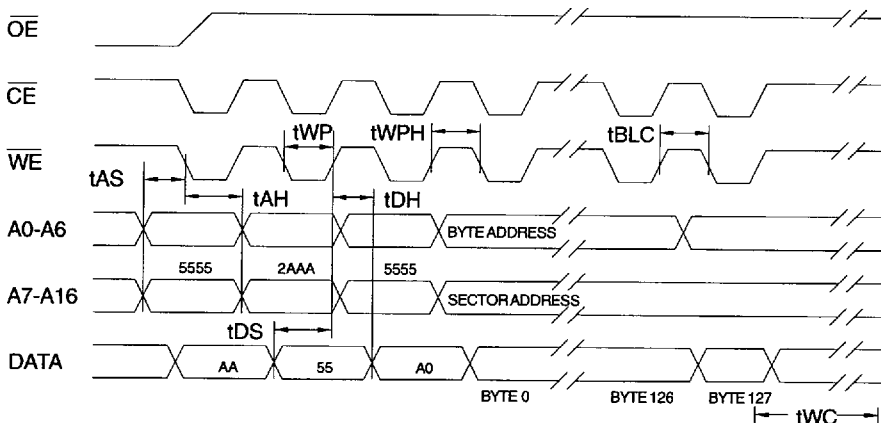
## Software Data Protection Disable Algorithm <sup>(1)</sup>



Notes for software program code:

1. Data Format: I/O7 - I/O0 (Hex);  
Address Format: A14 - A0 (Hex).
2. Data Protect state will be activated at end of program cycle.
3. Data Protect state will be deactivated at end of program period.
4. 128 bytes of data **MUST** be loaded.

## Software Protected Program Cycle Waveform <sup>(1,2,3)</sup>



- Notes:
1. A7 through A16 must specify the sector address during each high to low transition of  $\overline{WE}$  (or  $\overline{CE}$ ) after the software code has been entered.
  2.  $\overline{OE}$  must be high when  $\overline{WE}$  and  $\overline{CE}$  are both low.
  3. All bytes that are not loaded within the sector being programmed will be indeterminate.



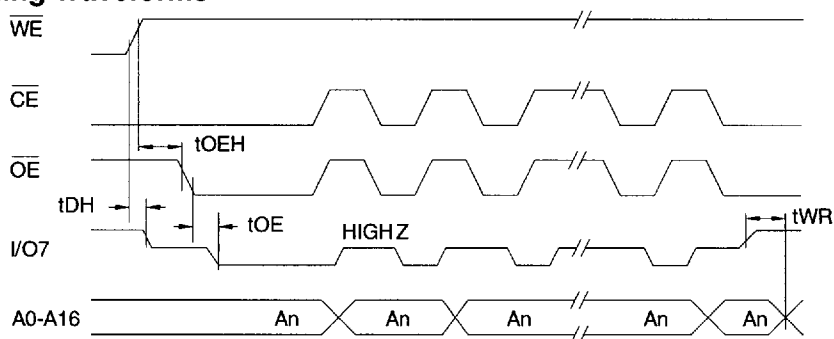
Data Polling Characteristics<sup>(1)</sup>

| Symbol            | Parameter                                             | Min | Typ | Max | Units |
|-------------------|-------------------------------------------------------|-----|-----|-----|-------|
| t <sub>DH</sub>   | Data Hold Time                                        | 10  |     |     | ns    |
| t <sub>OE</sub> H | $\overline{\text{OE}}$ Hold Time                      | 10  |     |     | ns    |
| t <sub>OE</sub>   | $\overline{\text{OE}}$ to Output Delay <sup>(2)</sup> |     |     |     | ns    |
| t <sub>WR</sub>   | Write Recovery Time                                   | 0   |     |     | ns    |

Note: 1. These parameters are characterized and not 100% tested.

2. See t<sub>OE</sub> spec in A.C. Read Characteristics.

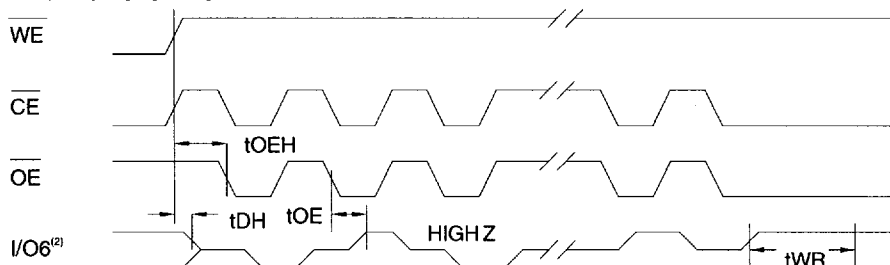
## Data Polling Waveforms

Toggle Bit Characteristics<sup>(1)</sup>

| Symbol            | Parameter                                             | Min | Typ | Max | Units |
|-------------------|-------------------------------------------------------|-----|-----|-----|-------|
| t <sub>DH</sub>   | Data Hold Time                                        | 10  |     |     | ns    |
| t <sub>OE</sub> H | $\overline{\text{OE}}$ Hold Time                      | 10  |     |     | ns    |
| t <sub>OE</sub>   | $\overline{\text{OE}}$ to Output Delay <sup>(2)</sup> |     |     |     | ns    |
| t <sub>OEHP</sub> | $\overline{\text{OE}}$ High Pulse                     | 150 |     |     | ns    |
| t <sub>WR</sub>   | Write Recovery Time                                   | 0   |     |     | ns    |

Notes: 1. These parameters are characterized and not 100% tested.

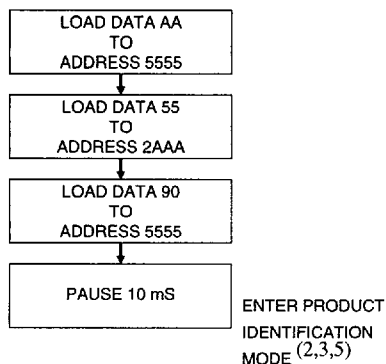
2. See t<sub>OE</sub> spec in A.C. Read Characteristics.

Toggle Bit Waveforms<sup>(1,2,3)</sup>

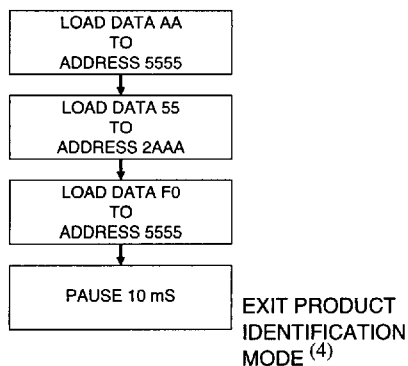
Notes:

1. Toggling either  $\overline{\text{OE}}$  or  $\overline{\text{CE}}$  or both  $\overline{\text{OE}}$  and  $\overline{\text{CE}}$  will operate toggle bit.
2. Beginning and ending state of I/O6 will vary.
3. Any address location may be used but the address should not vary.

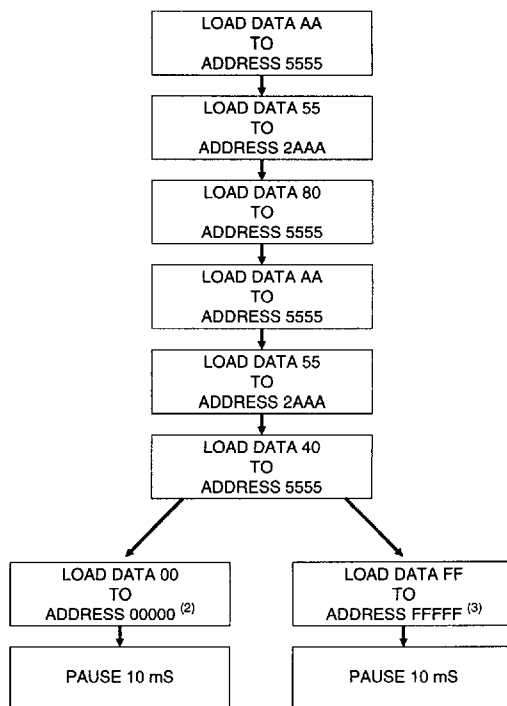
## Software Product Identification Entry <sup>(1)</sup>



## Software Product Identification Exit <sup>(1)</sup>



## Boot Block Lockout Feature Enable Algorithm <sup>(1)</sup>



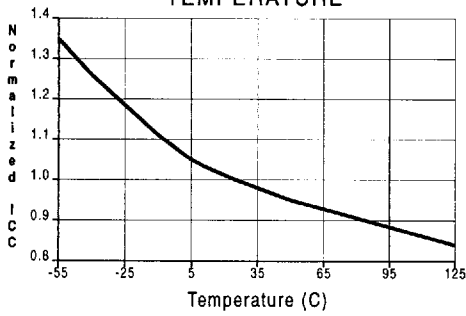
Notes for boot block lockout feature enable:

1. Data Format: I/O7 - I/O0 (Hex);  
Address Format: A14 - A0 (Hex).
2. Lockout feature set on lower address boot block.
3. Lockout feature set on higher address boot block.

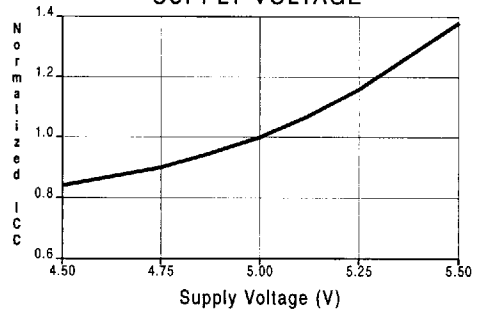
Notes for software product identification:

1. Data Format: I/O7 - I/O0 (Hex);  
Address Format: A14 - A0 (Hex).
2. A1 - A16 = V<sub>IL</sub>.  
Manufacture Code is read for A0 = V<sub>IL</sub>;  
Device Code is read for A0 = V<sub>IH</sub>.
3. The device does not remain in identification mode if powered down.
4. The device returns to standard operation mode.
5. Manufacturer Code: 1F  
Device Code: D5

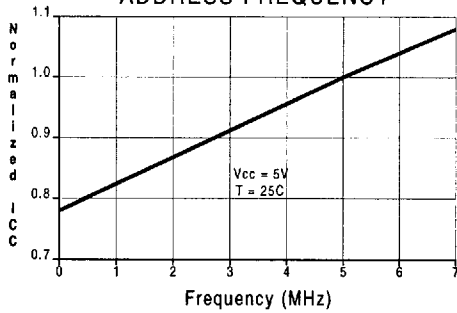
NORMALIZED SUPPLY CURRENT vs.  
TEMPERATURE



NORMALIZED SUPPLY CURRENT vs.  
SUPPLY VOLTAGE



NORMALIZED SUPPLY CURRENT vs.  
ADDRESS FREQUENCY





## Ordering Information

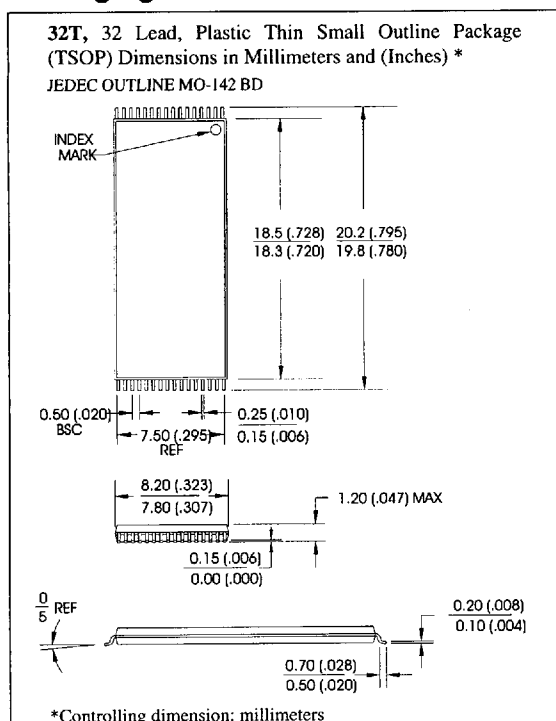
| tACC<br>(ns) | ICC (mA) |         | Ordering Code                                                                          | Package                           | Operation Range              |
|--------------|----------|---------|----------------------------------------------------------------------------------------|-----------------------------------|------------------------------|
|              | Active   | Standby |                                                                                        |                                   |                              |
| 70           | 50       | 0.1     | AT29C010A-70JC<br>AT29C010A-70PC<br>AT29C010A-70TC                                     | 32J<br>32P6<br>32T                | Commercial<br>(0° to 70°C)   |
| 90           | 50       | 0.1     | AT29C010A-90DC<br>AT29C010A-90JC<br>AT29C010A-90LC<br>AT29C010A-90PC<br>AT29C010A-90TC | 32D6<br>32J<br>32L<br>32P6<br>32T | Commercial<br>(0° to 70°C)   |
| 90           | 50       | 0.3     | AT29C010A-90DI<br>AT29C010A-90JI<br>AT29C010A-90LI<br>AT29C010A-90PI<br>AT29C010A-90TI | 32D6<br>32J<br>32L<br>32P6<br>32T | Industrial<br>(-40° to 85°C) |
| 120          | 50       | 0.1     | AT29C010A-12DC<br>AT29C010A-12JC<br>AT29C010A-12LC<br>AT29C010A-12PC<br>AT29C010A-12TC | 32D6<br>32J<br>32L<br>32P6<br>32T | Commercial<br>(0° to 70°C)   |
| 120          | 50       | 0.3     | AT29C010A-12DI<br>AT29C010A-12JI<br>AT29C010A-12LI<br>AT29C010A-12PI<br>AT29C010A-12TI | 32D6<br>32J<br>32L<br>32P6<br>32T | Industrial<br>(-40° to 85°C) |
| 150          | 50       | 0.1     | AT29C010A-15DC<br>AT29C010A-15JC<br>AT29C010A-15LC<br>AT29C010A-15PC<br>AT29C010A-15TC | 32D6<br>32J<br>32L<br>32P6<br>32T | Commercial<br>(0° to 70°C)   |
| 150          | 50       | 0.3     | AT29C010A-15DI<br>AT29C010A-15JI<br>AT29C010A-15LI<br>AT29C010A-15PI<br>AT29C010A-15TI | 32D6<br>32J<br>32L<br>32P6<br>32T | Industrial<br>(-40° to 85°C) |

### Package Type

|             |                                                                          |
|-------------|--------------------------------------------------------------------------|
| <b>32D6</b> | 32 Lead, 0.600" Wide, Non-Windowed, Ceramic Dual Inline Package (Cerdip) |
| <b>32J</b>  | 32 Lead, Plastic J-Leaded Chip Carrier (PLCC)                            |
| <b>32L</b>  | 32 Pad, Non-Windowed, Ceramic Leadless Chip Carrier (LCC)                |
| <b>32P6</b> | 32 Lead, 0.600" Wide, Plastic Dual Inline Package (PDIP)                 |
| <b>32T</b>  | 32 Lead, Thin Small Outline Package (TSOP)                               |



## Packaging Information



### **Atmel Headquarters**

2125 O'Nel Drive  
San Jose, CA 95131  
TEL (408) 441-0311  
FAX (408) 436-4200

### **Atmel Colorado Springs Operation**

1150 E. Cheyenne Mtn. Blvd.  
Colorado Springs, CO 80906  
TEL (719) 576-3300  
FAX (719) 540-1759

### **Domestic Corporate Sales Offices**

#### *Northwest*

2125 O'Nel Drive  
San Jose, CA 95131  
TEL (408) 436-4270  
FAX (408) 436-4314

#### *Northeast*

300 Granite Street  
Suite 106  
Braintree, MA 02184  
TEL (617) 849-0220  
FAX (617) 848-0012

#### *Mid-Atlantic*

101 Carnegie Center  
Suite 205  
Princeton, NJ 08540  
TEL (609) 520-0606  
FAX (609) 520-9175

#### *South Central*

17304 Preston Road  
Suite 720  
Dallas, TX 75252  
TEL (214) 733-3366  
FAX (214) 733-3163

#### *North Central*

1721 Moon Lake Boulevard  
Suite 430  
Hoffman Estates, IL 60194  
TEL (708) 310-1200  
FAX (708) 310-1650

#### *Southwest*

8101 Kaiser  
Suite 140  
Anaheim Hills, CA 92808  
TEL (714) 282-8080  
FAX (714) 282-0500

#### *Southeast*

809 Spring Forest Road  
Suite 600  
Raleigh, NC 27609  
TEL (919) 850-9889  
FAX (919) 850-9894

### **International Corporate Sales Offices**

#### *United Kingdom*

Atmel U.K., Ltd.  
Coliseum Business Centre  
Riverside Way  
Camberley, Surrey  
England, GU15 3YL  
TEL (441) 276-686677  
FAX (441) 276-686697

#### *France*

Atmel SARL  
55 Avenue Diderot  
94100 Saint Maur  
France  
TEL (33) 1-48855522  
FAX (33) 1-48855596

#### *Finland*

Atmel OY  
Sinikalliontie 5  
SF-02630 Espoo  
Finland  
TEL (358) 0-5023026  
FAX (358) 0-5023126

#### *Germany*

Atmel GmbH  
Ginnheimer Strasse 45  
60487 Frankfurt 90  
Germany  
TEL (49) 69-7075910  
FAX (49) 69-7075912

#### *Atmel GmbH*

Niederlassung Sud  
Am Hohenpark 6 A  
D83075 Bad Feilnbach  
Germany  
TEL (49) 8066-8592  
FAX (49) 8066-8489

#### *Hong Kong*

Atmel Asia, Ltd.  
Room 1219  
Chinachem Golden Plaza  
77 Mody Road  
Tsimshatsui East  
Kowloon, Hong Kong  
TEL (852) 7219778  
FAX (852) 7221369

#### *Italy*

Atmel Italy  
Ufficio di Milano  
Centro Direzionale Colleoni  
Palazzo Andromeda 3  
20041 Agrate Brianza  
Italy  
TEL (39) 396056955  
FAX (39) 396056969

#### *Japan*

Atmel Japan K.K.  
Thomas Bldg., 16-1  
Nihonbashi Hakosaki-Cho  
Chuo Ku, Tokyo 103  
Japan  
TEL (81) 3-5641-0211  
FAX (81) 3-5641-0217

#### *Korea*

Atmel Korea, Ltd.  
Room 1509  
Gurosunkyoung Officetel  
106-4, 7 Guro 5-Dong  
Guro-Gu  
Seoul, Korea  
TEL (82) 2-8396341  
FAX (82) 2-8396343

#### *Singapore*

Atmel Singapore PTE., Ltd.  
6001 Beach Road  
21-01 Golden Mile Tower  
Singapore 0719  
TEL (65) 2999-212  
FAX (65) 2990-955

#### *Taiwan*

Atmel Taiwan, Ltd.  
FL 15-4, No. 83, Sec. 1,  
Nan-Kan Road  
Lu-Chu Hsiang, Taoyuan Hsien  
Taiwan, Republic of China  
TEL (886) 3-3229133  
FAX (886) 3-3229131

### **FAX-ON-DEMAND**

If calling within the U.S. dial (1-800) 29-ATMEL (292-8635).  
If calling from outside the U.S. dial (1-408) 441-0732.



Atmel Corporation, 2125 O'Nel Drive, San Jose, CA 95131, TEL (408) 441-0311, FAX (408) 436-4300.

0394A-6/95/2.5M

Printed on recycled paper.

1074177 0009357 495

50046

15