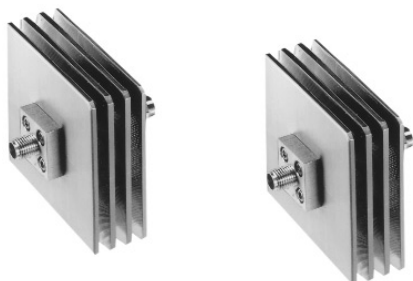




Model 75 Medium Power Fixed Coaxial Attenuators

dc to 40.0 GHz
5 Watts

Bi-directional Design



Features

- /// **Compact Construction** - Lowest size/power ratio.
- /// **Precision injection molded connector dielectric.**
- /// **Designed to meet environmental requirements of MIL-A-3933.**
- /// **Flat Response.**

Specifications

NOMINAL IMPEDANCE: 50 Ω

FREQUENCY RANGE: dc to 40.0 GHz

MAXIMUM DEVIATION OVER FREQUENCY:

Nominal ATTN (dB)	Deviation (dB)	
	dc-18 GHz	18-40 GHz
3	± 0.50	± 1.00
6, 10, 20, 30	± 0.80	± 1.50

MAXIMUM SWR:

Frequency (GHz)	SWR
dc - 18	1.20
18 - 40	1.35

POWER RATING (mounted horizontally): 5 watts **average (bi-directional)** to 25°C ambient temperature, derated linearly to 0.5 Watt @ 125°C. 200 watts **peak** (5 μ sec pulse width; 1.25% duty cycle).

POWER COEFFICIENT: <0.005 dB/dB/watt

TEMPERATURE COEFFICIENT: <0.0004 dB/dB/°C

TEMPERATURE RANGE: -55 °C to 125 °C

CALIBRATION: Insertion loss and SWR data supplied at 0.05, 4, 8, 12, 18, 26.5 and 40 GHz. Other test data available at additional cost.

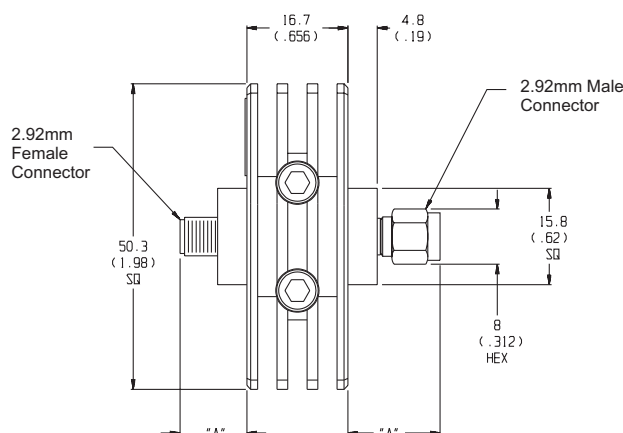
CONNECTORS: 2.92mm (Male/Female) connectors - mate nondestructively with SMA per MIL-C-39012, 3.5mm and other 2.92mm connectors.

Connector Options	Type/Description
1	2.92mm, Female
2	2.92mm, Male

CONSTRUCTION: Gold plated finned brass body, gold plated beryllium copper contacts.

WEIGHT: 200 g (7.0 oz.) maximum

PHYSICAL DIMENSIONS:



Connector	DIM A
Female	11.4 (0.45)
Male	16.4 (0.64)

NOTE: All dimensions are given in mm (inches) and are nominal, unless otherwise specified.

MODEL NUMBER DESCRIPTION:

Example:

75	- XX	- XX*
Basic Model Number	Attenuation Value (dB)	Connector Options
		-11 Female/Female
		-12 Male/Female
		-22 Male/Male

*Unit is bi-directional and full power may be applied to either connector.