

74VCX86

Low Voltage Quad 2-Input Exclusive-OR Gate with 3.6V Tolerant Inputs and Outputs

General Description

The VCX86 contains four 2-input exclusive OR gates. This product is designed for low voltage (1.2V to 3.6V) V_{CC} applications with I/O compatibility up to 3.6V

The 74VCX86 is fabricated with an advanced CMOS technology to achieve high-speed operation while maintaining low CMOS power dissipation.

Features

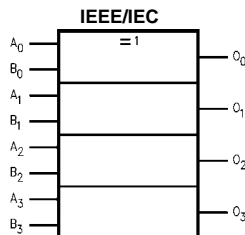
- 1.2V to 3.6V V_{CC} supply operation
- 3.6V tolerant inputs and outputs
- t_{PD}
3.0 ns max for 3.0V to 3.6V V_{CC}
- Power-off high impedance inputs and outputs
- Static Drive (I_{OH}/I_{OL})
 ± 24 mA @ 3.0V V_{CC}
- Uses patented noise/EMI reduction circuitry
- Latchup performance exceeds 300 mA
- ESD performance:
Human body model > 2000V
Machine model > 250V

Ordering Code:

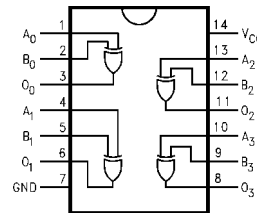
| Order Number | Package Number | Package Description |
|--------------|----------------|--|
| 74VCX86M | M14A | 14-Lead Small Outline Integrated Circuit (SOIC), JEDEC MS-012, 0.150" Narrow |
| 74VCX86MTC | MTC14 | 14-Lead Thin Shrink Small Outline Package (TSSOP), JEDEC MO-153, 4.4mm Wide |

Devices also available in Tape and Reel. Specify by appending the suffix letter "X" to the ordering code.

Logic Symbol



Connection Diagram



Pin Descriptions

| Pin Names | Description |
|------------|-------------|
| A_n, B_n | Inputs |
| O_n | Outputs |

74VCX86 Low Voltage Quad 2-Input Exclusive-OR Gate with 3.6V Tolerant Inputs and Outputs

Absolute Maximum Ratings(Note 1)

| | |
|--|--------------------------|
| Supply Voltage (V_{CC}) | -0.5V to +4.6V |
| DC Input Voltage (V_I) | -0.5V to +4.6V |
| Output Voltage (V_O) | |
| HIGH or LOW State (Note 2) | -0.5V to $V_{CC} + 0.5V$ |
| $V_{CC} = 0V$ | -0.5V to +4.6V |
| DC Input Diode Current (I_{IK}) $V_I < 0V$ | -50 mA |
| DC Output Diode Current (I_{OK}) | |
| $V_O < 0V$ | -50 mA |
| $V_O > V_{CC}$ | +50 mA |
| DC Output Source/Sink Current | |
| (I_{OH}/I_{OL}) | ± 50 mA |
| DC V_{CC} or GND Current per | |
| Supply Pin (I_{CC} or Ground) | ± 100 mA |
| Storage Temperature Range (T_{STG}) | -65°C to +150°C |

Recommended Operating Conditions (Note 3)

| | |
|---|-------------------|
| Power Supply | |
| Operating | 1.2V to 3.6V |
| Input Voltage | -0.3V to +3.6V |
| Output Voltage (V_O) | |
| HIGH or LOW State | 0V to V_{CC} |
| Output Current in I_{OH}/I_{OL} | |
| $V_{CC} = 3.0V$ to 3.6V | ± 24 mA |
| $V_{CC} = 2.3V$ to 2.7V | ± 18 mA |
| $V_{CC} = 1.65V$ to 2.3V | ± 6 mA |
| $V_{CC} = 1.4V$ to 1.6V | ± 2 mA |
| $V_{CC} = 1.2V$ | ± 100 μA |
| Free Air Operating Temperature (T_A) | -40°C to +85°C |
| Minimum Input Edge Rate ($\Delta t/\Delta V$) | |
| $V_{IN} = 0.8V$ to 2.0V, $V_{CC} = 3.0V$ | 10 ns/V |

Note 1: The Absolute Maximum Ratings are those values beyond which the safety of the device cannot be guaranteed. The device should not be operated at these limits. The parametric values defined in the Electrical Characteristics tables are not guaranteed at the Absolute Maximum Ratings. The "Recommended Operating Conditions" table will define the conditions for actual device operation.

Note 2: I_O Absolute Maximum Rating must be observed.

Note 3: Floating or unused inputs must be held HIGH or LOW.

DC Electrical Characteristics

| Symbol | Parameter | Conditions | V_{CC} (V) | Min | Max | Units |
|----------|---------------------------|--|--|--|--|-------|
| V_{IH} | HIGH Level Input Voltage | | 2.7 - 3.6 2.3 - 2.7 1.65 - 2.3 1.4 - 1.6 1.2 | 2.0 1.6 $0.65 \times V_{CC}$ $0.65 \times V_{CC}$ $0.65 \times V_{CC}$ | | V |
| V_{IL} | LOW Level Input Voltage | | 2.7 - 3.6 2.3 - 2.7 1.65 - 2.3 1.4 - 1.6 1.2 | | 0.8 0.7 $0.35 \times V_{CC}$ $0.35 \times V_{CC}$ | V |
| V_{OH} | HIGH Level Output Voltage | $I_{OH} = -100 \mu A$ $I_{OH} = -12$ mA $I_{OH} = -18$ mA $I_{OH} = -24$ mA | 2.7 - 3.6 2.7 3.0 3.0 | $V_{CC} - 0.2$ 2.2 2.4 2.2 | | V |
| | | $I_{OH} = -100 \mu A$ $I_{OH} = -6$ mA $I_{OH} = -12$ mA $I_{OH} = -18$ mA | 2.3 - 2.7 2.3 2.3 2.3 | $V_{CC} - 0.2$ 2.0 1.8 1.7 | | |
| | | $I_{OH} = -100 \mu A$ $I_{OH} = -6$ mA | 1.65 - 2.3 1.65 | $V_{CC} - 0.2$ 1.25 | | |
| | | $I_{OH} = -100 \mu A$ $I_{OH} = -2$ mA | 1.4 - 1.6 1.4 | $V_{CC} - 0.2$ 1.05 | | |
| | | $I_{OH} = -100 \mu A$ | 1.2 | $V_{CC} - 0.2$ | | |
| | | | | | | |
| | | | | | | |
| | | | | | | |

DC Electrical Characteristics (Continued)

| Symbol | Parameter | Conditions | V _{CC} (V) | Min | Max | Units |
|--------------------------|---------------------------------------|---|------------------------|-----|----------------|---------|
| V _{OL} | LOW Level Output Voltage | I _{OL} = 100 μ A | 2.7 - 3.6 | | 0.2 | V |
| | | I _{OL} = 12 mA | 2.7 | | 0.4 | |
| | | I _{OL} = 18 mA | 3.0 | | 0.4 | |
| | | I _{OL} = 24 mA | 3.0 | | 0.55 | |
| | | I _{OL} = 100 μ A | 2.3 - 2.7 | | 0.2 | |
| | | I _{OL} = 12 mA | 2.3 | | 0.4 | |
| | | I _{OL} = 18 mA | 2.3 | | 0.6 | |
| | | I _{OL} = 100 μ A | 1.65 - 2.3 | | 0.2 | |
| | | I _{OL} = 6 mA | 1.65 | | 0.3 | |
| | | I _{OL} = 100 μ A | 1.4 - 1.6 | | 0.2 | |
| | | I _{OL} = 2 mA | 1.4 | | 0.35 | |
| | | I _{OL} = 100 μ A | 1.2 | | 0.05 | |
| I _I | Input Leakage Current | 0 \leq V _I \leq 3.6V | 1.2 - 3.6 | | \pm 5.0 | μ A |
| I _{OFF} | Power-OFF Leakage Current | 0 \leq (V _I , V _O) \leq 3.6V | 0 | | 10 | μ A |
| I _{CC} | Quiescent Supply Current | V _I = V _{CC} or GND V _{CC} \leq (V _I) | 1.2 - 3.6 1.2 - 3.6 | | 20 \pm 20 | μ A |
| Δ I _{CC} | Increase in I _{CC} per Input | V _{IH} = V _{CC} - 0.6V | 2.7 - 3.6 | | 750 | μ A |

AC Electrical Characteristics (Note 4)

| Symbol | Parameter | Conditions | V _{CC} (V) | T _A = -40°C to +85°C | | Units | Figure Number |
|--|-----------------------------------|---|------------------------|---------------------------------|------|-------|------------------|
| | | | | Min | Max | | |
| t _{PHL} t _{PLH} | Propagation Delay | C _L = 30 pF, R _L = 500 Ω | 3.3 \pm 0.3 | 0.6 | 3.0 | ns | Figures 1, 2 |
| | | | 2.5 \pm 0.2 | 0.8 | 3.9 | | |
| | | | 1.8 \pm 0.15 | 1.0 | 7.8 | | |
| | | C _L = 15 pF, R _L = 2k Ω | 1.5 \pm 0.1 | 1.0 | 15.6 | ns | Figures 3, 4 |
| | | | 1.2 | 1.5 | 39 | | |
| t _{OSHL} t _{OSLH} | Output to Output Skew (Note 5) | C _L = 30 pF, R _L = 500 Ω | 3.3 \pm 0.3 | | 0.5 | ns | |
| | | | 2.5 \pm 0.2 | | 0.5 | | |
| | | | 1.8 \pm 0.15 | | 0.75 | | |
| | | C _L = 15 pF, R _L = 2k Ω | 1.5 \pm 0.1 | | 1.5 | | |
| | | | 1.2 | | 1.5 | | |

Note 4: For C_L = 50pF, add approximately 300 ps to the AC maximum specification.

Note 5: Skew is defined as the absolute value of the difference between the actual propagation delay for any two separate outputs of the same device. The specification applies to any outputs switching in the same direction, either HIGH-to-LOW (t_{OSHL}) or LOW-to-HIGH (t_{OSLH}).

Dynamic Switching Characteristics

| Symbol | Parameter | Conditions | V _{CC} (V) | T _A = +25°C | Units |
|------------------|---|--|------------------------|------------------------|-------|
| | | | | Typical | |
| V _{OLP} | Quiet Output Dynamic Peak V _{OL} | C _L = 30 pF, V _{IH} = V _{CC} , V _{IL} = 0V | 1.8 2.5 3.3 | 0.25 0.6 0.8 | V |
| V _{OLV} | Quiet Output Dynamic Valley V _{OL} | C _L = 30 pF, V _{IH} = V _{CC} , V _{IL} = 0V | 1.8 2.5 3.3 | -0.25 -0.6 -0.8 | V |
| V _{OHV} | Quiet Output Dynamic Valley V _{OH} | C _L = 30 pF, V _{IH} = V _{CC} , V _{IL} = 0V | 1.8 2.5 3.3 | 1.5 1.9 2.2 | V |

Capacitance

| Symbol | Parameter | Conditions | T _A = +25°C | Units |
|------------------|-------------------------------|---|------------------------|-------|
| | | | Typical | |
| C _{IN} | Input Capacitance | V _{CC} = 1.8, 2.5V or 3.3V, V _I = 0V or V _{CC} | 6 | pF |
| C _{OUT} | Output Capacitance | V _I = 0V or V _{CC} , V _{CC} = 1.8V, 2.5V or 3.3V | 7 | pF |
| C _{PD} | Power Dissipation Capacitance | V _I = 0V or V _{CC} , f = 10 MHz, V _{CC} = 1.8V, 2.5V or 3.3V | 20 | pF |

AC Loading and Waveforms (V_{CC} 3.3V ± 0.3V to 1.8V ± 0.15V)

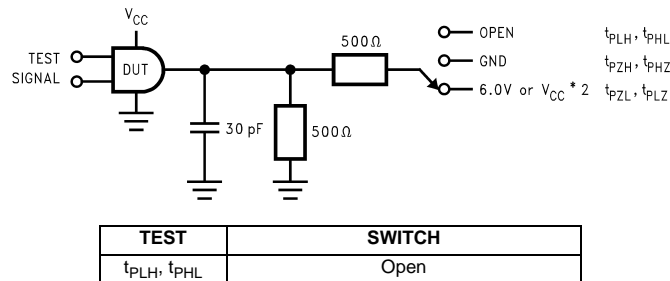


FIGURE 1. AC Test Circuit

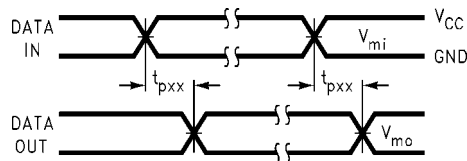
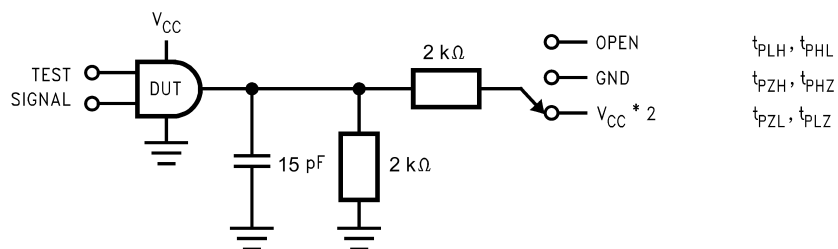


FIGURE 2. Waveform for Inverting and Non-Inverting Functions

| Symbol | V _{CC} | | |
|-----------------|-----------------|--------------------|--------------------|
| | 3.3V ± 0.3V | 2.5V ± 0.2V | 1.8V ± 0.15V |
| V _{mi} | 1.5V | V _{CC} /2 | V _{CC} /2 |
| V _{mo} | 1.5V | V _{CC} /2 | V _{CC} /2 |

AC Loading and Waveforms ($V_{CC} 1.5V \pm 0.1V$ to $1.2V$)



| TEST | SWITCH |
|--------------------|--|
| t_{PLH}, t_{PHL} | Open |
| t_{PZL}, t_{PLZ} | $V_{CC} \times 2$ at $V_{CC} = 1.5 \pm 0.1V$ |
| t_{PZH}, t_{PHZ} | GND |

FIGURE 3. AC Test Circuit

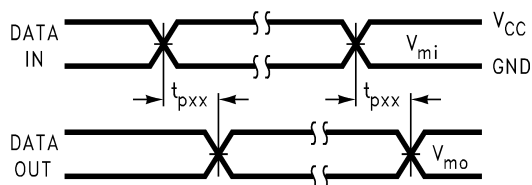
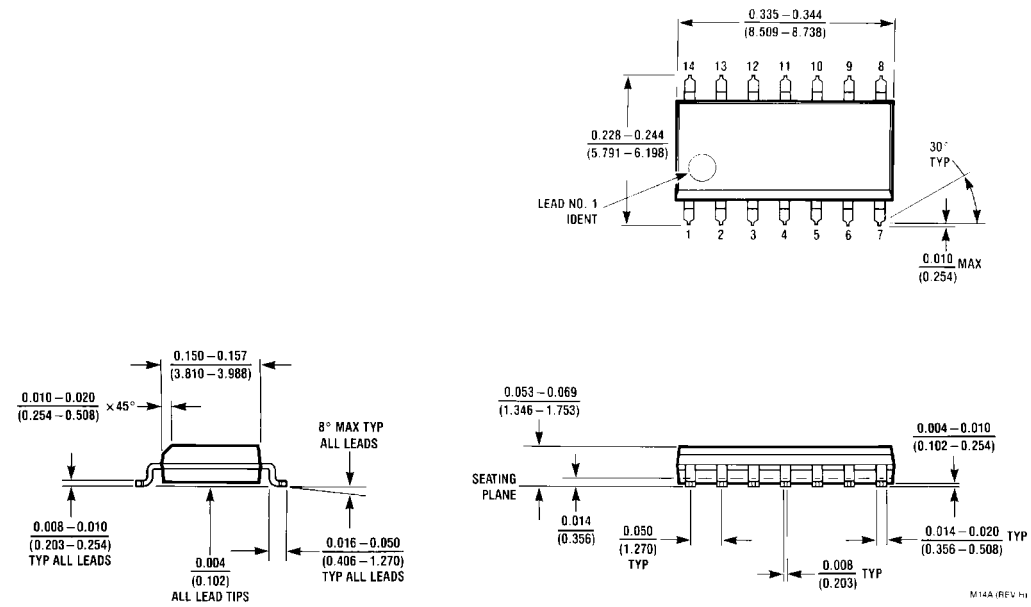


FIGURE 4. Waveform for Inverting and Non-Inverting Functions

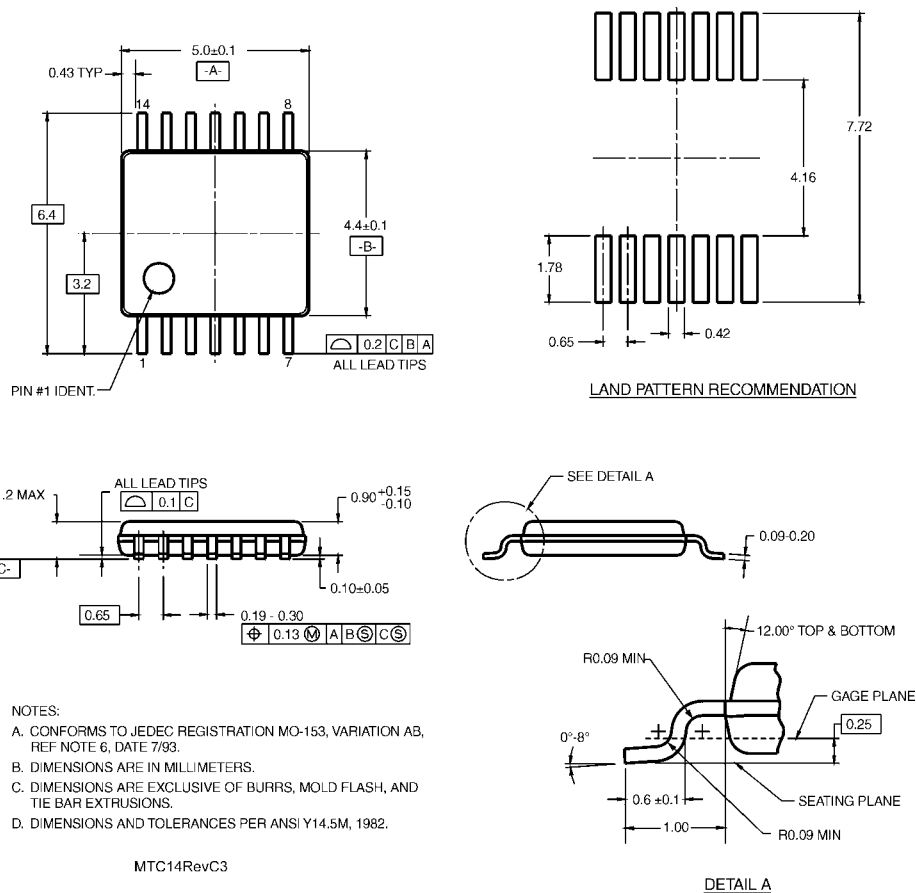
| Symbol | V_{CC} |
|----------|-----------------|
| | $1.5V \pm 0.1V$ |
| V_{mi} | $V_{CC}/2$ |
| V_{mo} | $V_{CC}/2$ |

Physical Dimensions inches (millimeters) unless otherwise noted



14-Lead Small Outline Integrated Circuit (SOIC), JEDEC MS-012, 0.150" Narrow
Package Number M14A

Physical Dimensions inches (millimeters) unless otherwise noted (Continued)



- NOTES:
- CONFORMS TO JEDEC REGISTRATION MO-153, VARIATION AB, REF NOTE 6, DATE 7/93.
 - DIMENSIONS ARE IN MILLIMETERS.
 - DIMENSIONS ARE EXCLUSIVE OF BURRS, MOLD FLASH, AND TIE BAR EXTRUSIONS.
 - DIMENSIONS AND TOLERANCES PER ANSI Y14.5M, 1982.

MTC14RevC3

14-Lead Thin Shrink Small Outline Package (TSSOP), JEDEC MO-153, 4.4mm Wide Package Number MTC14

Fairchild does not assume any responsibility for use of any circuitry described, no circuit patent licenses are implied and Fairchild reserves the right at any time without notice to change said circuitry and specifications.

LIFE SUPPORT POLICY

FAIRCHILD'S PRODUCTS ARE NOT AUTHORIZED FOR USE AS CRITICAL COMPONENTS IN LIFE SUPPORT DEVICES OR SYSTEMS WITHOUT THE EXPRESS WRITTEN APPROVAL OF THE PRESIDENT OF FAIRCHILD SEMICONDUCTOR CORPORATION. As used herein:

- Life support devices or systems are devices or systems which, (a) are intended for surgical implant into the body, or (b) support or sustain life, and (c) whose failure to perform when properly used in accordance with instructions for use provided in the labeling, can be reasonably expected to result in a significant injury to the user.
- A critical component in any component of a life support device or system whose failure to perform can be reasonably expected to cause the failure of the life support device or system, or to affect its safety or effectiveness.

www.fairchildsemi.com