

Model 74 Medium Power Fixed Coaxial Attenuators

dc to 26.5 GHz
25 Watts

3.5mm Connectors



Features

- /// **Compact Construction** - Lowest size/power ratio.
- /// **Precision injection molded connector dielectric.**
- /// **Designed to meet environmental requirements of MIL-A-3933.**
- /// **Low SWR Design.**

Specifications

NOMINAL IMPEDANCE: 50 Ω

FREQUENCY RANGE: dc to 26.5 GHz

MAXIMUM DEVIATION OVER FREQUENCY:

Nominal ATTN (dB)	Deviation (dB)
3	± 0.70
6, 10	± 1.00
20, 30	± 1.50

MAXIMUM SWR:

Frequency (GHz)	SWR
dc - 18	1.25
18 - 26.5	1.30

POWER RATING: 25 watts **average (unidirectional)** to 25°C ambient temperature, derated linearly to 2.5 Watt @ 125°C. 500 watts **peak** (5 µsec pulse width; 2.5% duty cycle). Maximum power rating into output is 10% of the average power rating.

POWER COEFFICIENT: <0.0015 dB/dB/watt

TEMPERATURE COEFFICIENT: <0.0004 dB/dB/°C

TEMPERATURE RANGE: -55°C to 125°C

CALIBRATION: Insertion loss and SWR data supplied at 0.05, 4, 8, 12, 18 and 26 GHz. Other test data available at additional cost.

CONNECTORS: 3.5mm (Male/Female) connectors - mate nondestructively with SMA per MIL-C-39012, 2.92mm and other 3.5mm connectors.

Connector Options

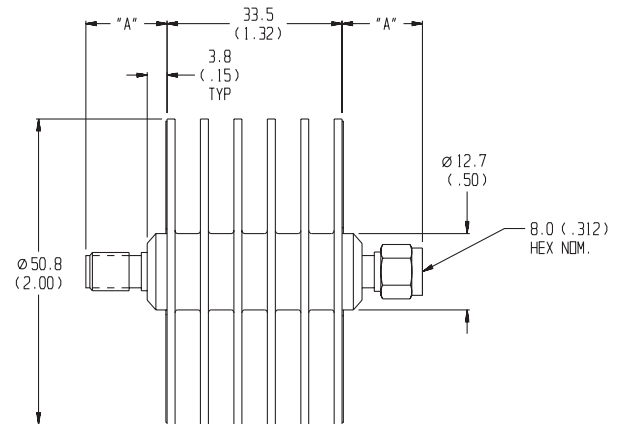
Type/Description

1	3.5mm, Female
2	3.5mm, Male

CONSTRUCTION: Black, finned aluminum body, gold plated beryllium copper contacts.

WEIGHT: 100 g (3.5 oz.) maximum

PHYSICAL DIMENSIONS:



Connector	DIM A
3.5mm Male	16.0 (0.63)
3.5mm Female	15.0 (0.59)

NOTE: All dimensions are given in mm (inches) and are maximum, unless otherwise specified.

MODEL NUMBER DESCRIPTION:

Example:

74 - XX - XX

Basic
Model
Number

Attenuation
Value (dB)

Connector Options
1st digit is input side
2nd digit is output side