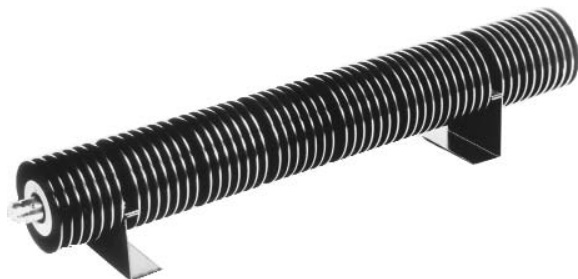


Model 67 High Power Fixed Coaxial Attenuators

dc to 12.7 GHz
350 Watts

Forced Cooled



Features

- /// Precision Injection Molded Connectors.
- /// Designed to meet environmental requirements of MIL-A-3933.
- /// Broadband performance, ideal for test applications.

Specifications

NOMINAL IMPEDANCE: 50 Ω

FREQUENCY RANGE: dc to 12.7 GHz

MAXIMUM DEVIATION OVER FREQUENCY:

Nominal ATTN (dB)	Deviation (dB)	
	dc-8 GHz	8 -12.7 GHz
10	± 2.00	+6.00/-0.00
20, 30	± 2.50	+5.00/-0.00

MAXIMUM SWR:

Frequency (GHz)	SWR
dc - 8	1.30
8 - 12.7	1.60

POWER RATING (mounted horizontally): 350 watts average (unidirectional) @ 25°C ambient temperature. Case temperature must be held to **100°C maximum**. 5 kilowatt **peak** (5 μ sec pulse width; 3.5% duty cycle). Maximum power rating into output port is 10 watts average.

POWER COEFFICIENT: <0.0001 dB/dB/watt

TEMPERATURE COEFFICIENT: <0.0004 dB/dB/°C

TEMPERATURE RANGE: -55°C to 100°C (case temp.)

CALIBRATION: Insertion loss test data supplied at 0.05, 0.5, 4.0, 8.0 & 12.0 GHz.

CONNECTORS: Type N connectors per MIL-STD-348 interface dimensions - mate nondestructively with MIL-C-39012 connectors.

Connector Options

Type/Description

3	Type N, Female
4	Type N, Male

CONSTRUCTION: Aluminum alloy body, stainless steel connectors; gold plated beryllium copper contacts.

WEIGHT: 120 g (43 oz.) maximum

MODEL NUMBER DESCRIPTION:

Example:

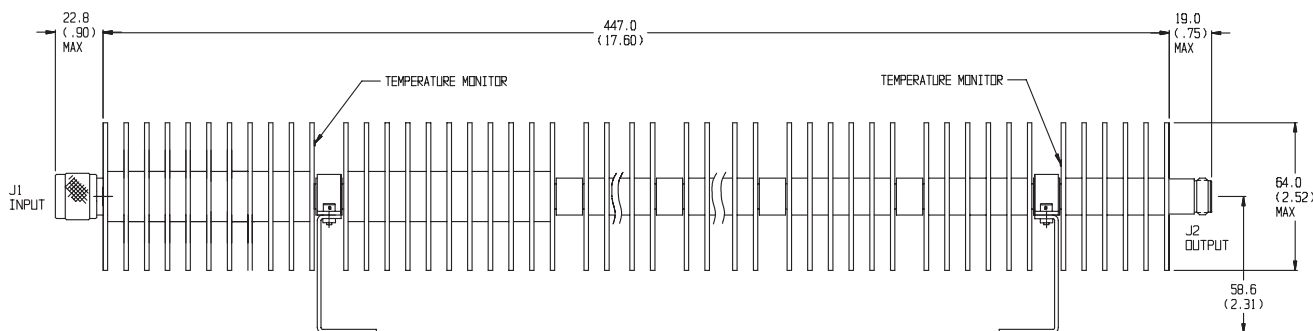
67 - XX - XX

Basic
Model
Number

Attenuation
Value (dB)

Connector Options
1st digit is input side
2nd digit is output side

PHYSICAL DIMENSIONS:



NOTE: All dimensions are given in mm (inches) and are maximum, unless otherwise specified.