

Model 65 High Power Fixed Coaxial Attenuators

dc to 2.5 GHz
150 Watts

Conduction/Convection Cooled



Features

- /// **Compact Construction** - Lowest size/power ratio.
- /// **Flexible Mounting Position** - The units may be mounted in horizontal (fins up) or vertical position.
- /// **Rugged Construction** - Quality connectors with special high temperature support beads.

Specifications

NOMINAL IMPEDANCE: 50 Ω

FREQUENCY RANGE: dc to 2.5 GHz

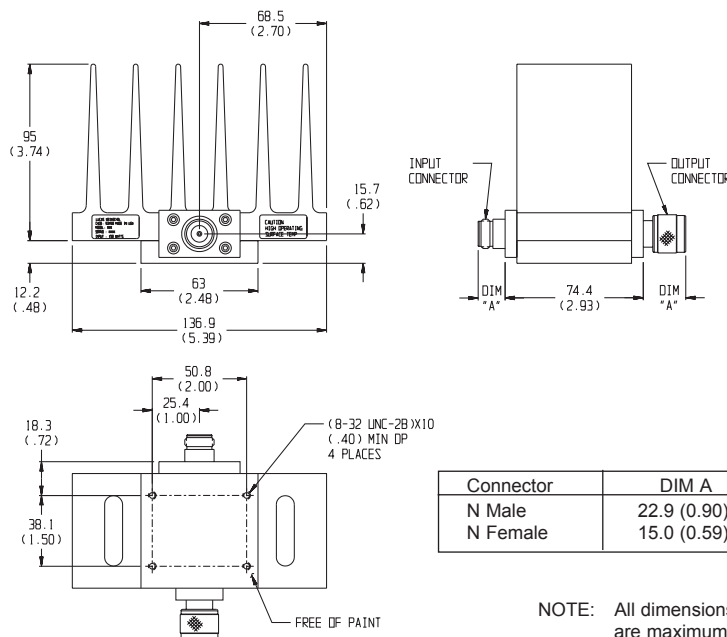
MAXIMUM DEVIATION OVER FREQUENCY:

Nominal ATTN (dB)	Deviation (dB)
3, 6, 10, 20, 30	± 1.00

MAXIMUM SWR:

Frequency (GHz)	SWR
dc - 2.5	1.20

PHYSICAL DIMENSIONS:



POWER RATING 150 watts **average (unidirectional)**, 10 kilowatts **peak** (5 μ sec pulse width; 0.5 % duty cycle) with case temperature held within **100 °C maximum** with appropriate convection cooling and/or conductive heat sink. Maximum power rating into output port is 20 watts average.

POWER COEFFICIENT: <0.0003 dB/dB/watt

TEMPERATURE COEFFICIENT: <0.0004 dB/dB/°C

TEMPERATURE RANGE: -55°C to 100°C (case temp.)

CALIBRATION: Insertion loss test data supplied at 0.05, 0.5, 1.0, 1.5, 2.0 and 2.5 GHz.

CONNECTORS: Type N connectors per MIL-STD-348 interface dimensions - mate nondestructively with MIL-C-39012 connectors.

Connector Options

Type/Description

3	Type N, Female
4	Type N, Male

CONSTRUCTION: Aluminum alloy body, stainless steel connectors; gold plated beryllium copper contacts.

WEIGHT: 850 g (1 lbs., 14 oz.) maximum

MODEL NUMBER DESCRIPTION:

Example:

65 - XX - XX

Basic
Model
Number

Attenuation
Value (dB)

Connector Options
1st digit is input side
2nd digit is output side

NOTE: All dimensions are given in mm (inches) and are maximum, unless otherwise specified.