

50MHz IF Filter

FOR IF FILTER OF MOBILE TELEPHONE

50MHz IF Filter

DESCRIPTION

- Applicable for 50 ~ 100MHz range
- Quartz type

FEATURES

1. SMD package insures small size, lightweight.
2. Adjustment free.
3. Low insertion loss and high stop band attenuation.
4. Wide and sharp passband characteristics.
5. High stability and reliability.
6. Designed for reflow solderings.

APPLICATION

- Mobile cellular telephone
- Portable cellular telephone
- Wireless equipment

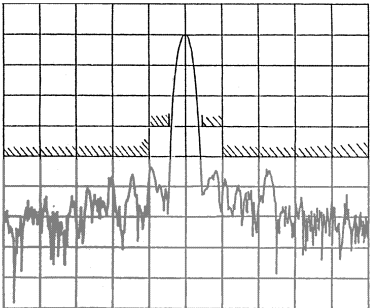
MAXIMUM RATINGS

Rating	Value	Unit
Operating Temperature Range	-20 to 75	°C
Storage Temperature Range	-30 to 85	°C

PRELIMINARY

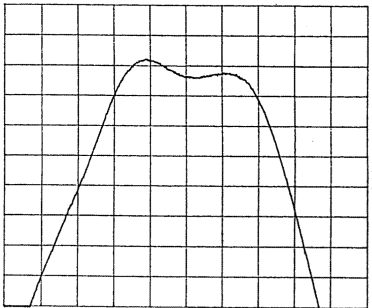
50MHz IF Filter TYPICAL CHARACTERISTICS

Insertion Loss vs. Frequency



Horizontal : 2MHz / Div
Vertical : 10dB / Div

Group Delay



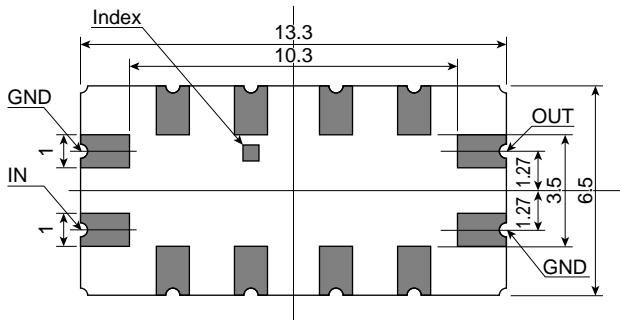
Horizontal : 80kHz / Div
Vertical : 0.5dB / Div

ELECTRICAL PERFORMANCE

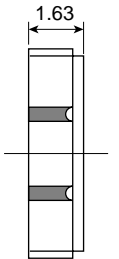
Parameter	Min	Typ	Max	Units
Center Frequency : f_0 *		50		MHz
1dB Bandwidth		0.4		MHz
3dB Bandwidth		0.55		MHz
STOPBAND ATTENUATION (Relative to Maximum Insertion Loss)				
10 MHz - f_0 -2.0 MHz		40		dB
f_0 -2.0 MHz - f_0 -0.9 MHz		30		dB
f_0 +0.9 MHz - f_0 +2.0 MHz		30		dB
f_0 +2.0 MHz - f_0 +4.5 MHz		35		dB
f_0 +4.5 MHz - f_0 -200 MHz		40		dB

* Center frequency is assigned as requested from 50 MHz to 100 MHz

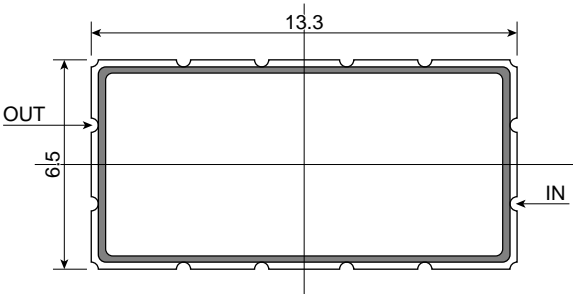
PACKAGE OUTLINE DIMENSIONS



BOTTOM VIEW



SIDE VIEW



TOP VIEW

DIMENSIONS ARE IN MILLIMETERS
±0.2 UNLESS OTHERWISE SPECIFIED