

# ADAPTERS, BETWEEN-SERIES

## TYPE N / SMA

DC - 18 GHz  
BULKHEAD MOUNT



MODELS: 5209, 5210, 5212 & 5213

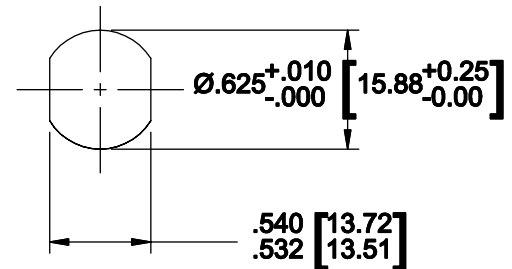
### SPECIFICATIONS:

#### Electrical:

Frequency Range \_\_\_\_\_ DC - 18.0 GHz  
VSWR \_\_\_\_\_ 1.20:1 Max.  
Impedance \_\_\_\_\_ 50 Ohms  
Temperature Range \_\_\_\_\_ -65°C to +125°C

#### Mechanical:

Connectors \_\_\_\_\_ Passivated Stainless Steel  
(Notes with MIL-STD-348)  
Conductors \_\_\_\_\_ Gold Plated Beryllium Copper  
Nut & Washer \_\_\_\_\_ Passivated Stainless Steel  
O-Ring \_\_\_\_\_ Silicone Rubber



Recommended Panel  
Configuration

Model Number: 5213

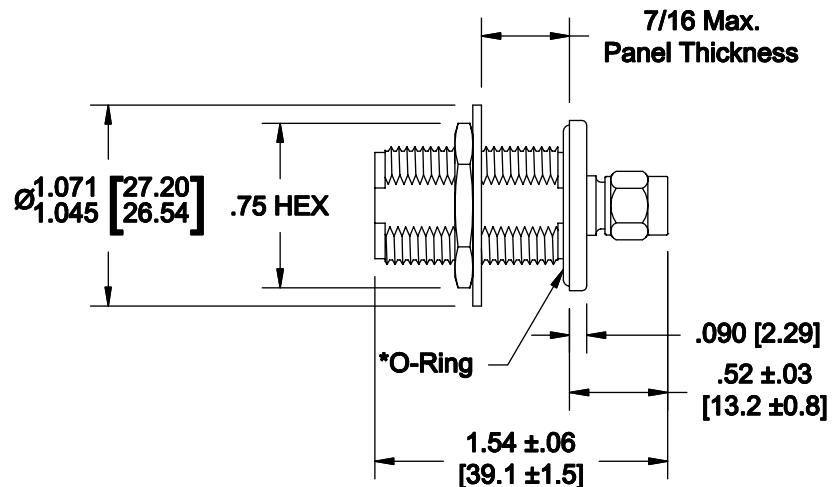
Type N Female / SMA Male

\*Includes O-Ring as Shown

Model Number: 5210

Type N Female / SMA Male

No O-Ring Included



Model Number: 5212

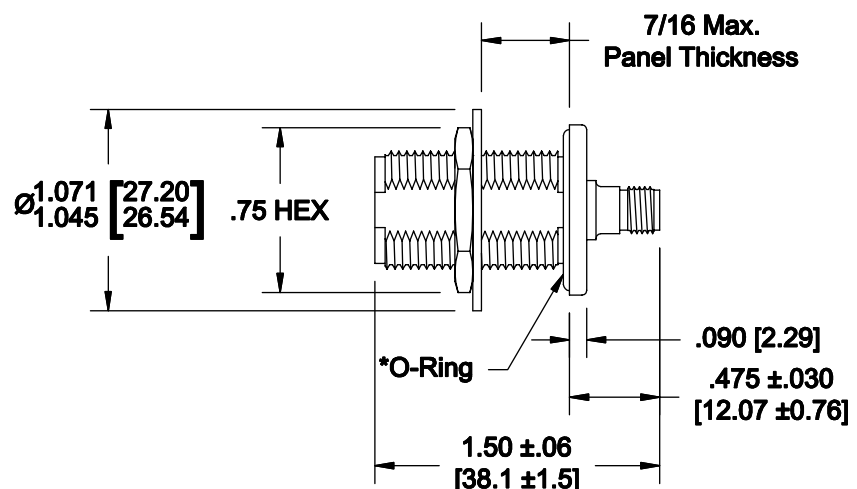
Type N Female / SMA Female

\*Includes O-Ring as Shown

Model Number: 5209

Type N Female / SMA Female

No O-Ring Included



Note: Dimensions in Brackets are Expressed in Millimeters and are for Reference Only.

5213; REV C