

ADAPTERS, BETWEEN SERIES

TYPE N / TNC

DC - 18 GHz
FLANGE MOUNT

MCE
INMET

MODELS: 5326, 5327, 5328 & 5329

SPECIFICATIONS:

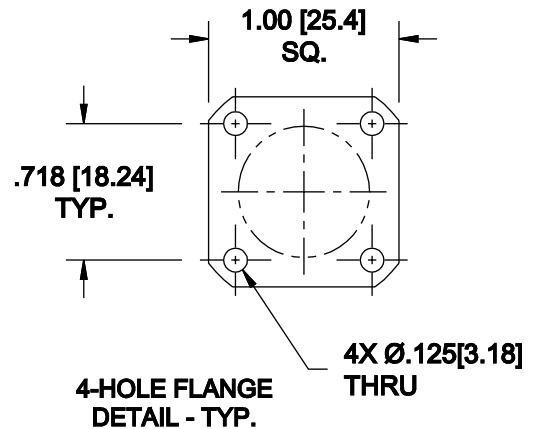
Electrical:

Frequency Range	DC - 18 GHz
Standard Freq. Values	6* & 18 GHz
VSWR	
DC - 4 GHz	1.04:1 Max.
4 - 8 GHz	1.07:1 Max.
8 - 18 GHz	1.12:1 Max.
Impedance	50 Ohms
Operating Temp Range	-65°C to +125°C

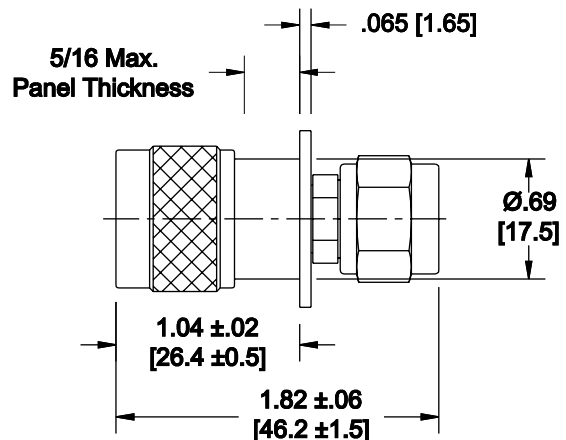
Mechanical:

Connectors	Passivated Stainless Steel
(Mates with MIL-STD-348)	
Conductors	Gold Plated Beryllium Copper

*For DC - 6 GHz Units add -067 to the Model Number

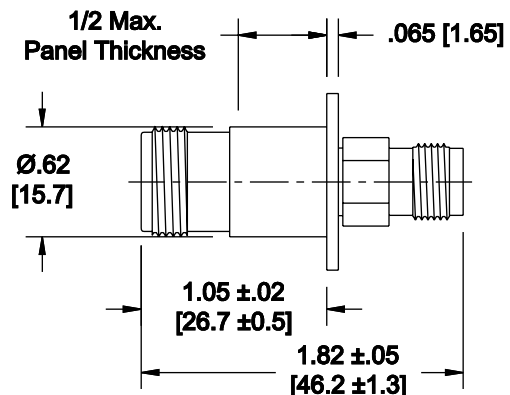


Model Number: **5326**
Type N Male / TNC Male
Length: 1.82 ±.06 [46.2 ±1.5]
As Pictured



Model Number: **5327**
Type N Male / TNC Female
Length: 1.80 ±.05 [45.7 ±1.3]
Not Shown

Model Number: **5328**
Type N Female / TNC Male
Length: 1.84 ±.05 [46.7 ±1.3]
Not Shown



Model Number: **5329**
Type N Female / TNC Female
Length: 1.82 ±.05 [46.2 ±1.3]
As Pictured

HOW TO ORDER:

Model Number: **532X-YYY**

Base Number

Frequency Range
= DC - 18 GHz
067 = DC - 6 GHz

Ordering Examples:

Model Number: **5329**
DC - 18 GHz; Type N Fem/TNC Fem

Model Number: **5326-067**
DC - 6 GHz; Type N Male/TNC Male

Note: Dimensions in Brackets are Expressed in Millimeters and are for Reference Only.
Type N Male connectors can be supplied with coupling nuts unattached to aid in installation.
Units featuring very low return loss (VSWR) are also available.

5326; REV A