

# ADAPTERS, BETWEEN SERIES

## TYPE N / SMA

up to 18 GHz  
FLANGE MOUNT



MODELS: 5306, 5307, 5308 & 5309

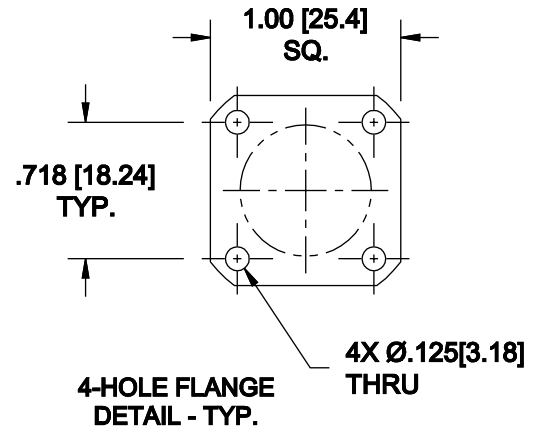
### SPECIFICATIONS:

#### Electrical:

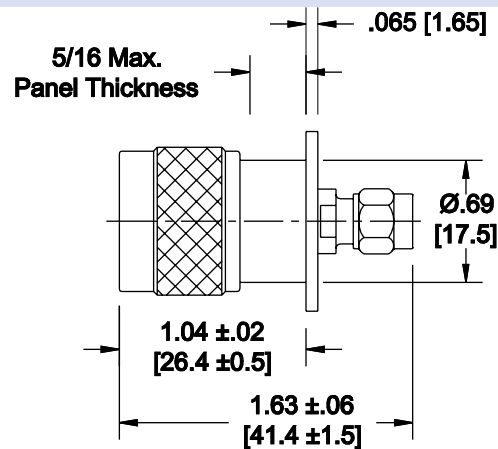
Frequency Range	DC - 18 GHz
Standard Freq. Values	6* & 18 GHz
VSWR	
DC - 4 GHz	1.04:1 Max.
4 - 8 GHz	1.07:1 Max.
8 - 18 GHz	1.12:1 Max.
Impedance	50 Ohms
Operating Temp Range	-65°C to +125°C

#### Mechanical:

Connectors	Passivated Stainless Steel
(Notes with MIL-STD-348)	
Conductors	Gold Plated Beryllium Copper
*For DC - 6 GHz Units add -067 to the Model Number	

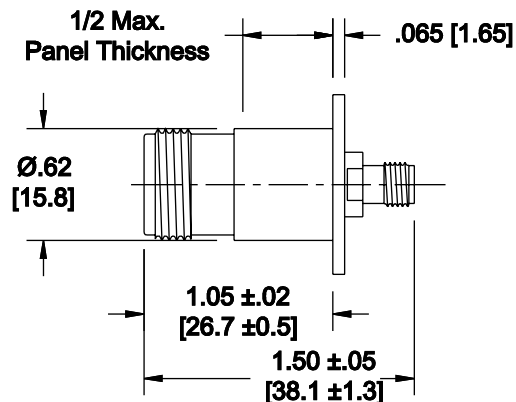


Model Number: **5306**  
Type N Male / SMA Male  
Length: 1.63 ±.06 [41.4 ±1.5]  
As Pictured



Model Number: **5308**  
Type N Male / SMA Female  
Length: 1.48 ±.05 [37.6 ±1.3]  
Not Shown

Model Number: **5307**  
Type N Female / SMA Male  
Length: 1.65 ±.05 [41.9 ±1.3]  
Not Shown



Model Number: **5309**  
Type N Female / SMA Female  
Length: 1.50 ±.05 [38.1 ±1.3]  
As Pictured

### HOW TO ORDER:

Model Number: **530X-YYY**

Base Number

Frequency Range  
= DC - 18 GHz  
067 = DC - 6 GHz

#### Ordering Examples:

Model Number: **5307**  
DC - 18 GHz; Type N Fem/SMA Male

Model Number: **5306-067**  
DC - 6 GHz; Type N Male/SMA Male

Note: Dimensions in Brackets are Expressed in Millimeters and are for Reference Only.  
Type N Male connectors can be supplied with coupling nuts unattached to aid in installation.  
Units featuring very low return loss (VSWR) are also available.

5306; REV A