

# ADAPTERS, BETWEEN SERIES

## TYPE N / SMA

DC - 18 GHz



MODELS: 5006, 5007, 5008, 5009

### SPECIFICATIONS:

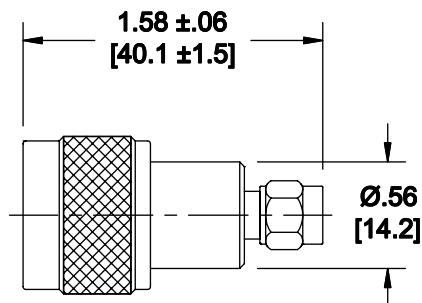
#### Electrical:

Frequency Range \_\_\_\_\_ DC - 18 GHz  
VSWR \_\_\_\_\_ 1.25:1 Max.  
Impedance \_\_\_\_\_ 50 Ohms  
Operating Temp. Range \_\_\_\_\_ -65°C to +125°C

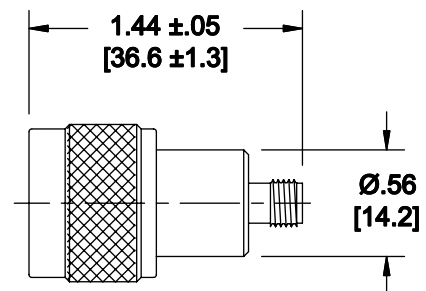
#### Mechanical:

Connectors \_\_\_\_\_ Passivated Stainless Steel  
Mates with MIL-STD-348  
Conductors \_\_\_\_\_ Gold Plated Beryllium Copper

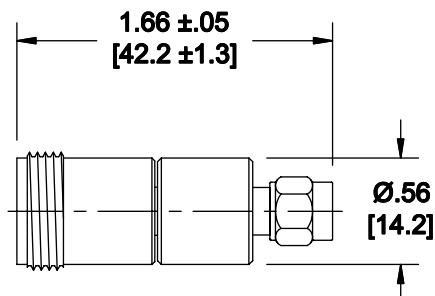
Model Number: **5006**  
Type N Male / SMA Male



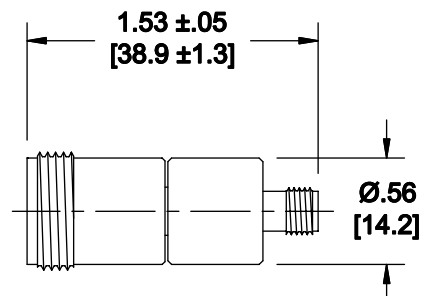
Model Number: **5009**  
Type N Male / SMA Female



Model Number: **5007**  
Type N Female / SMA Male



Model Number: **5008**  
Type N Female / SMA Female



Note: Dimensions in Brackets are Expressed in Millimeters and are for Reference Only.  
Units that offer very low return loss (VSWR) are also available.

5006; REV A