

ADAPTERS, IN-SERIES

TYPE N

DC - 18 GHz
STANDARD



MODELS: 5003, 5004 & 5005

SPECIFICATIONS:

Electrical:

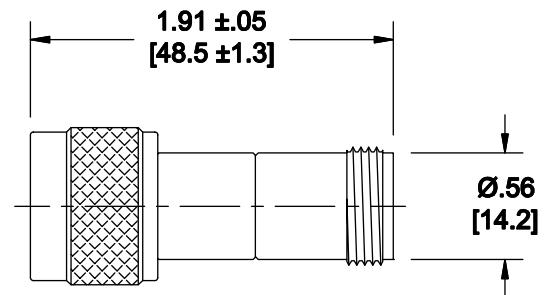
Frequency Range _____ DC - 18.0 GHz
VSWR _____ 1.25:1 Max.
Impedance _____ 50 Ohms
Operating Temp Range _____ -65°C to +125°C

Mechanical:

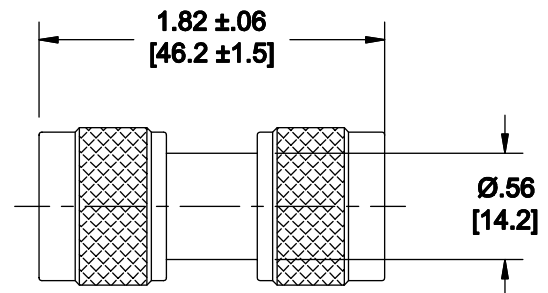
Connectors _____ Passivated Stainless Steel
(Mates with MIL-STD-348)

Conductors _____ Gold Plated Beryllium Copper

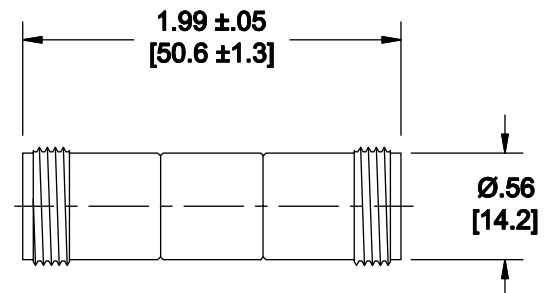
Model Number: 5005
Male/Female Connectors



Model Number: 5004
Male/Male Connectors



Model Number: 5003
Female/Female Connectors



Note: Dimensions in Brackets are Expressed in Millimeters and are for Reference Only.
Selected units featuring very low return loss (VSWR) are also available.

5005; REV A