

ADAPTERS, BETWEEN SERIES

SMA / GPO™

DC - 18 GHz



MODELS: 5190, 5191, 5192 & 5193

SPECIFICATIONS:

Electrical:

Frequency Range _____ DC - 18.0 GHz
VSWR _____ 1.20:1 Max.
Impedance _____ 50 Ohms
Operating Temp Range _____ -65°C to +125°C

Mechanical:

SMA Connectors _____ Passivated Stainless Steel
(Mates with MIL-STD-348)

GPO™ Connectors _____ Gold Plated Beryllium Copper
(GPO™ Connectors Mates with SMP Connectors IAW MIL-STD-348)

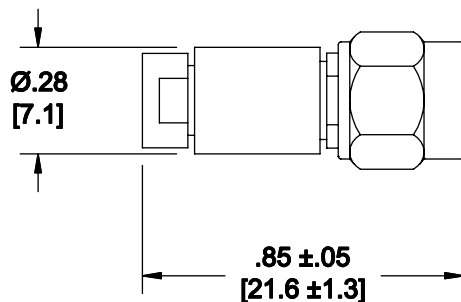
Conductors _____ Gold Plated Beryllium Copper

GPO™ is a trademark of Gilbert Engineering Co., Inc.

Model Number: 5190

GPO™ Male / SMA Male

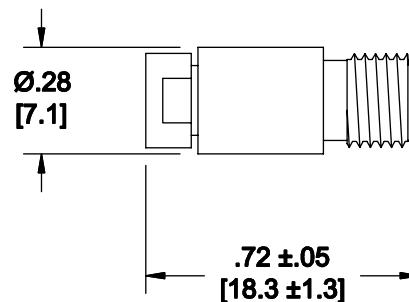
(GPO™ Male Connectors are limited detent)



Model Number: 5191

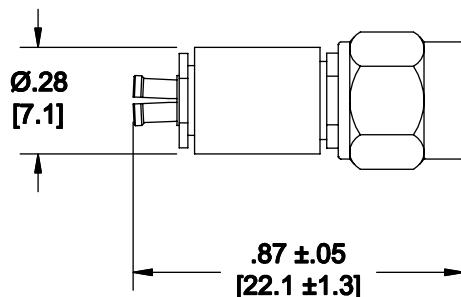
GPO™ Male / SMA Female

(GPO™ Male Connectors are limited detent)



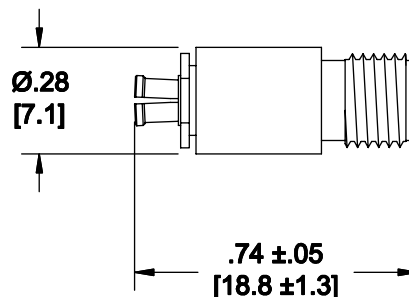
Model Number: 5192

GPO™ Female / SMA Male



Model Number: 5193

GPO™ Female / SMA Female



Note: Dimensions in Brackets are Expressed in Millimeters and are for Reference Only.

5190; REV B