

ADAPTERS, BETWEEN SERIES

TYPE N / BNC

up to 8 GHz
FLANGE MOUNT

inmet
CORPORATION
An MCE Company

MODELS: 5330, 5331, 5332 & 5333

SPECIFICATIONS:

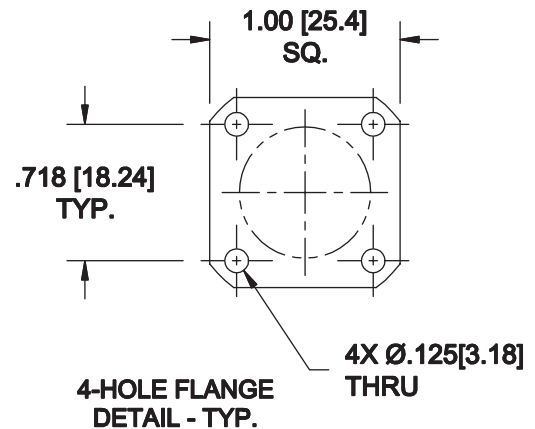
Electrical:

Frequency Range _____ DC - 8 GHz
Standard Freq. Values _____ 6* & 8 GHz
VSWR _____ 1.20:1 Max.
Impedance _____ 50 Ohms
Operating Temp Range _____ -65°C to +125°C

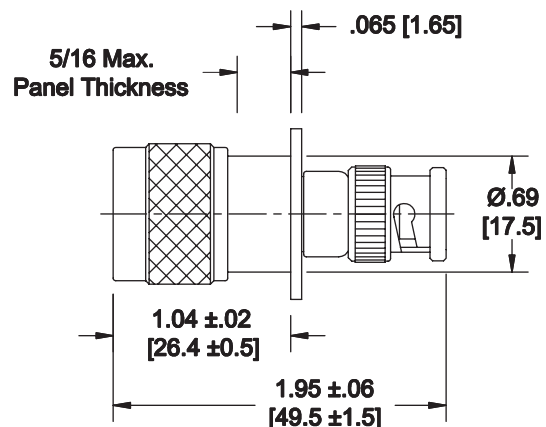
Mechanical:

BNC Connectors _____ Nickel Plated Brass
(Mates with MIL-STD-348)
Type N Connectors _____ Passivated Stainless Steel
(Mates with MIL-STD-348)
Conductors _____ Gold Plated Beryllium Copper

*For DC - 6 GHz Units add -067 to the Model Number

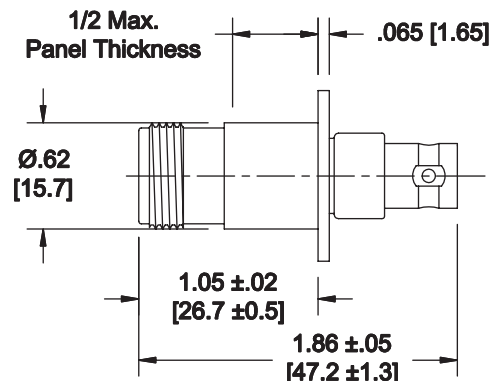


Model Number: **5330**
Type N Male / BNC Male
Length: 1.95 ±.06 [49.5 ±1.5]
As Pictured



Model Number: **5331**
Type N Male / BNC Female
Length: 1.83 ±.05 [46.5 ±1.3]
Not Shown

Model Number: **5332**
Type N Female / BNC Male
Length: 1.97 ±.05 [50.0 ±1.3]
Not Shown



Model Number: **5333**
Type N Female / BNC Female
Length: 1.86 ±.05 [47.2 ±1.3]
As Pictured

HOW TO ORDER:

Model Number: **533X-YYY**

Base Number _____

Frequency Range
= DC - 8 GHz
067 = DC - 6 GHz

Ordering Examples:

Model Number: **5333**
DC - 8 GHz; Type N Fem/BNC Fem

Model Number: **5330-067**
DC - 6 GHz; Type N Male/BNC Male

Note: Dimensions in Brackets are Expressed in Millimeters and are for Reference Only.
Type N Male connectors can be supplied with coupling nuts unattached to aid in installation.
Units featuring very low return loss (VSWR) are also available.

5330; REV B