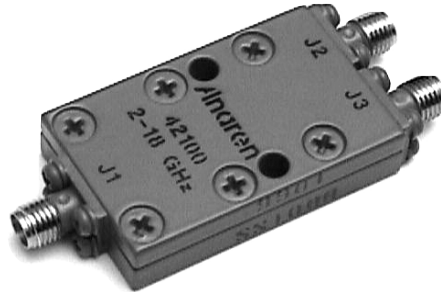


### Power Dividers 2-Way

#### Applications

- Phased Arrays
- Antenna Feed Networks
- Image Reject Mixers
- Test Systems
- LO Power Dividers



#### Features

- Military Grade
- 2-Way Power Split
- In-Phase
- Connectors Per MIL-C-39012
- Rugged Aluminum Housing
- Low VSWR

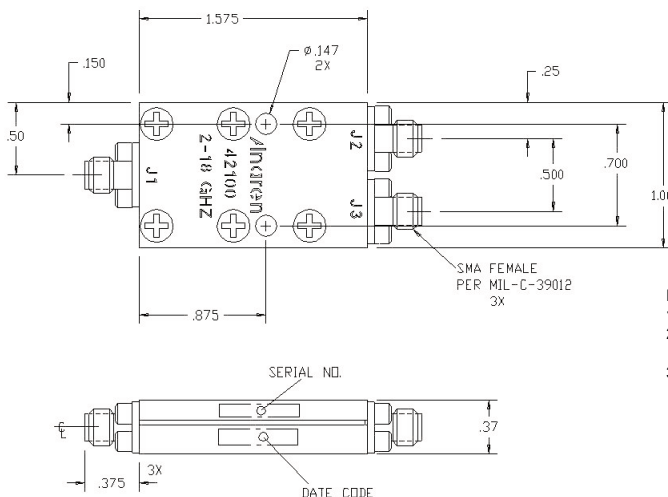
#### Electrical Specifications

	Frequency	Isolation	Insert. Loss	VSWR
	GHz	dB Min	dB Max	Max In/Out : 1
Split Specs	2.0 - 4.0	18	0.50	1.30/1.25
	4.0 - 8.0	18	0.80	1.33/1.33
	8.0 - 12.4	17	1.00	1.38/1.38
	12.4 - 18.0	16	1.50	1.50/1.40
	Amp. Bal.	Phase Bal.	Connector	Power
	dB Max	Degrees Max		Ave. cw Watts
Split Specs	0.40	5	SMA	10
	0.60	6	SMA	10
	0.70	7	SMA	10
	0.80	8	SMA	10

Notes: \*Input power with load VSWR of 1.20:1. Impedance: 50 ohms nominal. Meets MIL-E-5400 Class III requirements. Additional screening available for military and space applications.

Electrical and Mechanical Specifications subject to change without notice.

#### Outline Drawing



#### NOTES:

1. MARK AS SHOWN PER MIL-STD-130
2. FINISH:EPOXY PRIMER  
BLUE EPOXY PAINT
3. DIMENSIONS ARE IN INCHES