

Power Dividers 2-Way

Applications

- Phased Arrays
- Antenna Feed Networks
- Image Reject Mixers
- Test Systems
- LO Power Dividers



Features

- Military Grade
- 2-Way Power Split
- In-Phase
- Connectors Per MIL-C-39012
- Rugged Aluminum Housing
- Low VSWR

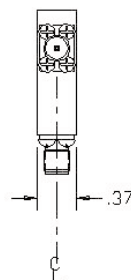
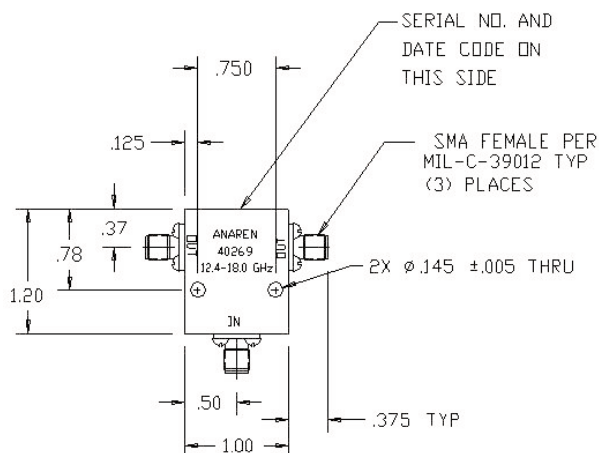
Electrical Specifications

Frequency GHz	Isolation dB Min	Insert. Loss dB Max	VSWR Max In/Out : 1
12.4 - 18.0	14	1.10	2.00/2.00
Amp. Bal. dB Max	Phase Bal. Degrees Max	Connector	Power Ave. CW Watts
0.50	10	SMA	10

Notes: *Input power with load VSWR of 1.20:1. Impedance: 50 ohms nominal. Meets MIL-E-5400 Class III requirements. Additional screening available for military and space applications.

Electrical and Mechanical Specifications subject to change without notice.

Outline Drawing



NOTES:

1. MARK PER MIL-STD-130
2. FINISH: PRIMER PAINT BLUE
3. APPROX. WEIGHT: 1 OZ. (28 GRAMS)
4. DIMENSIONS ARE IN INCHES AND (MM)