



## Models 19 & 1454 GPO™ Fixed Coaxial Attenuators & Terminations

dc to 18.0/26.5 GHz  
1 Watt

**SMP Connectors: Compatible with Gilbert GPO™**



### Features

- /// **Small & Lightweight**
- /// **Ideal for Airborne & Space Applications** - Qualified Designs Available.
- /// **Custom Designs** - Special Configurations such as models with an SMA connector on one end.

### Specifications

**NOMINAL IMPEDANCE:** 50 Ω

**FREQUENCY RANGE:** Model 19: dc to 18.0 GHz  
Model 1454: dc to 26.5 GHz

#### MAXIMUM DEVIATION OVER FREQUENCY:

Nominal ATTN (dB)	Deviation (dB)
1-12	±0.4
20	±0.7

#### MAXIMUM SWR\*:

Frequency (GHz)	19	1454
dc - 4	1.15	1.20
4 - 8	1.20	1.20
8 - 12.4	1.25	1.20
12.4 - 18.0	1.35	1.20
18.0 - 26.5	- - -	1.35

\*When mating SMP/GPO™ are optimally aligned and the gap between the connector reference planes is minimum.

**POWER RATING:** 1.0 watt **average** to 25°C ambient temperature, derated linearly to 0.1 watts @ 125°C. 250 watts **peak** maximum (5 μsec pulse width; 0.2% duty cycle).

**POWER COEFFICIENT:** < 0.005 dB/dB/watt

**TEMPERATURE COEFFICIENT:** < 0.0004 dB/dB/°C

**TEMPERATURE RANGE:** -55°C to +125°C.

**CALIBRATION:** Insertion Loss and SWR Testing performed across frequency range. Test data available at additional cost.

**CONNECTORS:** SMP male connectors per DESC specification 94007 - mate nondestructively with SMP female per DESC 94008 and Gilbert GPO™ series connectors. Options include smooth bore (-1), limited detent (-2), and full detent (-3).

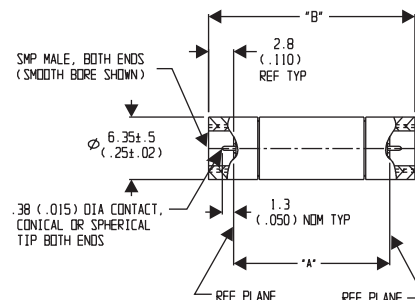
**NOTE:** GPO™ is a Trademark of Gilbert Engineering Co., Inc.

**CONSTRUCTION:** Aluminum body, stainless steel connectors and beryllium copper center conductors.

**WEIGHT:** 2.2 G (0.08 oz.) maximum

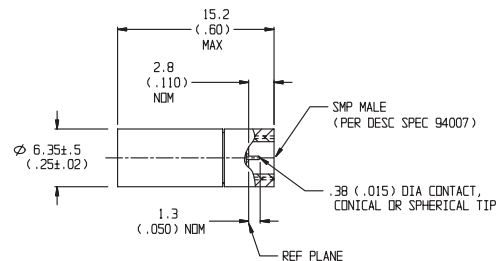
#### PHYSICAL DIMENSIONS:

**Model 19:**



dB VALUE	DIM "A" ±.13 (.005)	DIM "B" ±.5 (.02)
20	18.6 (.733)	24.1 (.95)
1-12	16.6 (.653)	22.1 (.87)

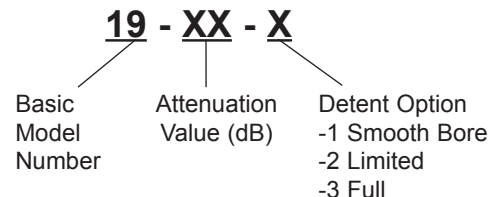
**Model 1454:**



**NOTE:** All dimensions are given in mm (inches) and are maximum, unless otherwise specified.

#### MODEL NUMBER DESCRIPTION:

**Fixed Attenuator (19) Example:**



**Termination (1454) Example:**

